

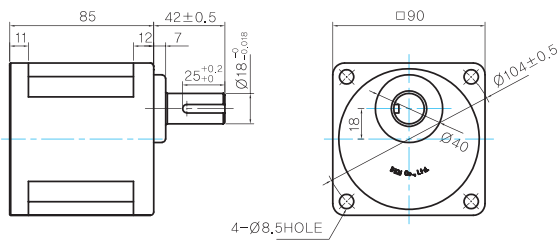
# D Gearbox

## 평행축 감속기

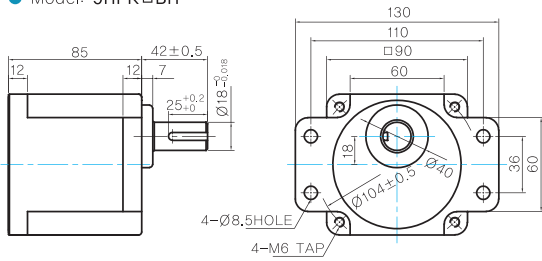
### H Type High Powerful Box / Flange Type Gearbox 초강력형 박스 / 날개타입 감속기

#### Dimensions

● Model: 9HBK□BH



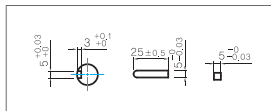
● Model: 9HFK□BH



● MOTOR OUTPUT SHAFT

MODEL	SPEC
KEY TYPE	

● KEY SPEC



● WEIGHT

Model	WEIGHT (Kg)
9HB(F)K3BH ~ 9HB(F)K10BH	1.59
9HB(F)K12.5BH ~ 9HB(F)K20BH	1.6
9HB(F)K25BH ~ 9HB(F)K60BH	1.7
9HB(F)K75BH ~ 9HB(F)K200BH	1.8

#### Gearbox Images

9HBK□BH



9HFK□BH



#### 9HBK□BH/9HFK□BH 최대허용토크

\* 인덕션 모터 부착시의 참고수치입니다.

Motor Output	감속비	3	3.6	5	6	7.5	9	10	12.5	15	18	20	25	30	36	40	50	60	75	90	100	120	150	180	200	r/min	
																										60Hz	50Hz
60W	60Hz	600	500	360	300	240	200	180	144	120	100	90	72	60	50	45	36	30	24	20	18	15	12	10	9	300.0	300.0
	50Hz	500	417	300	250	200	167	150	120	100	83	75	60	50	42	37.5	30	25	20	17	15	12.5	10	8	7.5	300.0	300.0
90W	60Hz	8.9	10.7	14.8	17.8	22.2	26.6	29.6	33.3	40.0	48.0	53.3	60.3	72.3	86.8	96.4	120.5	144.6	161.6	193.9	215.5	258.6	300.0	300.0	300.0	300.0	300.0
	50Hz	10.5	12.6	17.5	21.0	26.3	31.6	35.1	39.5	47.4	56.9	63.2	71.4	85.7	102.9	114.3	142.9	171.4	191.6	229.9	255.4	300.0	300.0	300.0	300.0	300.0	
120W	60Hz	13.3	16.0	22.2	26.6	33.3	39.9	44.4	50.0	60.0	72.0	80.0	90.4	108.5	130.2	144.6	180.8	217.0	242.4	290.9	300.0	300.0	300.0	300.0	300.0	300.0	
	50Hz	15.8	18.9	26.3	31.6	39.4	47.3	52.6	59.3	71.1	85.3	94.8	107.1	128.6	154.3	171.4	214.3	257.1	287.3	300.0	300.0	300.0	300.0	300.0	300.0	300.0	
150W	60Hz	17.8	21.3	29.6	35.5	44.4	53.3	59.2	66.7	80.0	96.0	106.7	120.5	144.6	173.6	192.9	241.1	289.3	300.0	300.0	300.0	300.0	300.0	300.0	300.0	300.0	
	50Hz	21.0	25.2	35.1	42.1	52.6	63.1	70.1	79.0	94.8	113.8	126.4	142.9	171.4	205.7	228.6	285.7	300.0	300.0	300.0	300.0	300.0	300.0	300.0	300.0	300.0	
180W	60Hz	22.9	27.5	38.2	45.8	57.3	68.7	76.3	86.0	103.2	123.9	137.6	155.5	186.6	224.0	248.8	300.0	300.0	300.0	300.0	300.0	300.0	300.0	300.0	300.0	300.0	
	50Hz	27.3	32.8	45.5	54.6	68.3	81.9	91.0	102.6	123.1	147.7	164.1	185.4	222.5	267.0	296.7	300.0	300.0	300.0	300.0	300.0	300.0	300.0	300.0	300.0	300.0	
200W	60Hz	26.6	32.0	44.4	53.3	66.6	79.9	88.8	100.0	120.0	144.0	160.0	180.8	217.0	260.4	289.3	300.0	300.0	300.0	300.0	300.0	300.0	300.0	300.0	300.0	300.0	
	50Hz	32.8	39.3	54.6	65.5	81.9	98.3	109.2	123.1	147.7	177.2	196.9	222.5	267.0	300.0	300.0	300.0	300.0	300.0	300.0	300.0	300.0	300.0	300.0	300.0	300.0	

- 1) 감속기 모델명 □ 안에는 감속비가 들어갑니다.
- 2) 위의 표에서 색칠된 범위의 감속비를 선택했을 때 감속기의 출력축은 모터의 출력축과 같은 방향으로 회전합니다. 흰색 바탕 범위의 감속비에서는 감속기 출력축은 모터 출력축의 회전방향과 반대방향으로 회전합니다.
- 3) 회전속도(r/min)는 모터의 동기회전속도(50Hz:1500r/min, 60Hz:1800r/min)를 감속비로 나누어 계산합니다. 실제 회전속도는 부하의 크기에 따라 표시보다 2~20% 정도 느립니다.
- 4) N.m의 값은 kgfcm 값에 0.098을 곱하여 구합니다.