

180W

Speed Control
Brake Motor
180W (□90mm)

Motor Specification

Model 9SBDG*-180F2□: Gear Type Shaft 9SBD*-180F2: D-Cut Type Shaft 9SBDK*-180F2: Key Type Shaft	Output W	Voltage V	Frequency Hz	Poles	Duty	Speed Range r/min	Starting Torque kgfcm N.m		Permissible Torque				Capacitor μF / VAC
									1200r/min		90r/min		
									kgfcm	N.m	kgfcm	N.m	
9SBDGD-180F2□	180	1∅220	60	4	30min.	90-1700	8.40	0.840	10.00	1.000	6.60	0.660	8.0 / 400
9SBDGE-180F2□	180	1∅220	50	4	30min.	90-1400	6.20	0.620	10.00	1.000	6.60	0.660	8.0 / 400
		1∅240					7.10	0.710	12.00	1.200	7.50	0.750	

- 1) Enter the phase & voltage code in the place * and enter the model type of attaching Gearbox in the box (□) within the motor model name.
- 2) All models contain a built-in thermal protector.
- 3) Gear Type Shaft are for attaching Gearbox and D-Cut & Key Type Shaft are for using motor only.

Max. Permissible Torque at Output Shaft of Gearbox

Motor Model	Gearbox Model	r/min	V	Hz	Gear Ratio	3	3.6	6	9	12.5	15	18	20	25
9SBDG□ -180F2H	9HBK□BH 9HFK□BH	1200	220	60	kgfcm N.m	24.9 2.44	29.9 2.93	49.8 4.88	74.7 7.32	93.8 9.19	112.5 11.03	135.0 13.23	136.0 13.33	170.0 16.66
			220/ 240	50	kgfcm N.m	29.9 2.93	35.9 3.51	59.8 5.86	89.6 8.78	124.5 12.20	149.4 14.64	179.3 17.57	199.2 19.52	249.0 24.40
		90	220	60	kgfcm N.m	16.4 1.61	19.7 1.93	32.9 3.22	49.3 4.83	61.9 6.06	74.3 7.28	89.1 8.73	89.8 8.80	112.2 11.00
			220/ 240	50	kgfcm N.m	18.7 1.83	22.4 2.20	37.4 3.66	56.0 5.49	70.3 6.89	84.4 8.27	101.3 9.92	102.0 10.00	127.5 12.50

Motor Model	Gearbox Model	r/min	V	Hz	Gear Ratio	30	36	50	60	75	90	100	120	150	180	200		
9SBDG□ -180F2H	9HBK□BH 9HFK□BH	1200	220	60	kgfcm N.m	204.0 19.99	244.8 23.99	300.0 29.40	300.0 29.40	300.0 29.40	300.0 29.40	300.0 29.40	300.0 29.40	300.0 29.40	300.0 29.40	300.0 29.40	300.0 29.40	
			220/ 240	50	kgfcm N.m	298.8 29.28	300.0 29.40	300.0 29.40	300.0 29.40	300.0 29.40	300.0 29.40	300.0 29.40	300.0 29.40	300.0 29.40	300.0 29.40	300.0 29.40	300.0 29.40	300.0 29.40
		90	220	60	kgfcm N.m	134.6 13.19	161.6 15.83	224.4 21.99	269.3 26.39	300.0 29.40	300.0 29.40	300.0 29.40	300.0 29.40	300.0 29.40	300.0 29.40	300.0 29.40	300.0 29.40	300.0 29.40
			220/ 240	50	kgfcm N.m	153.0 14.99	183.6 17.99	255.0 24.99	300.0 29.40	300.0 29.40	300.0 29.40	300.0 29.40	300.0 29.40	300.0 29.40	300.0 29.40	300.0 29.40	300.0 29.40	300.0 29.40

Motor Model	Gearbox Model	r/min	V	Hz	Gear Ratio	7.5	10	15	20	25	30	40	50	60	80
9SBDG□ -180F2WH	9WHD□-030 9WHD□-040	1200	220	60	kgfcm N.m	63.0 6.17	81.0 7.94	114.0 11.17	144.0 14.11	165.0 16.17	192.0 18.82	183.7 18.00	173.5 17.00	163.3 16.00	132.7 13.00
			220/240	50	kgfcm N.m	75.6 7.41	97.2 9.53	136.8 13.41	172.8 16.93	198.0 19.40	204.1 20.00	183.7 18.00	173.5 17.00	163.3 16.00	132.7 13.00
		90	220	60	kgfcm N.m	41.6 4.07	53.5 5.24	75.2 7.37	95.0 9.31	108.9 10.67	126.7 12.42	155.8 15.26	173.5 17.00	163.3 16.00	132.7 13.00
			220/240	50	kgfcm N.m	47.3 4.63	60.8 5.95	85.5 8.38	108.0 10.58	123.8 12.13	144.0 14.11	177.0 17.35	173.5 17.00	163.3 16.00	132.7 13.00

- 1) Enter the phase & voltage code in the box (□) within the motor model name.
- 2) Enter the gear ratio in the box (□) within the Gearbox model name.
- 3) A colored background indicates gear shaft rotation in the same direction as the motor shaft; a white background indicates rotation in the opposite direction.
- 4) The rotating speed is calculated by dividing the motor's synchronous speed (50Hz: 1,500r/min, 60Hz: 1,800r/min) by the gear ratio.
The actual speed is 2-20% less than the displayed value, depending on the size of the load.

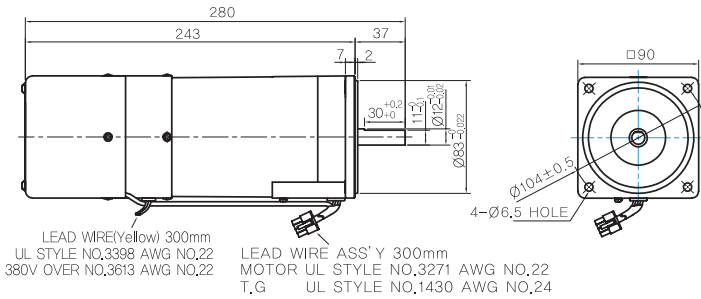
B AC Motors

S.C. Brake Motor 180W (□90mm)

Dimensions

MOTOR ONLY

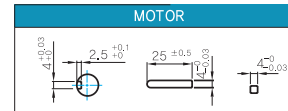
- MOTOR MODEL:
9SBDD□-180F2 (POWERFUL FAN)



MOTOR OUTPUT SHAFT

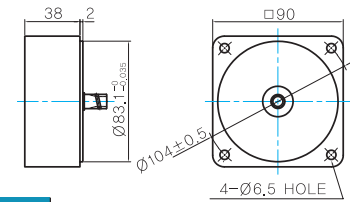
MODEL	SPEC
D-CUT TYPE	
9SBDD□-180F2	
KEY TYPE	
9SBDK□-180F2	

KEY SPEC



INTER-DECIMAL GEARBOX

- MODEL: 9XD10□□

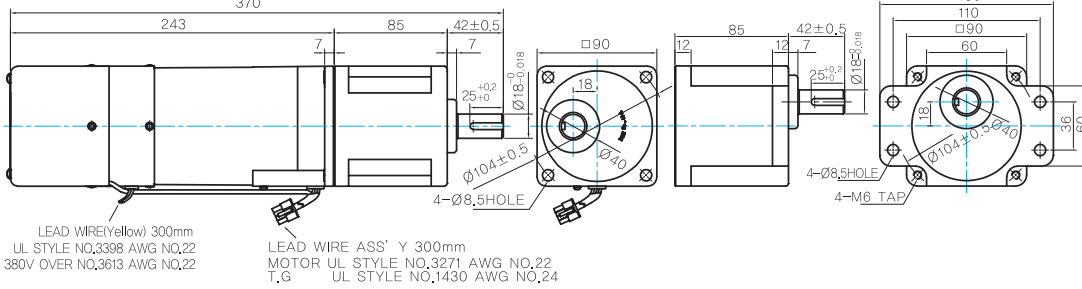


GEARED MOTOR

H TYPE GEARBOX

- MOTOR MODEL:
9SBDG□-180F2H (POWERFUL FAN)

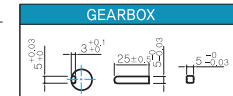
- GEARBOX MODEL:
9HBK□BH
- GEARBOX MODEL:
9HFK□BH



GEARBOX OUTPUT SHAFT

MODEL	SPEC
KEY TYPE	
9HBK□BH	
9HFK□BH	

KEY SPEC

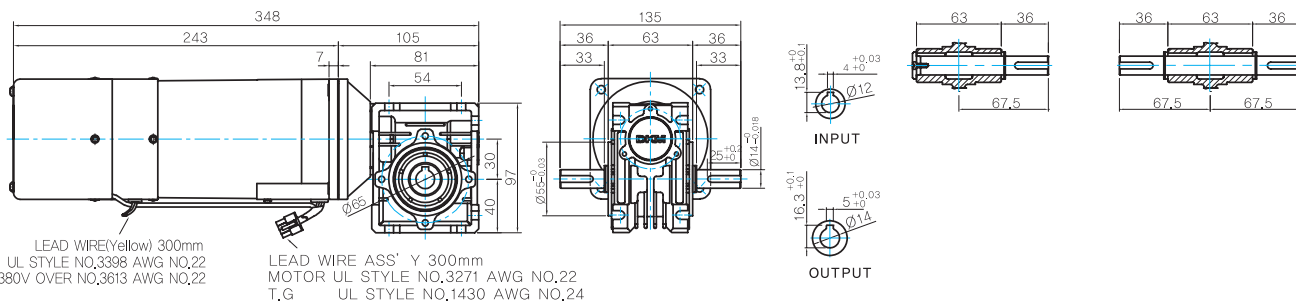


WH TYPE GEARBOX

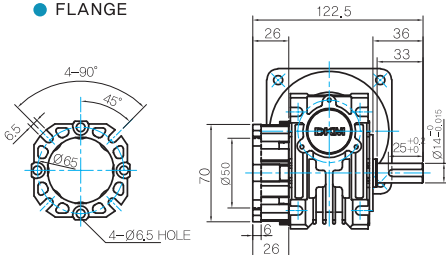
- MOTOR MODEL:
9SBDG□-180F2WH (POWERFUL FAN)

- GEARBOX MODEL:
9WHD□-030

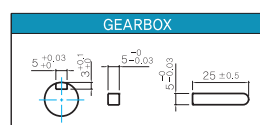
- SHAFT(Unidirectional, Bi-directional)



FLANGE

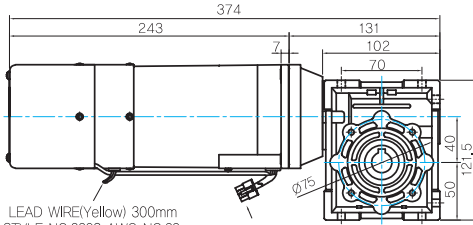


KEY SPEC



* The output flange and shafts are sold separately.

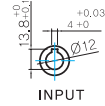
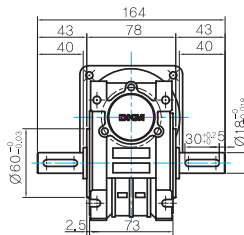
● MOTOR MODEL:
9WHD□-180F2WH (POWERFUL FAN)



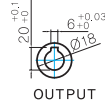
LEAD WIRE(Yellow) 300mm
UL STYLE NO.3398 AWG NO.22
380V OVER NO.3613 AWG NO.22

LEAD WIRE ASS' Y 300mm
MOTOR UL STYLE NO.3271 AWG NO.22
T,G UL STYLE NO.1430 AWG NO.24

● GEARBOX MODEL:
9WHD□-040

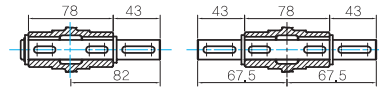


INPUT



OUTPUT

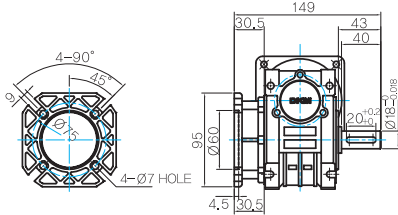
● SHAFT(Unidirectional, Bi-directional)



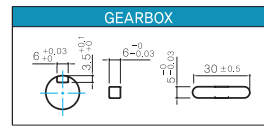
● WEIGHT

PART		WEIGHT(Kg)
MOTOR		3,8
GEAR BOX	9PB(F)K2BH ~ 9PB(F)K18BH	1,3
	9PB(F)K20BH ~ 9PB(F)K200BH	1,4
	9HB(F)K3BH ~ 9HB(F)K9BH	1,45
	9HB(F)K12.5BH ~ 9HB(F)K18BH	1,5
	9HB(F)K20BH ~ 9HB(F)K60BH	1,7
	9HB(F)K75BH ~ 9HB(F)K200BH	1,8
	9WD□BL/BB/BRL	1,0
	9WHD□-030	1,13
	9WHD□-040	2,2
	9XD10□□	0,5

● FLANGE



● KEY SPEC



* The output flange and shafts are sold separately.

Motor Images

