

60W

Speed Control
Brake Motor
60W(□90mm)

Motor Specification

Model 9SBDG ⁺ -60F2□: Gear Type Shaft 9SBD ⁺ -60F2: D-Cut Type Shaft 9SBDK ⁺ -60F2: Key Type Shaft	Output W	Voltage V	Frequency Hz	Poles	Duty	Speed Range r/min	Starting Torque kgfcm N.m		Permissible Torque				Capacitor μF / VAC
									1200r/min		90r/min		
									kgfcm	N.m	kgfcm	N.m	
9SBDGA-60F2□	60	1∅110	60	4	30min.	90-1700	3.20	0.320	6.10	0.610	2.80	0.280	20.0 / 250
9SBDGD-60F2□	60	1∅220	60	4	30min.	90-1700	3.80	0.380	6.50	0.650	3.00	0.300	5.0 / 400
9SBDGE-60F2□	60	1∅220	50	4	30min.	90-1400	5.20	0.520	5.20	0.520	1.00	0.100	5.0 / 400
		1∅240					5.80	0.580	5.80	0.580	1.00	0.100	

1) Enter the phase & voltage code in the place * and enter the model type of attaching Gearbox in the box (□) within the motor model name.

2) All models contain a built-in thermal protector.

3) Gear Type Shaft are for attaching Gearbox and D-Cut & Key Type Shaft are for using motor only.

Max. Permissible Torque at Output Shaft of Gearbox

Motor Model	Gearbox Model	r/min	V	Hz	Gear Ratio	2	3	3.6	5	6	7.5	9	12.5	15	18	20
9SBDG□ -60F2P	9PBK□BH 9PFK□BH	1200	110	60	kgfcm N.m	10.1 0.99	15.2 1.49	18.2 1.79	25.3 2.48	30.4 2.98	38.0 3.72	45.6 4.47	57.2 5.60	68.6 6.73	82.4 8.07	83.0 8.13
			220	60	kgfcm N.m	10.8 1.06	16.2 1.59	19.4 1.90	27.0 2.64	32.4 3.17	40.5 3.97	48.6 4.76	60.9 5.97	73.1 7.17	87.8 8.60	88.4 8.66
			220/ 240	50	kgfcm N.m	9.6 0.94	14.4 1.42	17.3 1.70	24.1 2.36	28.9 2.83	36.1 3.54	43.3 4.25	54.4 5.33	65.3 6.39	78.3 7.67	78.9 7.73
		90	110	60	kgfcm N.m	4.6 0.46	7.0 0.68	8.4 0.82	11.6 1.14	13.9 1.37	17.4 1.71	20.9 2.05	26.3 2.57	31.5 3.09	37.8 3.70	38.1 3.73
			220	60	kgfcm N.m	5.0 0.49	7.5 0.73	9.0 0.88	12.5 1.22	14.9 1.46	18.7 1.83	22.4 2.20	28.1 2.76	33.8 3.31	40.5 3.97	40.8 4.00
			220/ 240	50	kgfcm N.m	1.7 0.16	2.5 0.24	3.0 0.29	4.2 0.41	5.0 0.49	6.2 0.61	7.5 0.73	9.4 0.92	11.3 1.10	13.5 1.32	13.6 1.33

Motor Model	Gearbox Model	r/min	V	Hz	Gear Ratio	25	30	36	40	50	60	75	90	100	120	150	180	200
9SBDG□ -60F2P	9PBK□BH 9PFK□BH	1200	110	60	kgfcm N.m	103.7 10.16	124.4 12.20	149.3 14.63	165.9 16.26	200.0 19.60	200.0 19.60	200.0 19.60	200.0 19.60	200.0 19.60	200.0 19.60	200.0 19.60	200.0 19.60	200.0 19.60
			220	60	kgfcm N.m	110.5 10.83	132.6 12.99	159.1 15.59	176.8 17.33	200.0 19.60	200.0 19.60	200.0 19.60	200.0 19.60	200.0 19.60	200.0 19.60	200.0 19.60	200.0 19.60	200.0 19.60
			220/ 240	50	kgfcm N.m	98.6 9.66	118.3 11.60	142.0 13.91	157.8 15.46	197.2 19.33	200.0 19.60	200.0 19.60	200.0 19.60	200.0 19.60	200.0 19.60	200.0 19.60	200.0 19.60	200.0 19.60
		90	110	60	kgfcm N.m	47.6 4.66	57.1 5.60	68.5 6.72	76.2 7.46	95.2 9.33	114.2 11.20	128.1 12.55	153.7 15.06	170.8 16.74	200.0 19.60	200.0 19.60	200.0 19.60	200.0 19.60
			220	60	kgfcm N.m	51.0 5.00	61.2 6.00	73.4 7.20	81.6 8.00	102.0 10.00	122.4 12.00	137.3 13.45	164.7 16.14	183.0 17.93	200.0 19.60	200.0 19.60	200.0 19.60	200.0 19.60
			220/ 240	50	kgfcm N.m	17.0 1.67	20.4 2.00	24.5 2.40	27.2 2.67	34.0 3.33	40.8 4.00	45.8 4.48	54.9 5.38	61.0 5.98	73.2 7.17	91.5 8.97	109.8 10.76	109.8 10.76

GEARED MOTOR

● P TYPE GEARBOX

- MOTOR MODEL: 9SBDG□-60F2P (POWERFUL FAN)
- GEARBOX MODEL: 9PBK□BH
- GEARBOX MODEL: 9PFK□BH
- GEARBOX OUTPUT SHAFT
- KEY SPEC

LEAD WIRE(Yellow) 300mm
UL STYLE NO,3398 AWG NO,22
380V OVER NO,3613 AWG NO,22

LEAD WIRE ASS'Y 300mm
MOTOR UL STYLE NO,3271 AWG NO,22
T,G UL STYLE NO,1430 AWG NO,24

MODEL	SPEC
KEY TYPE	38 25 ^{+0.2} □90 110 60 60
9PBK□BH	
9PFK□BH	

GEARBOX	
5 ^{+0.03}	3 ^{+0.1}
25±0.5	5 ^{-0.03}

● H TYPE GEARBOX

- MOTOR MODEL: 9SBDG□-60F2H (POWERFUL FAN)
- GEARBOX MODEL: 9HBK□BH
- GEARBOX MODEL: 9HFK□BH
- GEARBOX OUTPUT SHAFT
- KEY SPEC

LEAD WIRE(Yellow) 300mm
UL STYLE NO,3398 AWG NO,22
380V OVER NO,3613 AWG NO,22

LEAD WIRE ASS'Y 300mm
MOTOR UL STYLE NO,3271 AWG NO,22
T,G UL STYLE NO,1430 AWG NO,24

MODEL	SPEC
KEY TYPE	42 25 ^{+0.2} □90 110 60 60
9HBK□BH	
9HFK□BH	

GEARBOX	
5 ^{+0.03}	3 ^{+0.1}
25±0.5	5 ^{-0.03}

● W TYPE GEARBOX

- MOTOR MODEL: 9SBDG□-60F2W (POWERFUL FAN)
- GEARBOX MODEL: 9WD□BL/BR/BRL
- KEY SPEC

LEAD WIRE(Yellow) 300mm
UL STYLE NO,3398 AWG NO,22
380V OVER NO,3613 AWG NO,22

LEAD WIRE ASS'Y 300mm
MOTOR UL STYLE NO,3271 AWG NO,22
T,G UL STYLE NO,1430 AWG NO,24

GEARBOX	
5 ^{+0.03}	3 ^{+0.1}
5 ^{-0.03}	25±0.5

● WH TYPE GEARBOX

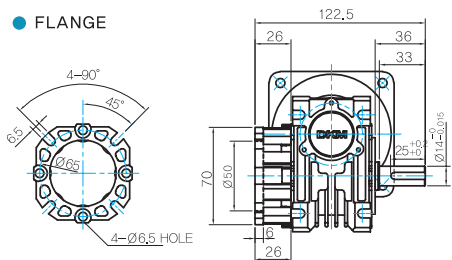
- MOTOR MODEL: 9SBDG□-60F2WH (POWERFUL FAN)
- GEARBOX MODEL: 9WHD□-030
- SHAFT(Unidirectional, Bi-directional)
- KEY SPEC

LEAD WIRE(Yellow) 300mm
UL STYLE NO,3398 AWG NO,22
380V OVER NO,3613 AWG NO,22

LEAD WIRE ASS'Y 300mm
MOTOR UL STYLE NO,3271 AWG NO,22
T,G UL STYLE NO,1430 AWG NO,24

GEARBOX	
5 ^{+0.03}	3 ^{+0.1}
5 ^{-0.03}	25±0.5

● FLANGE



● KEY SPEC

GEARBOX	
5 ^{+0.03}	3 ^{+0.1}
5 ^{-0.03}	25±0.5

* The output flange and shafts are sold separately.



● WEIGHT

PART	WEIGHT(Kg)	
MOTOR	2.7	
GEAR BOX	9PB(F)K2BH ~ 9PB(F)K18BH	1.3
	9PB(F)K20BH ~ 9PB(F)K200BH	1.4
	9HB(F)K3BH ~ 9HB(F)K9BH	1.45
	9HB(F)K12.5BH ~ 9HB(F)K18BH	1.5
	9HB(F)K20BH ~ 9HB(F)K60BH	1.7
	9HB(F)K75BH ~ 9HB(F)K200BH	1.8
	9WD□BL/BR/BRL	1.0
	9WHD□-030	1.13
9XD10□	0.5	

B AC Motors

S.C. Brake Motor 60W (□90mm)

Motor Images

9SBDD□-60F2	9SBDG□-60F2P+9PBK□BH	9SBDG□-60F2P+9PFK□BH	9SBDG□-60F2H+9HBK□BH	9SBDG□-60F2H+9HFK□BH	9SBDG□-60F2W+9WD□BL
					
9SBDG□-60F2WH+9WHD□-030					
					