

S.C. Brake Motor 60W (□ 90mm)

60W

Speed Control Brake Motor
60W(□ 90mm)

Motor 사양

Model 9SBDG*~60F2□ : Gear Type Shaft 9SBDG*~60F2□ : D-Cut Type Shaft 9SBDK*~60F2□ : Key Type Shaft	Output W	Voltage V	Frequency Hz	Poles	Duty	Speed Range r/min	Starting Torque		Permissible Torque				Capacitor μF / VAC	
							kgfcm	N.m	1200r/min		90r/min			
									kgfcm	N.m	kgfcm	N.m		
Lead Wire Type														
9SBDG1(A)-60F2□	60	1φ110	60	4	30min.	90-1700	5.00	0.500	5.40	0.540	2.80	0.280	20.0 / 250	
9SBDG2(D)-60F2□	60	1φ220	60	4	30min.	90-1700	5.00	0.500	5.30	0.530	2.70	0.270	6.0 / 450	
9SBDGE-60F2□	60	1φ220	50	4	30min.	90-1400	5.00	0.500	5.20	0.520	2.70	0.270	6.0 / 450	
		1φ240					5.50	0.550	5.80	0.580	2.90	0.290		

- 1) 모터 모델명 * 자리에는 전압코드가, □ 안에는 부착되는 감속기의 모델 타입명이 들어갑니다.
- 2) 전압코드 A, D, E는 TP(Thermal Protector) 부착 사양입니다.
- 3) Gear Type Shaft는 감속기 부착용이며 D-Cut 및 Key Type Shaft는 모터 단독 사용시의 출력축입니다.

감속기 부착 시 최대허용토크

Motor Model	Gearbox Model	회전속도 r/min	전압 V	주파수 Hz	감속비	2	3	3.6	5	6	7.5	9	10	12.5	15	18	20	25
9SBDG*~60F2P	9PBK □ BH 9PFK □ BH	1200	110	60	kgfcm	8.7	13.1	15.7	21.9	26.2	32.8	39.4	43.7	49.3	59.1	71.0	78.8	89.1
					N.m	0.86	1.29	1.54	2.14	2.57	3.21	3.86	4.29	4.83	5.79	6.95	7.73	8.73
					kgfcm	8.6	12.9	15.5	21.5	25.8	32.2	38.6	42.9	48.4	58.0	69.6	77.4	87.5
		N.m			0.84	1.26	1.51	2.10	2.52	3.16	3.79	4.21	4.74	5.69	6.82	7.58	8.57	
		kgfcm			8.4	12.6	15.2	21.1	25.3	31.6	37.9	42.1	47.5	56.9	68.3	75.9	85.8	
		N.m			0.83	1.24	1.49	2.06	2.48	3.10	3.71	4.13	4.65	5.58	6.70	7.44	8.41	
	90	110	60	kgfcm	4.5	6.8	8.2	11.3	13.6	17.0	20.4	22.7	25.6	30.7	36.8	40.9	46.2	
				N.m	0.44	0.67	0.80	1.11	1.33	1.67	2.00	2.22	2.50	3.00	3.61	4.01	4.53	
				kgfcm	4.4	6.6	7.9	10.9	13.1	16.4	19.7	21.9	24.6	29.6	35.5	39.4	44.6	
		N.m	0.43	0.64	0.77	1.07	1.29	1.61	1.93	2.14	2.41	2.90	3.48	3.86	4.37			
		kgfcm	4.4	6.6	7.9	10.9	13.1	16.4	19.7	21.9	24.6	29.6	35.5	39.4	44.6			
		N.m	0.43	0.64	0.77	1.07	1.29	1.61	1.93	2.14	2.41	2.90	3.48	3.86	4.37			

Motor Model	Gearbox Model	회전속도 r/min	전압 V	주파수 Hz	감속비	30	36	40	50	60	75	90	100	120	150	180	200
9SBDG*~60F2P	9PBK □ BH 9PFK □ BH	1200	110	60	kgfcm	106.9	128.3	142.6	178.2	200.0	200.0	200.0	200.0	200.0	200.0	200.0	200.0
					N.m	10.48	12.57	13.97	17.46	19.60	19.60	19.60	19.60	19.60	19.60	19.60	19.60
					kgfcm	104.9	125.9	139.9	174.9	200.0	200.0	200.0	200.0	200.0	200.0	200.0	200.0
		N.m			10.28	12.34	13.71	17.14	19.60	19.60	19.60	19.60	19.60	19.60	19.60	19.60	
		kgfcm			103.0	123.6	137.3	171.6	200.0	200.0	200.0	200.0	200.0	200.0	200.0	200.0	
		N.m			10.09	12.11	13.45	16.82	19.60	19.60	19.60	19.60	19.60	19.60	19.60	19.60	
	90	110	60	kgfcm	55.4	66.5	73.9	92.4	110.9	123.9	148.7	165.2	198.2	200.0	200.0		
				N.m	5.43	6.52	7.24	9.06	10.87	12.14	14.57	16.19	19.43	19.60	19.60		
				kgfcm	53.5	64.2	71.3	89.1	106.9	119.5	143.4	159.3	191.2	200.0	200.0		
		N.m	5.24	6.29	6.99	8.73	10.48	11.71	14.05	15.61	18.73	19.60	19.60				
		kgfcm	53.5	64.2	71.3	89.1	106.9	119.5	143.4	159.3	191.2	200.0	200.0				
		N.m	5.24	6.29	6.99	8.73	10.48	11.71	14.05	15.61	18.73	19.60	19.60				

Motor Model	Gearbox Model	회전속도 r/min	전압 V	주파수 Hz	감속비	3	3.6	5	6	7.5	9	10	12.5	15	18	20	25	30
9SBDG*~60F2H	9HBK □ BH 9HFK □ BH	1200	110	60	kgfcm	13.1	15.7	21.9	26.2	32.8	39.4	43.7	49.3	59.1	71.0	78.8	89.1	106.9
					N.m	1.29	1.54	2.14	2.57	3.21	3.86	4.29	4.83	5.79	6.95	7.73	8.73	10.48
					kgfcm	12.9	15.5	21.5	25.8	32.2	38.6	42.9	48.4	58.0	69.6	77.4	87.5	104.9
		N.m			1.26	1.51	2.10	2.52	3.16	3.79	4.21	4.74	5.69	6.82	7.58	8.57	10.28	
		kgfcm			12.6	15.2	21.1	25.3	31.6	37.9	42.1	47.5	56.9	68.3	75.9	85.8	103.0	
		N.m			1.24	1.49	2.06	2.48	3.10	3.71	4.13	4.65	5.58	6.70	7.44	8.41	10.09	
	90	110	60	kgfcm	6.8	8.2	11.3	13.6	17.0	20.4	22.7	25.6	30.7	36.8	40.9	46.2		
				N.m	0.67	0.80	1.11	1.33	1.67	2.00	2.22	2.50	3.00	3.61	4.01	4.53		
				kgfcm	6.6	7.9	10.9	13.1	16.4	19.7	21.9	24.6	29.6	35.5	39.4	44.6		
		N.m	0.64	0.77	1.07	1.29	1.61	1.93	2.14	2.41	2.90	3.48	3.86	4.37				
		kgfcm	6.6	7.9	10.9	13.1	16.4	19.7	21.9	24.6	29.6	35.5	39.4	44.6				
		N.m	0.64	0.77	1.07	1.29	1.61	1.93	2.14	2.41	2.90	3.48	3.86	4.37				

B AC Motors

S.C. Brake Motor 60W (□ 90mm)

감속기 부착 시 최대허용토크

Motor Model	Gear box Model	회전 속도 r/min	전압 V	주파수 Hz	감속비	36	40	50	60	75	90	100	120	150	180	200	
9SBDG* 60F2H	9HBK □ BH 9HFK □ BH	1200	110	60	kgfcm	128.3	142.6	178.2	213.8	239.0	286.7	300.0	300.0	300.0	300.0	300.0	
					N.m	12.57	13.97	17.46	20.96	23.42	28.10	29.40	29.40	29.40	29.40	29.40	
			90	220	60	kgfcm	125.9	139.9	174.9	209.9	234.5	281.4	300.0	300.0	300.0	300.0	300.0
		N.m				12.34	13.71	17.14	20.57	22.98	27.58	29.40	29.40	29.40	29.40	29.40	
		220/240		50	kgfcm	123.6	137.3	171.6	205.9	230.1	276.1	300.0	300.0	300.0	300.0	300.0	
		90	110	60	kgfcm	66.5	73.9	92.4	110.9	123.9	148.7	165.2	198.2	247.8	297.4	300.0	
N.m	6.52				7.24	9.06	10.87	12.14	14.57	16.19	19.43	24.28	29.14	29.40			
90	220		60	kgfcm	64.2	71.3	89.1	106.9	119.5	143.4	159.3	191.2	239.0	286.7	300.0		
		N.m		6.29	6.99	8.73	10.48	11.71	14.05	15.61	18.73	23.42	28.10	29.40			
	220/240	50	kgfcm	64.2	71.3	89.1	106.9	119.5	143.4	159.3	191.2	239.0	286.7	300.0			
N.m	6.29	6.99	8.73	10.48	11.71	14.05	15.61	18.73	23.42	28.10	29.40						

Motor Model	Gearbox Model	회전속도 r/min	전압 V	주파수 Hz	감속비	10	12	15	18	25	30	36	50	60
9SBDG* 60F2W	9WD □ BL/ □ BR/ □ BRL	1200	110	60	kgfcm	44.3	51.8	62.4	71.9	94.5	106.9	124.4	142.9	122.4
					N.m	4.34	5.08	6.11	7.05	9.26	10.48	12.19	14.00	12.00
			90	220	60	kgfcm	43.5	50.9	61.2	70.6	92.8	104.9	122.1	142.9
		N.m				4.26	4.99	6.00	6.92	9.09	10.28	11.97	14.00	12.00
		220/240		50	kgfcm	47.6	55.7	67.0	77.3	101.5	114.8	133.6	142.9	122.4
		90	110	60	kgfcm	23.0	26.9	32.3	37.3	49.0	55.4	64.5	84.0	92.4
N.m	2.25				2.63	3.17	3.66	4.80	5.43	6.32	8.23	9.06		
90	220		60	kgfcm	22.1	25.9	31.2	36.0	47.3	53.5	62.2	81.0	89.1	
		N.m		2.17	2.54	3.06	3.52	4.63	5.24	6.10	7.94	8.73		
	220/240	50	kgfcm	23.8	27.8	33.5	38.6	50.8	57.4	66.8	87.0	95.7		
N.m	2.33	2.73	3.28	3.79	4.97	5.63	6.55	8.53	9.38					

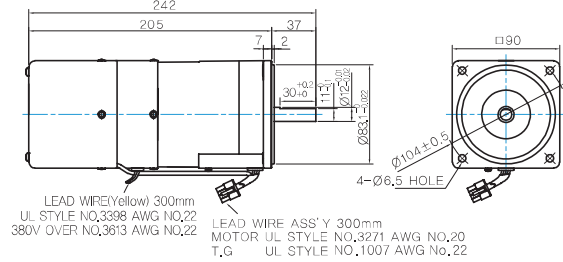
Motor Model	Gearbox Model	회전 속도 r/min	전압 V	주파수 Hz	감속비	5	7.5	10	15	20	25	30	40	50	60	80
9SBDG* 60F2WH	9WHD □ -030	1200	110	60	kgfcm	18.8	27.2	35.0	49.2	62.2	71.3	82.9	102.0	116.6	129.6	132.7
					N.m	1.84	2.67	3.43	4.83	6.10	6.99	8.13	9.99	11.43	12.70	13.00
			90	220	60	kgfcm	18.4	26.7	34.3	48.3	61.1	70.0	81.4	100.1	114.5	127.2
		N.m				1.81	2.62	3.37	4.74	5.98	6.86	7.98	9.81	11.22	12.47	13.00
		220/240		50	kgfcm	20.2	29.2	37.6	52.9	66.8	76.6	89.1	109.5	125.3	139.2	132.7
		90	110	60	kgfcm	11.7	17.0	21.9	30.8	38.9	44.6	51.8	63.7	72.9	81.0	95.0
N.m	1.15				1.67	2.14	3.02	3.81	4.37	5.08	6.24	7.14	7.94	9.31		
220/240	50		kgfcm	12.6	18.3	23.5	33.1	41.8	47.9	55.7	68.4	78.3	87.0	102.1		
N.m	1.24	1.79	2.30	3.24	4.09	4.69	5.46	6.71	7.67	8.53	10.00					

- 1) 모터 모델명 * 자리에는 전압코드가 들어갑니다.
- 2) 감속기 모델명 □ 안에는 감속비가 들어갑니다.
- 3) 위의 표에서 색칠된 범위의 감속비를 선택했을 때 감속기의 출력축은 모터의 출력축과 같은 방향으로 회전합니다.
흰색 바탕 범위의 감속비에서는 감속기 출력축은 모터 출력축의 회전방향과 반대방향으로 회전합니다.
- 4) 회전속도(r/min)는 모터의 동기회전속도(50Hz:1500r/min, 60Hz:1800r/min)를 감속비로 나누어 계산합니다.
실제 회전속도는 부하의 크기에 따라 표시보다 2~20% 정도 느립니다.

Dimensions

MOTOR ONLY

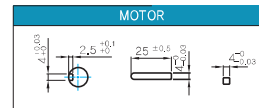
- MOTOR MODEL:
9SBDD□-60F2 (POWERFUL FAN)



MOTOR OUTPUT SHAFT

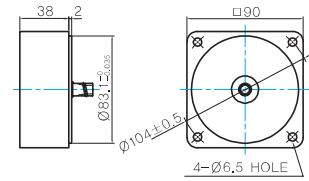
MODEL	SPEC
D-CUT TYPE	
9SBDD□-60F2	
KEY TYPE	
9SBDK□-60F2	

KEY SPEC



중간감속기

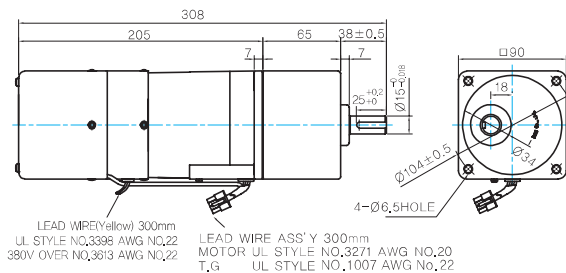
- MODEL: 9XD10□□



GEARED MOTOR

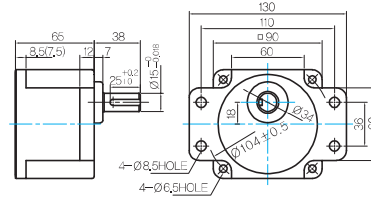
P TYPE GEARBOX

- MOTOR MODEL:
9SBDG□-60F2P (POWERFUL FAN)



- GEARBOX MODEL:
9PBK□BH

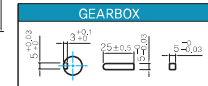
- GEARBOX MODEL:
9PFK□BH



GEARBOX OUTPUT SHAFT

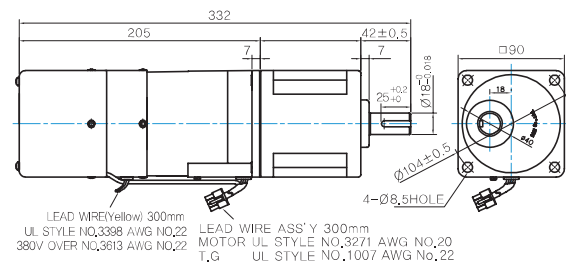
MODEL	SPEC
KEY TYPE	
9PBK□BH	
9PFK□BH	

KEY SPEC



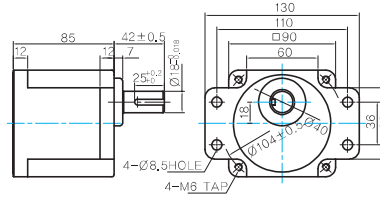
H TYPE GEARBOX

- MOTOR MODEL:
9SBDG□-60F2H (POWERFUL FAN)



- GEARBOX MODEL:
9HBK□BH

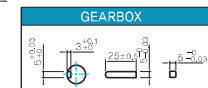
- GEARBOX MODEL:
9HFK□BH



GEARBOX OUTPUT SHAFT

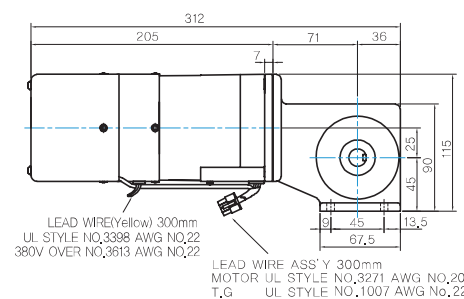
MODEL	SPEC
KEY TYPE	
9HBK□BH	
9HFK□BH	

KEY SPEC



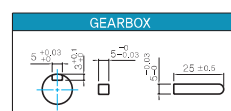
W TYPE GEARBOX

- MOTOR MODEL:
9SBDG□-60F2W (POWERFUL FAN)



- GEARBOX MODEL:
9WD□BL/BR/BRL

KEY SPEC

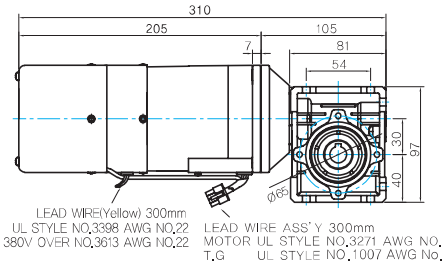


B AC Motors

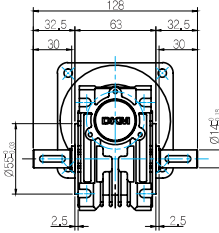
S.C. Brake Motor 60W (□ 90mm)

WH TYPE GEARBOX

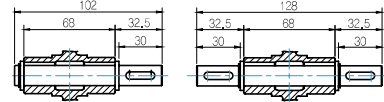
MOTOR MODEL:
9SBDG□-60F2WH (POWERFUL FAN)



GEARBOX MODEL:
9WHD□-030

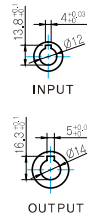


SHAFT



한방향

양방향

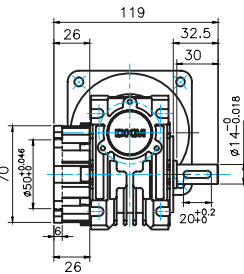
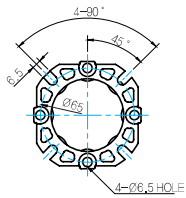


WEIGHT

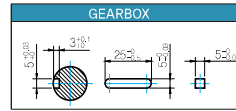
PART	WEIGHT(Kg)
MOTOR	3,40
9PB(F)K2BH - 9PB(F)K10BH	1,28
9PB(F)K12.5BH - 9PB(F)K20BH	1,3
9PB(F)K25BH - 9PB(F)K60BH	1,45
9PB(F)K75BH - 9PB(F)K200BH	1,47
9HB(F)K3BH - 9HB(F)K10BH	1,62
9HB(F)K12.5BH - 9HB(F)K20BH	1,68
9HB(F)K25BH - 9HB(F)K60BH	1,73
9HB(F)K75BH - 9HB(F)K200BH	1,78
9WD□BL/BR/BRL	1,0
9WHD□-030	1,2
9XD10□	0,6

* 출력 FLANGE와 SHAFT는 별매입니다.

FLANGE



KEY SPEC



Motor Images

