

# B AC Motors

## Induction Motor 40W(□ 90mm)

# 40W Induction Motor 40W(□ 90mm)

### Motor 사양

Model		Output W	Voltage V	Frequency Hz	Poles	Duty	Starting Torque		Rated Load			Capacitor μF / VAC	
Lead Wire Type	Terminal Box Type						kgfcm	N.m	Speed r/min	Current A	Torque kgfcm N.m		
9IDG*(A)-40□ 9IDD*(A)-40(-T): Gear Type Shaft 9IDK*(A)-40(-T): Key Type Shaft		40	1φ110	60	4	Cont.	2.60	0.260	1600	0.80	2.44	0.244	10.0 / 250
9IDG2(D)-40□ 9IDG2(D)-40□-T		40	1φ220	60	4	Cont.	2.60	0.260	1600	0.45	2.44	0.244	2.5 / 450
9IDGE-40□ 9IDGE-40□-T		40	1φ220 1φ240	50	4	Cont.	2.10 2.60	0.210 0.260	1300	0.33 0.36	3.00 3.00	0.300 0.300	2.0 / 450
9IDG3(G)-40□ 9IDG3(G)-40□-T		40	3φ220 3φ230	50 60	4	Cont.	9.90 7.90	0.990 0.790	1350 1600	0.33 0.31	2.89 2.44	0.289 0.244	-
9IDG4(K)-40□ 9IDG4(K)-40□-T		40	3φ380 3φ400	50 60	4	Cont.	10.20 8.00	1.020 0.800	1350 1600	0.19 0.18	2.89 2.44	0.289 0.244	-
9IDG5(L)-40□ 9IDG5(L)-40□-T		40	3φ415	50 60	4	Cont.	10.00 8.00	1.000 0.800	1350 1600	0.17 0.16	2.89 2.44	0.289 0.244	-
				50 60	4	Cont.	11.10 8.90	1.110 0.890	1350 1600	0.20 0.17	2.89 2.44	0.289 0.244	

- 1) 모터 모델명 \* 자리에는 전압코드가, □ 안에는 부착되는 감속기의 모델 타입명이 들어갑니다. 2) 전압코드 A, D, E, G, K, L은 TP(Thermal Protector) 부착 사양입니다.  
3) Gear Type Shaft는 감속기 부착용이며 D-Cut 및 Key Type Shaft는 모터 단독 사용시의 출력축입니다.  
4) 삼상 380V~440V 모터에서는 인버터 사용을 할 수 없습니다. 인버터 사용시 권선의 절연이 열화되어 모터가 파손될 수 있습니다.

### 감속기 부착 시 최대허용토크

#### 60Hz

Motor Model	Gearbox Model	감속비 r/min	2	3	3.6	5	6	7.5	9	10	12.5	15	18	20	25	30	36	40	50	60	75	90	100
			900	600	500	360	300	240	200	180	144	120	100	90	72	60	50	45	36	30	24	20	18
9IDG*-40G	9GBK□BMH	kgfcm N.m	3.9 0.39	5.9 0.58	7.1 0.70	9.9 0.97	11.8 1.16	14.8 1.45	17.8 1.74	19.7 1.93	24.7 2.42	29.6 2.90	35.5 3.48	35.6 3.48	44.4 4.35	53.3 5.23	64.0 6.27	71.1 6.97	80.4 7.87	96.4 9.45	100.0 9.80	100.0 9.80	100.0 9.80

Motor Model	Gearbox Model	감속비 r/min	120	150	180	200	Motor Model	Gearbox Model	감속비 r/min	10	12	15	18	25	30	36	50	60
			15	12	10	9				9IDG*-40W	9WD□BL/ □BR/□BRL	kgfcm N.m	180	150	120	100	72	60
9IDG*-40G	9GBK□BMH	kgfcm N.m	100.0 9.80	100.0 9.80	100.0 9.80	100.0 9.80	9IDG*-40W	9WD□BL/ □BR/□BRL	kgfcm N.m	20.0 1.96	23.4 2.29	28.1 2.76	32.4 3.18	42.6 4.18	48.2 4.72	56.1 5.50	73.1 7.16	80.4 7.87

Motor Model	Gearbox Model	감속비 r/min	2	3	3.6	5	6	7.5	9	10	12.5	15	18	20	25	30	36	40	50	60	75	90	100	120	150	180	200
			900	600	500	360	300	240	200	180	144	120	100	90	72	60	50	45	36	30	24	20	18	15	12	10	9
9IDG*-40P	9PBK□BH 9PFK□BH	kgfcm N.m	3.9 0.39	5.9 0.58	7.1 0.70	9.9 0.97	11.8 1.16	14.8 1.45	17.8 1.74	19.7 1.93	22.2 2.18	26.7 2.61	32.0 3.14	35.6 3.48	40.2 3.94	48.2 4.72	57.9 5.67	64.3 6.30	80.4 7.87	96.4 9.45	107.7 10.56	129.3 12.67	143.7 14.08	172.4 16.90	200.0 19.60	200.0 19.60	200.0 19.60

#### 50Hz

Motor Model	Gearbox Model	감속비 r/min	2	3	3.6	5	6	7.5	9	10	12.5	15	18	20	25	30	36	40	50	60	75	90	100
			750	500	417	300	250	200	167	150	120	100	83	75	60	50	42	38	30	25	20	17	15
9IDG*-40G	9GBK□BMH	kgfcm N.m	4.7 0.46	7.0 0.69	8.4 0.82	11.7 1.15	14.0 1.37	17.5 1.72	21.0 2.06	23.4 2.29	29.2 2.86	35.1 3.44	42.1 4.12	42.1 4.13	52.7 5.16	63.2 6.19	75.8 7.43	84.3 8.26	95.2 9.33	100.0 9.80	100.0 9.80	100.0 9.80	100.0 9.80

Motor Model	Gearbox Model	감속비 r/min	120	150	180	200	Motor Model	Gearbox Model	감속비 r/min	10	12	15	18	25	30	36	50	60
			13	10	8	7				9IDG*-40W	9WD□BL/□BR/□BRL	kgfcm N.m	150	125	100	83	60	50
9IDG*-40G	9GBK□BMH	kgfcm N.m	100.0 9.80	100.0 9.80	100.0 9.80	100.0 9.80	9IDG*-40W	9WD□BL/□BR/□BRL	kgfcm N.m	23.7 2.32	27.7 2.72	33.3 3.27	38.4 3.77	50.5 4.95	57.1 5.60	66.5 6.52	86.6 8.48	95.2 9.33

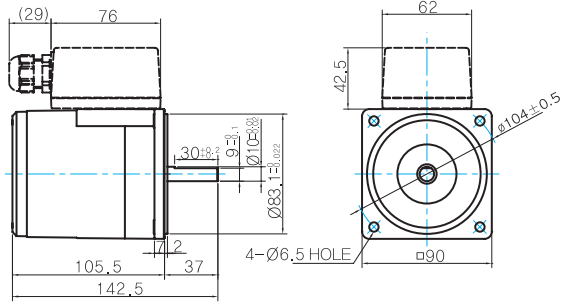
Motor Model	Gearbox Model	감속비 r/min	2	3	3.6	5	6	7.5	9	10	12.5	15	18	20	25	30	36	40	50	60	75	90	100	120	150	180	200
			750	500	417	300	250	200	167	150	120	100	83	75	60	50	42	37.5	30	25	20	17	15	12.5	10	8	7.5
9IDG*-40P	9PBK□BH 9PFK□BH	kgfcm N.m	4.7 0.46	7.0 0.69	8.4 0.82	11.7 1.15	14.0 1.37	17.5 1.72	21.0 2.06	23.4 2.29	26.3 2.58	31.6 3.10	37.9 3.72	42.1 4.13	47.6 4.67	57.1 5.60	68.6 6.72	76.2 7.47	95.2 9.33	114.3 11.20	127.7 12.51	153.2 15.02	170.3 16.69	200.0 19.60	200.0 19.60	200.0 19.60	

- 1) 모터 모델명 \* 자리에는 전압코드가 들어갑니다. 2) 감속기 모델명 □ 안에는 감속비가 들어갑니다. 3) 위의 표에서 색칠된 범위의 감속비를 선택했을 때 감속기의 출력축은 모터의 출력축과 같은 방향으로 회전합니다. 흰색 바탕 범위의 감속비에서는 감속기 출력축은 모터 출력축의 회전방향과 반대방향으로 회전합니다.  
4) 회전속도(r/min)는 모터의 동기회전속도(50Hz:1500r/min, 60Hz:1800r/min)를 감속비로 나누어 계산합니다. 실제 회전속도는 부하의 크기에 따라 표시보다 2~20% 정도 느립니다.

## Dimensions

### MOTOR ONLY

- MOTOR MODEL: 9IDD□-40(-T) (NO FAN)

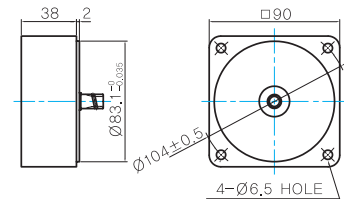


### MOTOR OUTPUT SHAFT

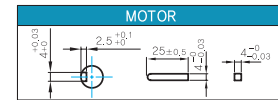
MODEL	SPEC
D-CUT TYPE	
KEY TYPE	

### 중간감속기

- MODEL: 9XD10□□



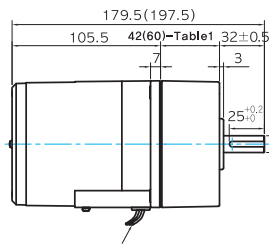
### KEY SPEC



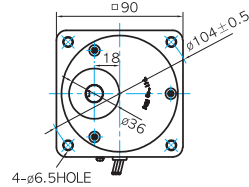
### GEARED MOTOR

#### G TYPE GEARBOX

- MOTOR MODEL: 9IDG□-40G (NO FAN)



- GEARBOX MODEL: 9GBK□BMH



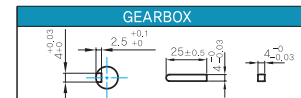
#### GEARBOX OUTPUT SHAFT

MODEL	SPEC
KEY TYPE	

#### 42(60)-Table1

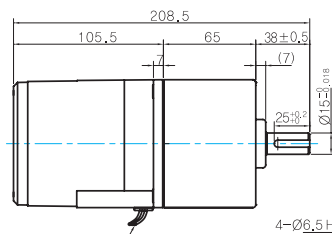
SIZE(mm)	GEAR RATIO
42	9GBK2BMH - 9GBK18BMH
60	9GBK20BMH - 9GBK200BMH

#### Key Spec

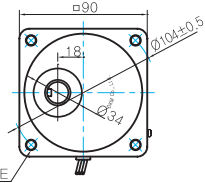


#### P TYPE GEARBOX

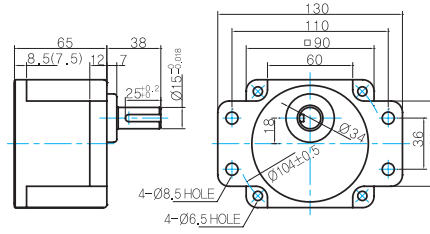
- MOTOR MODEL: 9IDG□-40P (NO FAN)



- GEARBOX MODEL: 9PBK□BH



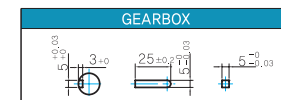
- GEARBOX MODEL: 9PFK□BH



#### GEARBOX OUTPUT SHAFT

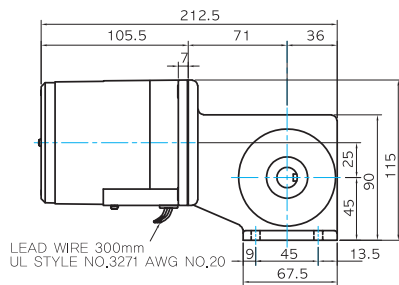
MODEL	SPEC
KEY TYPE	

#### KEY SPEC

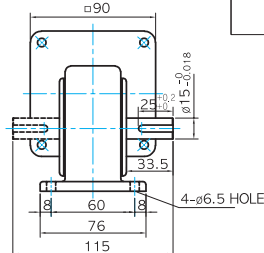


#### W TYPE GEARBOX

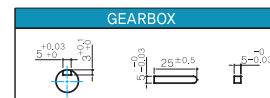
- MOTOR MODEL: 9IDG□-40W (NO FAN)



- GEARBOX MODEL: 9WD□BL/BR/BRL



#### KEY SPEC



#### WEIGHT

PART	WEIGHT(Kg)	
MOTOR	2.45	
GEAR BOX	9GBK2BMH ~ 9GBK18BMH	0.78
	9GBK20BMH ~ 9GBK40BMH	1.1
	9GBK50BMH ~ 9GBK200BMH	1.2
	9PB(F)K2BH ~ 9PB(F)K10BH	1.28
	9PB(F)K12.5BH ~ 9PB(F)K20BH	1.3
	9PB(F)K25BH ~ 9PB(F)K60BH	1.45
	9PB(F)K75BH ~ 9PB(F)K200BH	1.47
	9WD□BL/BR/BRL	1.0
	9XD10□□	0.6

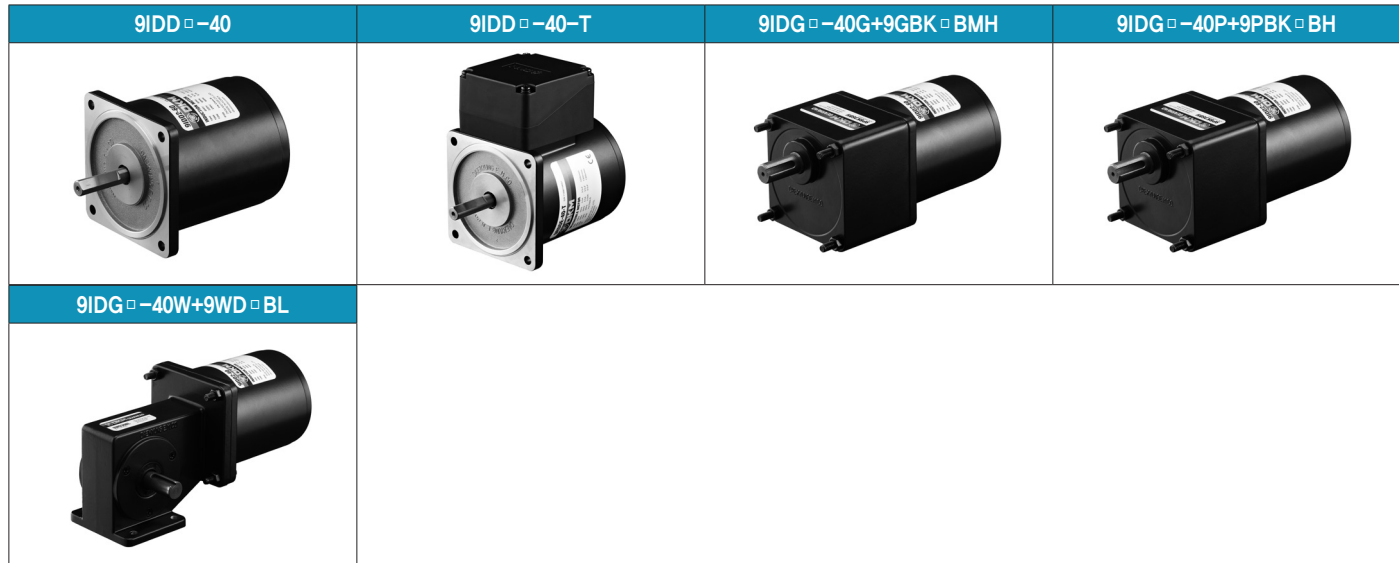
LEAD WIRE 300mm  
UL STYLE NO.3271 AWG NO.20

LEAD WIRE 300mm  
UL STYLE NO.3271 AWG NO.20

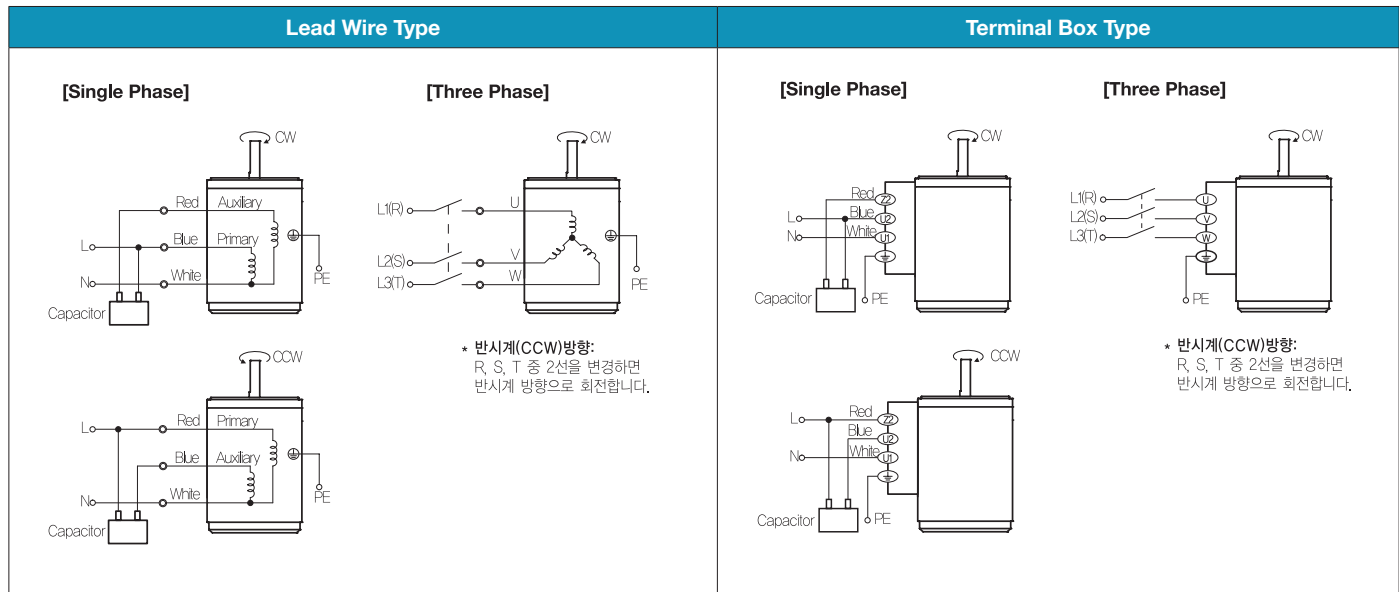
# B AC Motors

Induction Motor 40W(□ 90mm)

## Motor Images



## 결선도



- 회전방향은 모터 축 측에서 본 방향을 나타냅니다.
- CW는 시계방향, CCW는 반시계방향입니다.
- 단상 모터의 회전방향 전환은 모터 정지 후에 실시하여 주십시오. 모터 회전 중에 회전방향을 전환하면 방향이 전환되지 않거나 시간이 지체되어 전환되는 경우가 있습니다.