

120W

Speed Control
Reversible Motor
120W(□90mm)

Motor Specification

Model 9SRDG*-120F2□: Gear Type Shaft 9SRDD*-120F2: D-Cut Type Shaft 9SRDK*-120F2: Key Type Shaft	Output W	Voltage V	Frequency Hz	Poles	Duty	Speed Range r/min	Starting Torque		Permissible Torque				Capacitor μF / VAC
									1200r/min		90r/min		
									kgfcm	N.m	kgfcm	N.m	
9SRDGA-120F2□	120	1∅110	60	4	30min.	90-1700	7.80	0.780	7.50	0.750	4.20	0.420	30.0 / 250
9SRDGD-120F2□	120	1∅220	60	4	30min.	90-1700	7.80	0.780	7.50	0.750	4.20	0.420	6.5 / 400
9SRDGE-120F2□	120	1∅220	50	4	30min.	90-1400	5.60	0.560	7.20	0.720	4.00	0.400	6.5 / 400
		1∅240					6.50	0.650	7.90	0.790	4.00	0.400	

1) Enter the phase & voltage code in the place * and enter the model type of attaching Gearbox in the box (□) within the motor model name.

2) All models contain a built-in thermal protector.

3) Gear Type Shaft are for attaching Gearbox and D-Cut & Key Type Shaft are for using motor only.

Max. Permissible Torque at Output Shaft of Gearbox

Motor Model	Gearbox Model	r/min	V	Hz	Gear Ratio	2	3	3.6	5	6	7.5	9	12.5	15	18	20
9SRDG□ -120F2P	9PBK□BH 9PFK□BH	1200	110	60	kgfcm	12.5	18.7	22.4	31.1	37.4	46.7	56.0	70.3	84.4	101.3	102.0
					N.m	1.22	1.83	2.20	3.05	3.66	4.58	5.49	6.89	8.27	9.92	10.00
			220	60	kgfcm	12.5	18.7	22.4	31.1	37.4	46.7	56.0	70.3	84.4	101.3	102.0
		220/ 240	50	N.m	1.22	1.83	2.20	3.05	3.66	4.58	5.49	6.89	8.27	9.92	10.00	
		90	110	60	kgfcm	12.0	17.9	21.5	29.9	35.9	44.8	53.8	67.5	81.0	97.2	97.9
					N.m	1.17	1.76	2.11	2.93	3.51	4.39	5.27	6.62	7.94	9.53	9.60
220	60		kgfcm	7.0	10.5	12.5	17.4	20.9	26.1	31.4	39.4	47.3	56.7	57.1		
220/ 240	220	60	N.m	0.68	1.02	1.23	1.71	2.05	2.56	3.07	3.86	4.63	5.56	5.60		
			kgfcm	7.0	10.5	12.5	17.4	20.9	26.1	31.4	39.4	47.3	56.7	57.1		
	220/ 240	50	N.m	0.68	1.02	1.23	1.71	2.05	2.56	3.07	3.86	4.63	5.56	5.60		
kgfcm	6.6	10.0	12.0	16.6	19.9	24.9	29.9	37.5	45.0	54.0	54.4					
N.m	0.65	0.98	1.17	1.63	1.95	2.44	2.93	3.68	4.41	5.29	5.33					

Motor Model	Gearbox Model	r/min	V	Hz	Gear Ratio	25	30	36	40	50	60	75	90	100	120	150	180
9SRDG□ -120F2P	9PBK□BH 9PFK□BH	1200	110	60	kgfcm	127.5	153.0	183.6	200.0	200.0	200.0	200.0	200.0	200.0	200.0	200.0	200.0
					N.m	12.50	14.99	17.99	19.60	19.60	19.60	19.60	19.60	19.60	19.60	19.60	19.60
			220	60	kgfcm	127.5	153.0	183.6	200.0	200.0	200.0	200.0	200.0	200.0	200.0	200.0	200.0
		220/ 240	50	N.m	12.50	14.99	17.99	19.60	19.60	19.60	19.60	19.60	19.60	19.60	19.60	19.60	19.60
		90	110	60	kgfcm	122.4	146.9	176.3	195.8	200.0	200.0	200.0	200.0	200.0	200.0	200.0	200.0
					N.m	12.00	14.39	17.27	19.19	19.60	19.60	19.60	19.60	19.60	19.60	19.60	19.60
220	60		kgfcm	71.4	85.7	102.8	114.2	142.8	171.4	192.2	200.0	200.0	200.0	200.0			
220/ 240	220	60	N.m	7.00	8.40	10.08	11.20	13.99	16.79	18.83	19.60	19.60	19.60	19.60			
			kgfcm	71.4	85.7	102.8	114.2	142.8	171.4	192.2	200.0	200.0	200.0	200.0			
	220/ 240	50	N.m	7.00	8.40	10.08	11.20	13.99	16.79	18.83	19.60	19.60	19.60	19.60			
kgfcm	68.0	81.6	97.9	108.8	136.0	163.2	183.0	200.0	200.0	200.0	200.0						
N.m	6.66	8.00	9.60	10.66	13.33	15.99	17.93	19.60	19.60	19.60	19.60						

1) Enter the phase & voltage code in the box (□) within the motor model name.

2) Enter the gear ratio in the box (□) within the Gearbox model name.

3) A colored background indicates gear shaft rotation in the same direction as the motor shaft; a white background indicates rotation in the opposite direction.

4) The rotating speed is calculated by dividing the motor's synchronous speed (50Hz: 1,500r/min, 60Hz: 1,800r/min) by the gear ratio.

The actual speed is 2-20% less than the displayed value, depending on the size of the load.

B AC Motors

S.C. Reversible Motor 120W (□90mm)

Max. Permissible Torque at Output Shaft of Gearbox

Motor Model	Gearbox Model	r/min	V	Hz	Gear Ratio	3	3.6	6	9	12.5	15	18	20	25	30	36	50	60	75	90	100	120	150	180	200		
9SRDG□ -120F2H	9HBK □BH 9HFK □BH	1200	110	60	kgfcm	18.7	22.4	37.4	56.0	70.3	84.4	101.3	102.0	127.5	153.0	183.6	255.0	300.0	300.0	300.0	300.0	300.0	300.0	300.0	300.0	300.0	
					N.m	1.83	2.20	3.66	5.49	6.89	8.27	9.92	10.00	12.50	14.99	17.99	24.99	29.40	29.40	29.40	29.40	29.40	29.40	29.40	29.40	29.40	29.40
			220	60	kgfcm	18.7	22.4	37.4	56.0	70.3	84.4	101.3	102.0	127.5	153.0	183.6	255.0	300.0	300.0	300.0	300.0	300.0	300.0	300.0	300.0	300.0	300.0
		N.m	1.83	2.20	3.66	5.49	6.89	8.27	9.92	10.00	12.50	14.99	17.99	24.99	29.40	29.40	29.40	29.40	29.40	29.40	29.40	29.40	29.40	29.40	29.40	29.40	29.40
		220/240	50	kgfcm	17.9	21.5	35.9	53.8	67.5	81.0	97.2	97.9	122.4	146.9	176.3	244.8	293.8	300.0	300.0	300.0	300.0	300.0	300.0	300.0	300.0	300.0	300.0
		N.m	1.76	2.11	3.51	5.27	6.62	7.94	9.53	9.60	12.00	14.39	17.27	23.99	28.79	29.40	29.40	29.40	29.40	29.40	29.40	29.40	29.40	29.40	29.40	29.40	29.40
90	110	60	kgfcm	10.5	12.5	20.9	31.4	39.4	47.3	56.7	57.1	71.4	85.7	102.8	142.8	171.4	192.2	230.6	256.2	300.0	300.0	300.0	300.0	300.0	300.0	300.0	
			N.m	1.02	1.23	2.05	3.07	3.86	4.63	5.56	5.60	7.00	8.40	10.08	13.99	16.79	18.83	22.60	25.11	29.40	29.40	29.40	29.40	29.40	29.40	29.40	
	220	60	kgfcm	10.5	12.5	20.9	31.4	39.4	47.3	56.7	57.1	71.4	85.7	102.8	142.8	171.4	192.2	230.6	256.2	300.0	300.0	300.0	300.0	300.0	300.0	300.0	
	N.m	1.02	1.23	2.05	3.07	3.86	4.63	5.56	5.60	7.00	8.40	10.08	13.99	16.79	18.83	22.60	25.11	29.40	29.40	29.40	29.40	29.40	29.40	29.40	29.40		
	220/240	50	kgfcm	10.0	12.0	19.9	29.9	37.5	45.0	54.0	54.4	68.0	81.6	97.9	136.0	163.2	183.0	219.6	244.0	292.8	300.0	300.0	300.0	300.0	300.0	300.0	
	N.m	0.98	1.17	1.95	2.93	3.68	4.41	5.29	5.33	6.66	8.00	9.60	13.33	15.99	17.93	21.52	23.91	28.69	29.40	29.40	29.40	29.40	29.40	29.40	29.40		

Motor Model	Gearbox Model	r/min	V	Hz	Gear Ratio	10	12	15	18	25	30	36	50	60
9SRDG□ -120F2W	9WD□BL/ □BR/□BRL	1200	110	60	kgfcm	61.5	72.0	86.6	99.9	131.3	148.5	153.1	142.9	122.4
					N.m	6.03	7.06	8.49	9.79	12.86	14.55	15.00	14.00	12.00
			220	60	kgfcm	61.5	72.0	86.6	99.9	131.3	148.5	153.1	142.9	142.9
		N.m	6.03	7.06	8.49	9.79	12.86	14.55	15.00	14.00	12.00			
		220/240	50	kgfcm	59.0	69.1	83.2	95.9	126.0	142.6	153.1	142.9	122.4	
		N.m	5.79	6.77	8.15	9.40	13.97	15.00	14.00	12.00				
90	110	60	kgfcm	34.4	40.3	48.5	55.9	73.5	83.2	96.8	126.0	122.4		
			N.m	3.38	3.95	4.75	5.48	7.20	8.15	9.48	12.35	12.00		
	220	60	kgfcm	34.4	40.3	48.5	55.9	73.5	83.2	96.8	126.0	122.4		
N.m	3.38	3.95	4.75	5.48	7.20	8.15	9.48	12.35	12.00					
220/240	50	kgfcm	32.8	38.4	46.2	53.3	70.0	79.2	92.2	120.0	122.4			
N.m	3.21	3.76	4.53	5.22	6.86	7.76	9.03	11.76	12.00					

Motor Model	Gearbox Model	r/min	V	Hz	Gear Ratio	7.5	10	15	20	25	30	40	50	60	80
9SRDG□ -120F2WH	9WHD□-030	1200	110	60	kgfcm	47.3	60.8	85.5	108.0	123.8	144.0	177.0	173.5	163.3	132.7
					N.m	4.63	5.95	8.38	10.58	12.13	14.11	17.35	17.00	16.00	13.00
			220	60	kgfcm	47.3	60.8	85.5	108.0	123.8	144.0	177.0	173.5	163.3	163.3
		N.m	4.63	5.95	8.38	10.58	12.13	14.11	17.35	17.00	16.00	13.00			
		220/240	50	kgfcm	49.8	64.0	90.1	113.8	130.4	151.7	183.7	173.5	163.3	163.3	132.7
		N.m	4.88	6.27	8.83	11.15	12.77	14.86	18.00	17.00	16.00	13.00			
90	110	60	kgfcm	26.5	34.0	47.9	60.5	69.3	80.6	99.1	113.4	126.0	132.7		
			N.m	2.59	3.33	4.69	5.93	6.79	7.90	9.71	11.11	12.35	13.00		
	220	60	kgfcm	26.5	34.0	47.9	60.5	69.3	80.6	99.1	113.4	126.0	132.7		
N.m	2.59	3.33	4.69	5.93	6.79	7.90	9.71	11.11	12.35	13.00					
220/240	50	kgfcm	25.2	32.4	45.6	57.6	66.0	76.8	94.4	108.0	120.0	132.7			
N.m	2.47	3.18	4.47	5.64	6.47	7.53	9.25	10.58	11.76	13.00					

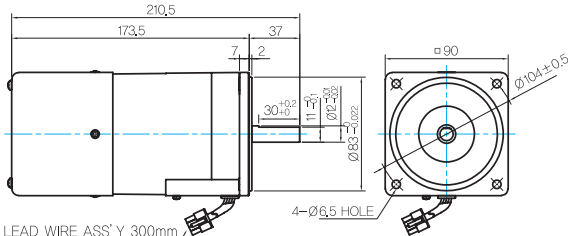
Motor Images



Dimensions

MOTOR ONLY

- MOTOR MODEL:
9SRDD□-120F2 (POWERFUL FAN)

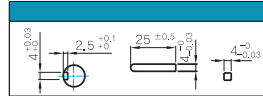


LEAD WIRE ASS'Y 300mm
MOTOR UL STYLE NO.3271 AWG NO.22
T.G UL STYLE NO.1430 AWG NO.24

MOTOR OUTPUT SHAFT

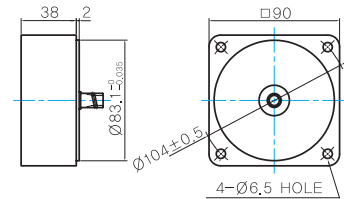
MODEL	SPEC
D-CUT TYPE	
9SRDD□-120F2	
KEY TYPE	
9SRDK□-120F2	

KEY SPEC



INTER-DECIMAL GEARBOX

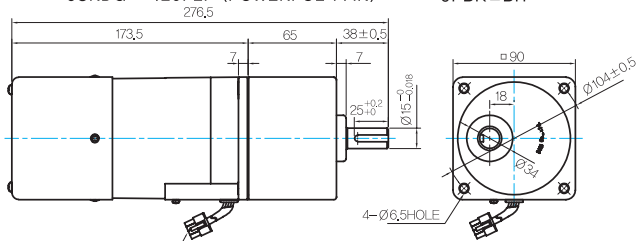
- MODEL: 9XD10□□



GEARED MOTOR

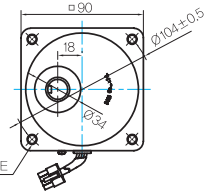
P TYPE GEARBOX

- MOTOR MODEL:
9SRDG□-120F2P (POWERFUL FAN)

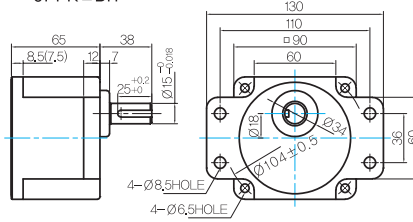


LEAD WIRE ASS'Y 300mm
MOTOR UL STYLE NO.3271 AWG NO.22
T.G UL STYLE NO.1430 AWG NO.24

- GEARBOX MODEL:
9PBK□BH



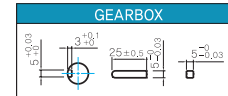
- GEARBOX MODEL:
9PFK□BH



GEARBOX OUTPUT SHAFT

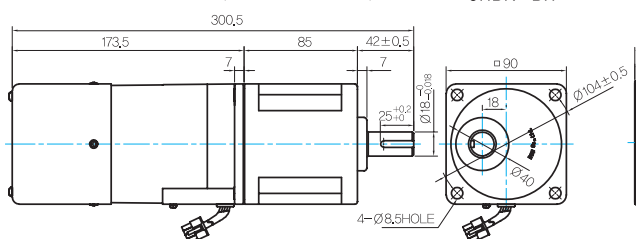
MODEL	SPEC
KEY TYPE	
9PBK□BH	
9PFK□BH	

KEY SPEC



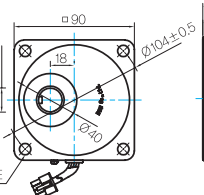
H TYPE GEARBOX

- MOTOR MODEL:
9SRDG□-120F2H (POWERFUL FAN)

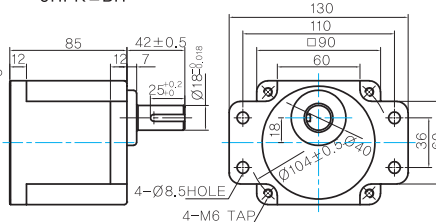


LEAD WIRE ASS'Y 300mm
MOTOR UL STYLE NO.3271 AWG NO.22
T.G UL STYLE NO.1430 AWG NO.24

- GEARBOX MODEL:
9HBK□BH



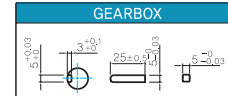
- GEARBOX MODEL:
9HFK□BH



GEARBOX OUTPUT SHAFT

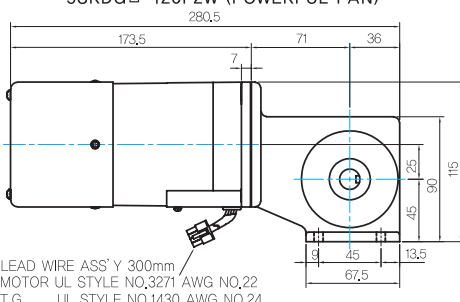
MODEL	SPEC
KEY TYPE	
9HBK□BH	
9HFK□BH	

KEY SPEC



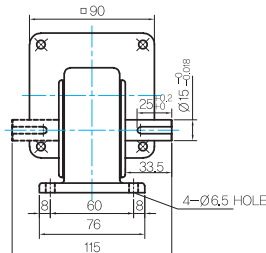
W TYPE GEARBOX

- MOTOR MODEL:
9SRDG□-120F2W (POWERFUL FAN)

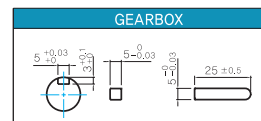


LEAD WIRE ASS'Y 300mm
MOTOR UL STYLE NO.3271 AWG NO.22
T.G UL STYLE NO.1430 AWG NO.24

- GEARBOX MODEL:
9WD□BL/BR/BRL



KEY SPEC



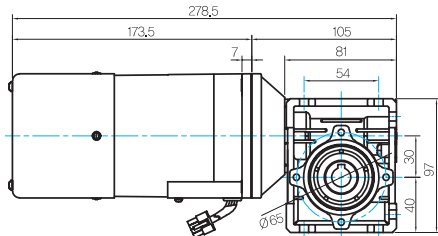
B AC Motors

S.C. Reversible Motor 120W (□90mm)

Dimensions

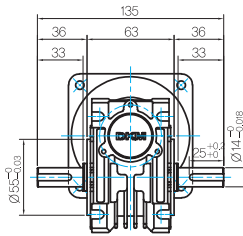
WH TYPE GEARBOX

- MOTOR MODEL:
9SRDG□-120F2WH (POWERFUL FAN)

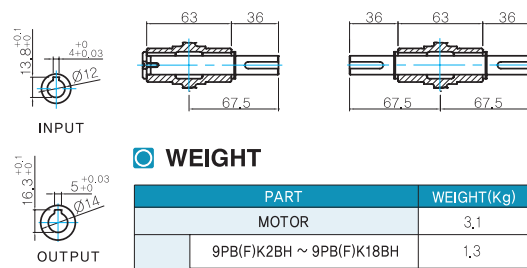


LEAD WIRE ASS'Y 300mm
MOTOR UL STYLE NO,3271 AWG NO,22
T,G UL STYLE NO,1430 AWG NO,24

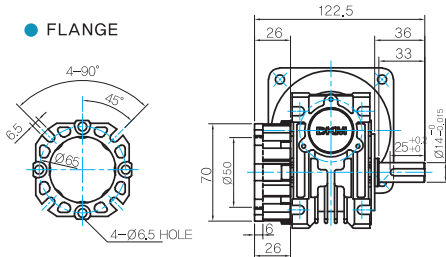
- GEARHEAD MODEL:
9WHD□-030



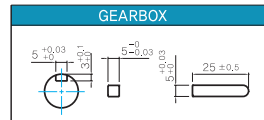
- SHAFT(Unidirectional, Bi-directional)



- FLANGE



- KEY SPEC



WEIGHT

	PART	WEIGHT(Kg)
GEAR BOX	MOTOR	3,1
	9PB(F)K2BH ~ 9PB(F)K18BH	1,3
	9PB(F)K20BH ~ 9PB(F)K200BH	1,4
	9HB(F)K3BH ~ 9HB(F)K9BH	1,45
	9HB(F)K12.5BH ~ 9HB(F)K18BH	1,5
	9HB(F)K20BH ~ 9HB(F)K60BH	1,7
	9HB(F)K75BH ~ 9HB(F)K200BH	1,8
	9WD□BL/BR/BRL	1,0
	9WHD□-030	1,13
	9XD10□□	0,5

* The output flange and shafts are sold separately.