

S.C. Reversible Motor 120W (□90mm)

# 120W

Speed Control  
Reversible Motor  
120W(□90mm)

## Motor 사양

Model 9SRDG*-120F2: Gear Type Shaft 9SRDD*-120F2: D-Cut Type Shaft 9SRDK*-120F2: Key Type Shaft	Output W	Voltage V	Frequency Hz	Poles	Duty	Speed Range r/min	Starting Torque kgfcm N.m		Permissible Torque				Capacitor μF / VAC
									1200r/min		90r/min		
									kgfcm	N.m	kgfcm	N.m	
9SRDG1(A)-120F2 □	120	1φ110	60	4	30min.	90-1700	7.80	0.780	8.20	0.820	3.60	0.360	30.0 / 250
9SRDG2(D)-120F2 □	120	1φ220	60	4	30min.	90-1700	7.60	0.760	8.00	0.800	3.30	0.330	7.0 / 450
9SRDGE-120F2 □	120	1φ220	50	4	30min.	90-1400	6.00	0.600	7.50	0.750	3.30	0.330	7.0 / 450
		6.50					0.650	8.00	0.800	3.80	0.380		

- 1) 모터 모델명 \* 자리에는 전압코드가, □ 안에는 부착되는 감속기의 모델 타입명이 들어갑니다.
- 2) 전압코드 A, D, E는 TPI(Thermal Protector) 부착 사양입니다.
- 3) Gear Type Shaft는 감속기 부착용이며 D-Cut & Key Type Shaft는 모터 단독 사용시의 출력축입니다.

## 감속기 부착 시 최대허용토크

Motor Model	Gearbox Model	회전 속도 r/min	전압 V	주파수 Hz	감속비	2	3	3.6	5	6	7.5	9	10	12.5	15	18	20
9SRDG*-120F2P	9PBK □ BH 9PFK □ BH	1200	110	60	kgfcm	13.3	19.9	23.9	33.2	39.9	49.8	59.8	66.4	74.8	89.8	107.7	119.7
					N.m	1.30	1.95	2.34	3.25	3.91	4.88	5.86	6.51	7.33	8.80	10.56	11.73
					kgfcm	13.0	19.4	23.3	32.4	38.9	48.6	58.3	64.8	73.0	87.6	105.1	116.8
		N.m	1.27	1.91	2.29	3.18	3.81	4.76	5.72	6.35	7.15	8.58	10.30	11.45			
		90	110	60	kgfcm	12.2	18.2	21.9	30.4	36.5	45.6	54.7	60.8	68.4	82.1	98.6	109.5
					N.m	1.19	1.79	2.14	2.98	3.57	4.47	5.36	5.95	6.71	8.05	9.66	10.73
kgfcm	5.8				8.7	10.5	14.6	17.5	21.9	26.2	29.2	32.9	39.4	47.3	52.6		
N.m	0.57	0.86	1.03	1.43	1.71	2.14	2.57	2.86	3.22	3.86	4.64	5.15					
220/240	220	60	kgfcm	5.3	8.0	9.6	13.4	16.0	20.0	24.1	26.7	30.1	36.1	43.4	48.2		
			N.m	0.52	0.79	0.94	1.31	1.57	1.96	2.36	2.62	2.95	3.54	4.25	4.72		
			kgfcm	5.3	8.0	9.6	13.4	16.0	20.0	24.1	26.7	30.1	36.1	43.4	48.2		
N.m	0.52	0.79	0.94	1.31	1.57	1.96	2.36	2.62	2.95	3.54	4.25	4.72					

Motor Model	Gearbox Model	회전 속도 r/min	전압 V	주파수 Hz	감속비	25	30	36	40	50	60	75	90	100	120	150	180	200			
9SRDG*-120F2P	9PBK □ BH 9PFK □ BH	1200	110	60	kgfcm	135.3	162.4	194.8	200.0	200.0	200.0	200.0	200.0	200.0	200.0	200.0	200.0	200.0	200.0		
					N.m	13.26	15.91	19.09	19.60	19.60	19.60	19.60	19.60	19.60	19.60	19.60	19.60	19.60	19.60	19.60	19.60
			220	60	kgfcm	132.0	158.4	190.1	200.0	200.0	200.0	200.0	200.0	200.0	200.0	200.0	200.0	200.0	200.0	200.0	200.0
					N.m	12.94	15.52	18.63	19.60	19.60	19.60	19.60	19.60	19.60	19.60	19.60	19.60	19.60	19.60	19.60	19.60
			220/240	50	kgfcm	123.8	148.5	178.2	198.0	200.0	200.0	200.0	200.0	200.0	200.0	200.0	200.0	200.0	200.0	200.0	200.0
					N.m	12.13	14.55	17.46	19.40	19.60	19.60	19.60	19.60	19.60	19.60	19.60	19.60	19.60	19.60	19.60	19.60
		90	110	60	kgfcm	59.4	71.3	85.5	95.0	118.8	142.6	159.3	191.2	200.0	200.0	200.0	200.0	200.0	200.0	200.0	
					N.m	5.82	6.99	8.38	9.31	11.64	13.97	15.61	18.73	19.60	19.60	19.60	19.60	19.60	19.60	19.60	
			220	60	kgfcm	54.5	65.3	78.4	87.1	108.9	130.7	146.0	175.2	194.7	200.0	200.0	200.0	200.0	200.0	200.0	
					N.m	5.34	6.40	7.68	8.54	10.67	12.81	14.31	17.17	19.08	19.60	19.60	19.60	19.60	19.60	19.60	
			220/240	50	kgfcm	54.5	65.3	78.4	87.1	108.9	130.7	146.0	175.2	194.7	200.0	200.0	200.0	200.0	200.0	200.0	
					N.m	5.34	6.40	7.68	8.54	10.67	12.81	14.31	17.17	19.08	19.60	19.60	19.60	19.60	19.60	19.60	

- 1) 모터 모델명 □ 안에는 전압코드가 들어갑니다.
- 2) 감속기 모델명 □ 안에는 감속비가 들어갑니다.
- 3) 위의 표에서 색칠된 범위의 감속비를 선택했을 때 감속기의 출력축은 모터의 출력축과 같은 방향으로 회전합니다.  
흰색 바탕 범위의 감속비에서는 감속기 출력축은 모터 출력축의 회전방향과 반대방향으로 회전합니다.
- 4) 회전속도(r/min)는 모터의 동기회전속도(50Hz:1500r/min, 60Hz:1800r/min)를 감속비로 나누어 계산합니다. 실제 회전속도는 부하의 크기에 따라 표시보다 2~20% 정도 느립니다.

# B AC Motors

S.C. Reversible Motor 120W (□90mm)

## 감속기 부착 시 최대허용토크

Motor Model	Gear box Model	회전 속도 r/min	전압 V	주파수 Hz	감속비	3	3.6	5	6	7.5	9	10	12.5	15	18	20	25
9SRDG*~120F2H	9HBK □ BH	1200	110	60	kgfcm N,m	19.9 1.95	23.9 2.34	33.2 3.25	39.9 3.91	49.8 4.88	59.8 5.86	66.4 6.51	74.8 7.33	89.8 8.80	107.7 10.56	119.7 11.73	135.3 13.26
			220	60	kgfcm N,m	19.4 1.91	23.3 2.29	32.4 3.18	38.9 3.81	48.6 4.76	58.3 5.72	64.8 6.35	73.0 7.15	87.6 8.58	105.1 10.30	116.8 11.45	132.0 12.94
			220/240	50	kgfcm N,m	18.2 1.79	21.9 2.14	30.4 2.98	36.5 3.57	45.6 4.47	54.7 5.36	60.8 5.95	68.4 6.71	82.1 8.05	98.6 9.66	109.5 10.73	123.8 12.13
	9HFK □ BH	90	110	60	kgfcm N,m	8.7 0.86	10.5 1.03	14.6 1.43	17.5 1.71	21.9 2.14	26.2 2.57	29.2 2.86	32.9 3.22	39.4 3.86	47.3 4.64	52.6 5.15	59.4 5.82
			220	60	kgfcm N,m	8.0 0.79	9.6 0.94	13.4 1.31	16.0 1.57	20.0 1.96	24.1 2.36	26.7 2.62	30.1 2.95	36.1 3.54	43.4 4.25	48.2 4.72	54.5 5.34
			220/240	50	kgfcm N,m	8.0 0.79	9.6 0.94	13.4 1.31	16.0 1.57	20.0 1.96	24.1 2.36	26.7 2.62	30.1 2.95	36.1 3.54	43.4 4.25	48.2 4.72	54.5 5.34

Motor Model	Gear box Model	회전 속도 r/min	전압 V	주파수 Hz	감속비	30	36	40	50	60	75	90	100	120	150	180	200
9SRDG*~120F2H	9HBK □ BH	1200	110	60	kgfcm N,m	162.4 15.91	194.8 19.09	216.5 21.22	270.6 26.52	300.0 29.40	300.0 29.40	300.0 29.40	300.0 29.40	300.0 29.40	300.0 29.40	300.0 29.40	300.0 29.40
			220	60	kgfcm N,m	158.4 15.52	190.1 18.63	211.2 20.70	264.0 25.87	300.0 29.40	300.0 29.40	300.0 29.40	300.0 29.40	300.0 29.40	300.0 29.40	300.0 29.40	300.0 29.40
			220/240	50	kgfcm N,m	148.5 14.55	178.2 17.46	198.0 19.40	247.5 24.26	297.0 29.11	300.0 29.40	300.0 29.40	300.0 29.40	300.0 29.40	300.0 29.40	300.0 29.40	300.0 29.40
	9HFK □ BH	90	110	60	kgfcm N,m	71.3 6.99	85.5 8.38	95.0 9.31	118.8 11.64	142.6 13.97	159.3 15.61	191.2 18.73	212.4 20.82	254.9 24.98	300.0 29.40	300.0 29.40	300.0 29.40
			220	60	kgfcm N,m	65.3 6.40	78.4 7.68	87.1 8.54	108.9 10.67	130.7 12.81	146.0 14.31	175.2 17.17	194.7 19.08	233.6 22.90	292.1 28.62	300.0 29.40	300.0 29.40
			220/240	50	kgfcm N,m	65.3 6.40	78.4 7.68	87.1 8.54	108.9 10.67	130.7 12.81	146.0 14.31	175.2 17.17	194.7 19.08	233.6 22.90	292.1 28.62	300.0 29.40	300.0 29.40

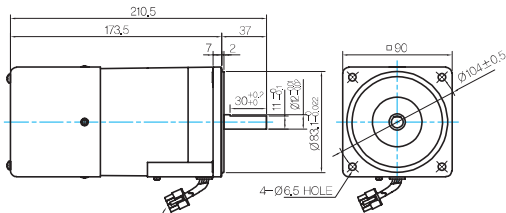
Motor Model	Gearbox Model	회전 속도 r/min	전압 V	주파수 Hz	감속비	10	12	15	18	25	30	36	50	60
9SRDG*~120F2W	9WD □ BL/□ BR/□ BRL	1200	110	60	kgfcm N,m	67.2 6.59	78.7 7.71	94.7 9.28	109.2 10.70	143.5 14.06	162.4 15.91	153.1 15.00	142.9 14.00	122.4 12.00
			220	60	kgfcm N,m	65.6 6.43	76.8 7.53	92.4 9.06	106.6 10.44	140.0 13.72	158.4 15.52	153.1 15.00	142.9 14.00	122.4 12.00
			220/240	50	kgfcm N,m	61.5 6.03	72.0 7.06	86.6 8.49	99.9 9.79	131.3 12.86	148.5 14.55	153.1 15.00	142.9 14.00	122.4 12.00
		90	110	60	kgfcm N,m	29.5 2.89	34.6 3.39	41.6 4.07	48.0 4.70	63.0 6.17	71.3 6.99	82.9 8.13	108.0 10.58	122.4 12.00
			220	60	kgfcm N,m	27.1 2.65	31.7 3.10	38.1 3.74	44.0 4.31	57.8 5.66	65.3 6.40	76.0 7.45	99.0 9.70	122.4 12.00
			220/240	50	kgfcm N,m	27.1 2.65	31.7 3.10	38.1 3.74	44.0 4.31	57.8 5.66	65.3 6.40	76.0 7.45	99.0 9.70	122.4 12.00

Motor Model	Gearbox Model	회전 속도 r/min	전압 V	주파수 Hz	감속비	5	7.5	10	15	20	25	30	40	50	60	80
9SRDG*~120F2WH	9WHD □	1200	110	60	kgfcm N,m	28.5 2.80	41.3 4.05	53.1 5.21	74.8 7.33	94.5 9.26	108.2 10.61	126.0 12.34	154.8 15.17	173.5 17.00	163.3 16.00	132.7 13.00
			220	60	kgfcm N,m	27.8 2.73	40.3 3.95	51.8 5.08	73.0 7.15	92.2 9.03	105.6 10.35	122.9 12.04	151.0 14.80	173.5 17.00	163.3 16.00	132.7 13.00
			220/240	50	kgfcm N,m	27.8 2.73	40.3 3.95	51.8 5.08	73.0 7.15	92.2 9.03	105.6 10.35	122.9 12.04	151.0 14.80	173.5 17.00	163.3 16.00	132.7 13.00
		90	110	60	kgfcm N,m	12.5 1.23	18.1 1.78	23.3 2.29	32.8 3.22	41.5 4.06	47.5 4.66	55.3 5.42	68.0 6.66	77.8 7.62	86.4 8.47	101.4 9.93
			220	60	kgfcm N,m	11.5 1.13	16.6 1.63	21.4 2.10	30.1 2.95	38.0 3.73	43.6 4.27	50.7 4.97	62.3 6.11	71.3 6.99	79.2 7.76	92.9 9.11
			220/240	50	kgfcm N,m	13.2 1.30	19.2 1.88	24.6 2.41	34.7 3.40	43.8 4.29	50.2 4.92	58.4 5.72	71.7 7.03	82.1 8.04	91.2 8.94	107.0 10.49

## Dimensions

### MOTOR ONLY

- MOTOR MODEL:  
9SRDD□-120F2 (POWERFUL FAN)

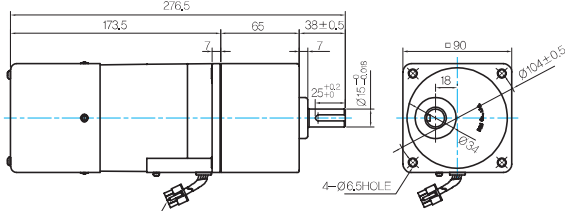


LEAD WIRE ASS Y 300mm  
MOTOR UL STYLE NO,3271 AWG No,20  
T,G UL STYLE NO,1007 AWG No,22

### GEARED MOTOR

#### P TYPE GEARBOX

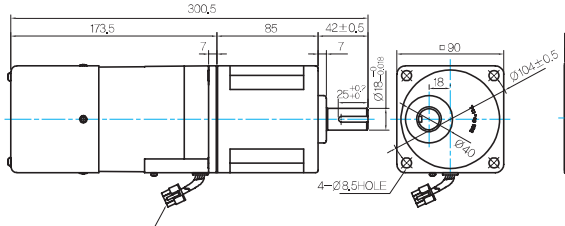
- MOTOR MODEL:  
9SRDG□-120F2P (POWERFUL FAN)



LEAD WIRE ASS Y 300mm  
MOTOR UL STYLE NO,3271 AWG No,20  
T,G UL STYLE NO,1007 AWG No,22

#### H TYPE GEARBOX

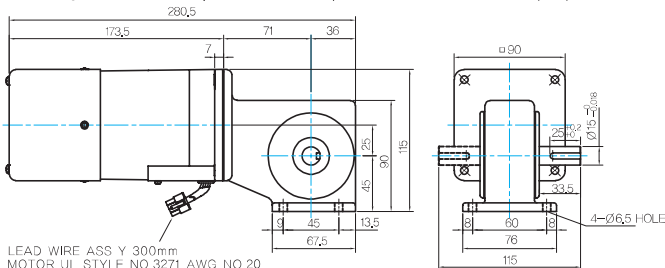
- MOTOR MODEL:  
9SRDG□-120F2H (POWERFUL FAN)



LEAD WIRE ASS Y 300mm  
MOTOR UL STYLE NO,3271 AWG No,20  
T,G UL STYLE NO,1007 AWG No,22

#### W TYPE GEARBOX

- MOTOR MODEL:  
9SRDG□-120F2W (POWERFUL FAN)

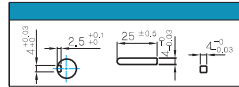


LEAD WIRE ASS Y 300mm  
MOTOR UL STYLE NO,3271 AWG No,20  
T,G UL STYLE NO,1007 AWG No,22

### MOTOR OUTPUT SHAFT

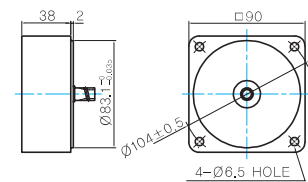
MODEL	SPEC
D-CUT TYPE	
9SRDD□-120F2	
KEY TYPE	
9SRDK□-120F2	

### KEY SPEC



### 중간감속기

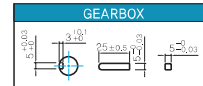
- MODEL: 9XD10□□



### GEARBOX OUTPUT SHAFT

MODEL	SPEC
KEY TYPE	
9PBK□BH	
9PFK□BH	

### KEY SPEC



### GEARBOX OUTPUT SHAFT

MODEL	SPEC
KEY TYPE	
9HBK□BH	
9HFK□BH	

### KEY SPEC



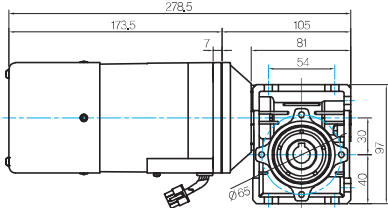
# B AC Motors

S.C. Reversible Motor 120W (□90mm)

## Dimensions

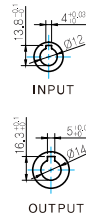
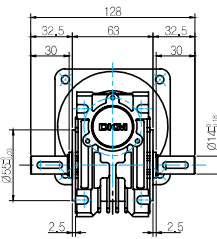
### WH TYPE GEARBOX

MOTOR MODEL:  
9SRDG□-120F2WH (POWERFUL FAN)

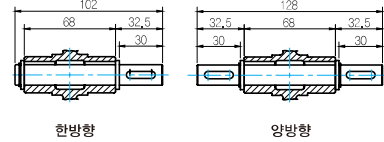


LEAD WIRE ASS'Y 300mm  
MOTOR UL STYLE NO.3271 AWG NO.20  
T.G UL STYLE NO.1007 AWG No.22

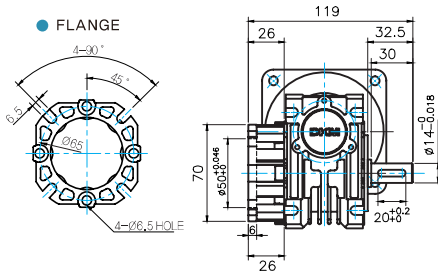
GEARBOX MODEL:  
9WHD□-030



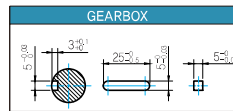
SHAFT



FLANGE



KEY SPEC



### WEIGHT

PART		WEIGHT(Kg)
MOTOR		3.5
GEAR BOX	9PB(F)K2BH - 9PB(F)K10BH	1.26
	9PB(F)K12.5BH - 9PB(F)K20BH	1.3
	9PB(F)K25BH - 9PB(F)K60BH	1.45
	9PB(F)K75BH - 9PB(F)K200BH	1.47
	9HB(F)K3BH - 9HB(F)K10BH	1.62
	9HB(F)K12.5BH - 9HB(F)K20BH	1.68
	9HB(F)K25BH - 9HB(F)K60BH	1.73
	9HB(F)K75BH - 9HB(F)K200BH	1.78
	9WD□BL/BR/BRL	1.0
	9WHD□-030	1.2
9XD10□□	0.6	

\* 출력 FLANGE와 SHAFT는 별매입니다.

## Motor Images

