

S.C. Reversible Motor 60W (□90mm)

60W

Speed Control
Reversible Motor
60W(□90mm)

Motor Specification

Model 9SRDG*-60F2□: Gear Type Shaft 9SRDD*-60F2: D-Cut Type Shaft 9SRDK*-60F2: Key Type Shaft	Output W	Voltage V	Frequency Hz	Poles	Duty	Speed Range r/min	Starting Torque kgfcm N.m		Permissible Torque				Capacitor μF / VAC
									1200r/min		90r/min		
									kgfcm	N.m	kgfcm	N.m	
9SRDGA-60F2□	60	1∅110	60	4	30min.	90-1700	3.20	0.320	6.10	0.610	2.80	0.280	20.0 / 250
9SRDGD-60F2□	60	1∅220	60	4	30min.	90-1700	3.80	0.380	6.50	0.650	3.00	0.300	5.0 / 400
9SRDGE-60F2□	60	1∅220	50	4	30min.	90-1400	5.20	0.520	5.20	0.520	1.00	0.100	5.0 / 400
		1∅240					5.80	0.580	5.80	0.580	1.00	0.100	

1) Enter the phase & voltage code in the place * and enter the model type of attaching Gearbox in the box (□) within the motor model name.

2) All models contain a built-in thermal protector.

3) Gear Type Shaft are for attaching Gearbox and D-Cut & Key Type Shaft are for using motor only.

Max. Permissible Torque at Output Shaft of Gearbox

Motor Model	Gearbox Model	r/min	V	Hz	Gear Ratio	2	3	3.6	5	6	7.5	9	12.5	15	18	20
9SRDG□ -60F2P	9PBK□BH 9PFK□BH	1200	110	60	kgfcm N.m	10.1 0.99	15.2 1.49	18.2 1.79	25.3 2.48	30.4 2.98	38.0 3.72	45.6 4.47	57.2 5.60	68.6 6.73	82.4 8.07	83.0 8.13
			220	60	kgfcm N.m	10.8 1.06	16.2 1.59	19.4 1.90	27.0 2.64	32.4 3.17	40.5 3.97	48.6 4.76	60.9 5.97	73.1 7.17	87.8 8.60	88.4 8.66
			220/ 240	50	kgfcm N.m	9.6 0.94	14.4 1.42	17.3 1.70	24.1 2.36	28.9 2.83	36.1 3.54	43.3 4.25	54.4 5.33	65.3 6.39	78.3 7.67	78.9 7.73
		90	110	60	kgfcm N.m	4.6 0.46	7.0 0.68	8.4 0.82	11.6 1.14	13.9 1.37	17.4 1.71	20.9 2.05	26.3 2.57	31.5 3.09	37.8 3.70	38.1 3.73
			220	60	kgfcm N.m	5.0 0.49	7.5 0.73	9.0 0.88	12.5 1.22	14.9 1.46	18.7 1.83	22.4 2.20	28.1 2.76	33.8 3.31	40.5 3.97	40.8 4.00
			220/ 240	50	kgfcm N.m	1.7 0.16	2.5 0.24	3.0 0.29	4.2 0.41	5.0 0.49	6.2 0.61	7.5 0.73	9.4 0.92	11.3 1.10	13.5 1.32	13.6 1.33

Motor Model	Gearbox Model	r/min	V	Hz	Gear Ratio	25	30	36	40	50	60	75	90	100	120	150	180	200
9SRDG□ -60F2P	9PBK□BH 9PFK□BH	1200	110	60	kgfcm N.m	103.7 10.16	124.4 12.20	149.3 14.63	165.9 16.26	200.0 19.60	200.0 19.60	200.0 19.60	200.0 19.60	200.0 19.60	200.0 19.60	200.0 19.60	200.0 19.60	200.0 19.60
			220	60	kgfcm N.m	110.5 10.83	132.6 12.99	159.1 15.59	176.8 17.33	200.0 19.60	200.0 19.60	200.0 19.60	200.0 19.60	200.0 19.60	200.0 19.60	200.0 19.60	200.0 19.60	200.0 19.60
			220/ 240	50	kgfcm N.m	98.6 9.66	118.3 11.60	142.0 13.91	157.8 15.46	197.2 19.33	200.0 19.60	200.0 19.60	200.0 19.60	200.0 19.60	200.0 19.60	200.0 19.60	200.0 19.60	200.0 19.60
		90	110	60	kgfcm N.m	47.6 4.66	57.1 5.60	68.5 6.72	76.2 7.46	95.2 9.33	114.2 11.20	128.1 12.55	153.7 15.06	170.8 16.74	200.0 19.60	200.0 19.60	200.0 19.60	200.0 19.60
			220	60	kgfcm N.m	51.0 5.00	61.2 6.00	73.4 7.20	81.6 8.00	102.0 10.00	122.4 12.00	137.3 13.45	164.7 16.14	183.0 17.93	200.0 19.60	200.0 19.60	200.0 19.60	200.0 19.60
			220/ 240	50	kgfcm N.m	17.0 1.67	20.4 2.00	24.5 2.40	27.2 2.67	34.0 3.33	40.8 4.00	45.8 4.48	54.9 5.38	61.0 5.98	73.2 7.17	91.5 8.97	109.8 10.76	109.8 10.76

1) Enter the phase & voltage code in the box (□) within the motor model name.

2) Enter the gear ratio in the box (□) within the Gearbox model name.

3) A colored background indicates gear shaft rotation in the same direction as the motor shaft; a white background indicates rotation in the opposite direction.

4) The rotating speed is calculated by dividing the motor's synchronous speed (50Hz: 1,500r/min, 60Hz: 1,800r/min) by the gear ratio.

The actual speed is 2-20% less than the displayed value, depending on the size of the load.

B AC Motors

S.C. Reversible Motor 60W (□90mm)

Max. Permissible Torque at Output Shaft of Gearbox

Motor Model	Gearbox Model	r/min	V	Hz	Gear Ratio	3	3.6	6	9	12.5	15	18	20	25	30	36	50	60	75	90	100	120	150	180	200
9SRDG□ -60F2H	9HBK□ BH	1200	110	60	kgfcm N.m	15.2 1.49	18.2 1.79	30.4 2.98	45.6 4.47	57.2 5.60	68.6 6.73	82.4 8.07	83.0 8.13	103.7 10.16	124.4 12.20	149.3 14.63	207.4 20.33	248.9 24.39	279.1 27.35	300.0 29.40	300.0 29.40	300.0 29.40	300.0 29.40	300.0 29.40	300.0 29.40
			220	60	kgfcm N.m	16.2 1.59	19.4 1.90	32.4 3.17	48.6 4.76	60.9 5.97	73.1 7.17	87.8 8.60	88.4 8.66	110.5 10.83	132.6 12.99	159.1 15.59	221.0 21.66	265.2 25.99	297.4 29.14	300.0 29.40	300.0 29.40	300.0 29.40	300.0 29.40	300.0 29.40	300.0 29.40
			220/240	50	kgfcm N.m	14.4 1.42	17.3 1.70	28.9 2.83	43.3 4.25	54.4 5.33	65.3 6.39	78.3 7.67	78.9 7.73	98.6 9.66	118.3 11.60	142.0 13.91	197.2 19.33	236.6 23.19	265.4 26.00	300.0 29.40	300.0 29.40	300.0 29.40	300.0 29.40	300.0 29.40	300.0 29.40
		90	110	60	kgfcm N.m	7.0 0.68	8.4 0.82	13.9 1.37	20.9 2.05	26.3 2.57	31.5 3.09	37.8 3.70	38.1 3.73	47.6 4.66	57.1 5.60	68.5 6.72	95.2 9.33	114.2 11.20	128.1 12.55	153.7 15.06	170.8 16.74	205.0 20.09	256.2 25.11	300.0 29.40	300.0 29.40
			220	60	kgfcm N.m	7.5 0.73	9.0 0.88	14.9 1.46	22.4 2.20	28.1 2.76	33.8 3.31	40.5 3.97	40.8 4.00	51.0 5.00	61.2 6.00	73.4 7.20	102.0 10.00	122.4 12.00	137.3 13.45	164.7 16.14	183.0 17.93	219.6 21.52	274.5 26.90	300.0 29.40	300.0 29.40
			220/240	50	kgfcm N.m	2.5 0.24	3.0 0.29	5.0 0.49	7.5 0.73	9.4 0.92	11.3 1.10	13.5 1.32	13.6 1.33	17.0 1.67	20.4 2.00	24.5 2.40	34.0 3.33	40.8 4.00	45.8 4.48	54.9 5.38	61.0 5.98	73.2 7.17	91.5 8.97	109.8 10.76	109.8 10.76

Motor Model	Gearbox Model	r/min	V	Hz	Gear Ratio	10	12	15	18	25	30	36	50	60
9SRDG□ -60F2W	9WD□BL/ □BR/□BRL	1200	110	60	kgfcm N.m	50.0 4.90	58.6 5.74	70.5 6.90	81.3 7.96	106.8 10.46	120.8 11.84	140.5 13.77	142.9 14.00	122.4 12.00
			220	60	kgfcm N.m	53.3 5.22	62.4 6.12	75.1 7.36	86.6 8.48	113.8 11.15	128.7 12.61	149.8 14.68	142.9 14.00	122.4 12.00
			220/240	50	kgfcm N.m	47.6 4.66	55.7 5.46	67.0 6.57	77.3 7.57	101.5 9.95	114.8 11.25	133.6 13.10	142.9 14.00	122.4 12.00
		90	110	60	kgfcm N.m	23.0 2.25	26.9 2.63	32.3 3.17	37.3 3.66	49.0 4.80	55.4 5.43	64.5 6.32	84.0 8.23	92.4 9.06
			220	60	kgfcm N.m	24.6 2.41	28.8 2.82	34.7 3.40	40.0 3.92	52.5 5.15	59.4 5.82	69.1 6.77	90.0 8.82	99.0 9.70
			220/240	50	kgfcm N.m	8.2 0.80	9.6 0.94	11.6 1.13	13.3 1.31	17.5 1.72	19.8 1.94	23.0 2.26	30.0 2.94	33.0 3.23

Motor Model	Gearbox Model	r/min	V	Hz	Gear Ratio	7.5	10	15	20	25	30	40	50	60	80
9SRDG□ -60F2WH	9WHD□-030	1200	110	60	kgfcm N.m	38.4 3.77	49.4 4.84	69.5 6.81	87.8 8.61	100.7 9.86	117.1 11.48	144.0 14.11	164.7 16.14	163.3 16.00	132.7 13.00
			220	60	kgfcm N.m	41.0 4.01	52.7 5.16	74.1 7.26	93.6 9.17	107.3 10.51	124.8 12.23	153.4 15.03	173.5 17.00	163.3 16.00	132.7 13.00
			220/240	50	kgfcm N.m	36.5 3.58	47.0 4.60	66.1 6.48	83.5 8.18	95.7 9.38	111.4 10.91	136.9 13.41	156.6 15.35	163.3 16.00	132.7 13.00
		90	110	60	kgfcm N.m	17.6 1.73	22.7 2.22	31.9 3.13	40.3 3.95	46.2 4.53	53.8 5.27	66.1 6.48	75.6 7.41	84.0 8.23	98.6 9.66
			220	60	kgfcm N.m	18.9 1.85	24.3 2.38	34.2 3.35	43.2 4.23	49.5 4.85	57.6 5.64	70.8 6.94	81.0 7.94	90.0 8.82	105.6 10.35
			220/240	50	kgfcm N.m	6.3 0.62	8.1 0.79	11.4 1.12	14.4 1.41	16.5 1.62	19.2 1.88	23.6 2.31	27.0 2.65	30.0 2.94	35.2 3.45

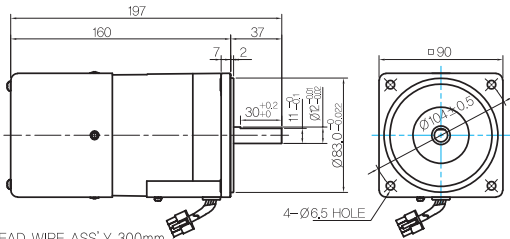
Motor Images



Dimensions

MOTOR ONLY

- MOTOR MODEL:
9SRDD□-60F2 (POWERFUL FAN)

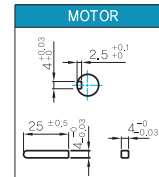


LEAD WIRE ASS'Y 300mm
MOTOR UL STYLE NO,3271 AWG NO,22
T,G UL STYLE NO,1430 AWG NO,24

- MOTOR OUTPUT SHAFT

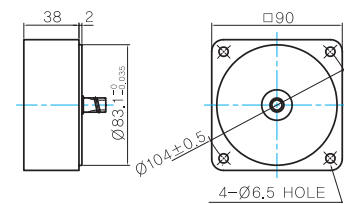
MODEL	SPEC
D-CUT TYPE	
KEY TYPE	
9SRDK□-60F2	

- KEY SPEC



INTER-DECIMAL GEARBOX

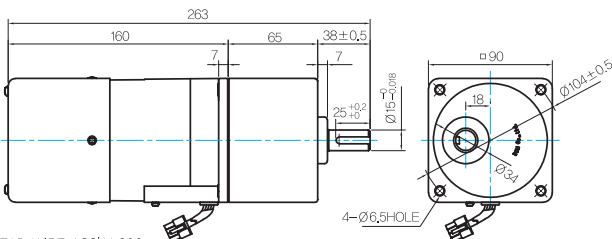
- MODEL: 9XD10□□



GEARED MOTOR

P TYPE GEARBOX

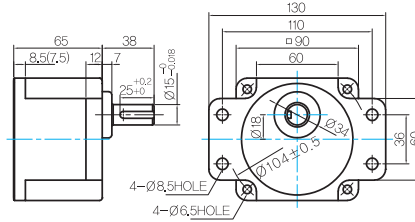
- MOTOR MODEL:
9SRDG□-60F2P (POWERFUL FAN)



LEAD WIRE ASS'Y 300mm
MOTOR UL STYLE NO,3271 AWG NO,22
T,G UL STYLE NO,1430 AWG NO,24

- GEARBOX MODEL:
9PBK□BH

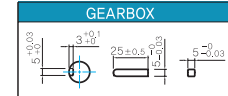
- GEARBOX MODEL:
9PFK□BH



- GEARBOX OUTPUT SHAFT

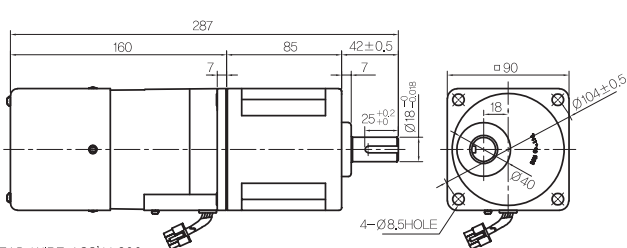
MODEL	SPEC
KEY TYPE	
9PBK□BH	
9PFK□BH	

- KEY SPEC



H TYPE GEARBOX

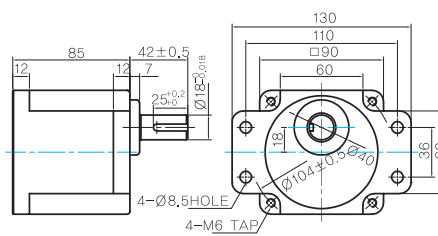
- MOTOR MODEL:
9SRDG□-60F2H (POWERFUL FAN)



LEAD WIRE ASS'Y 300mm
MOTOR UL STYLE NO,3271 AWG NO,22
T,G UL STYLE NO,1430 AWG NO,24

- GEARBOX MODEL:
9HBK□BH

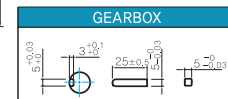
- GEARBOX MODEL:
9HFK□BH



- GEARBOX OUTPUT SHAFT

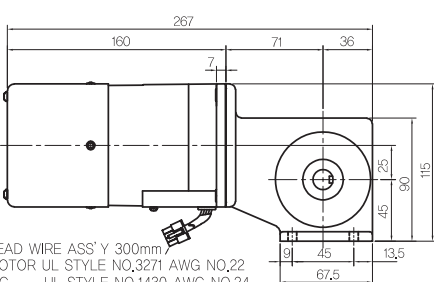
MODEL	SPEC
KEY TYPE	
9HBK□BH	
9HFK□BH	

- KEY SPEC



W TYPE GEARBOX

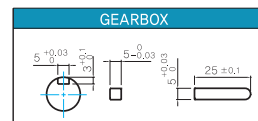
- MOTOR MODEL:
9SRDG□-60F2W (POWERFUL FAN)



LEAD WIRE ASS'Y 300mm
MOTOR UL STYLE NO,3271 AWG NO,22
T,G UL STYLE NO,1430 AWG NO,24

- GEARBOX MODEL:
9WD□BL/BR/BRL

- KEY SPEC



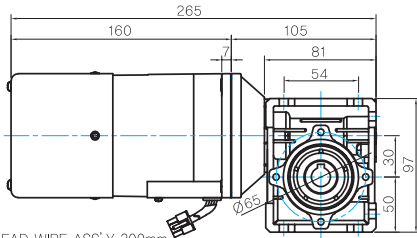
B AC Motors

S.C. Reversible Motor 60W (□90mm)

Dimensions

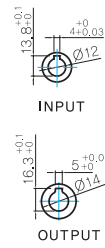
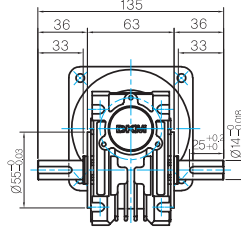
WH TYPE GEARBOX

● MOTOR MODEL:
9SRDG□-60F2WH (POWERFUL FAN)

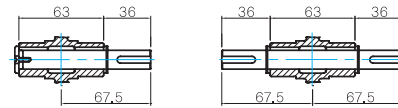


LEAD WIRE ASS'Y 300mm
MOTOR UL STYLE NO,3271 AWG NO,22
T,G UL STYLE NO,1430 AWG NO,24

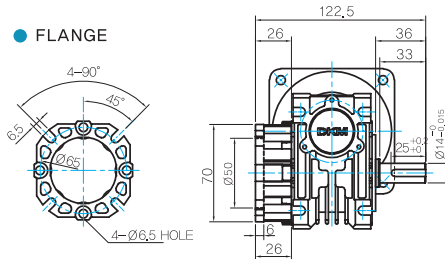
● GEARBOX MODEL:
9WHD□-030



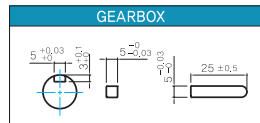
● SHAFT(Unidirectional, Bi-directional)



● FLANGE



● KEY SPEC



* The output flange and shafts are sold separately.

WEIGHT

PART		WEIGHT(Kg)
MOTOR		2,7
GEAR BOX	9PB(F)K2BH ~ 9PB(F)K18BH	1,3
	9PB(F)K20BH ~ 9PB(F)K200BH	1,4
	9HB(F)K3BH ~ 9HB(F)K9BH	1,45
	9HB(F)K12.5BH ~ 9HB(F)K18BH	1,5
	9HB(F)K20BH ~ 9HB(F)K60BH	1,7
	9HB(F)K75BH ~ 9HB(F)K200BH	1,8
9WD□BL/BR/BRL		1,0
9WHD□-030		1,13
9XD10□		0,5