

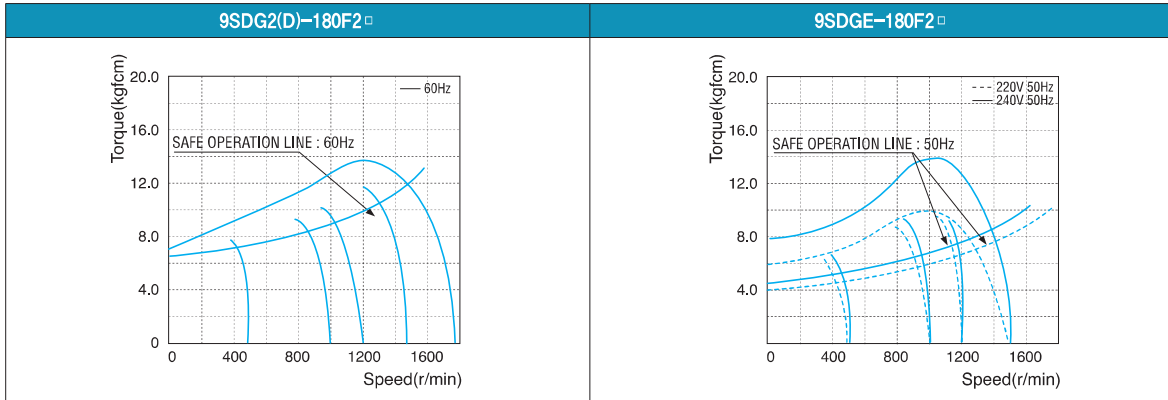
180W Speed Control Induction Motor 180W(□ 90mm)

Motor 사양

Model 9SDG*-180F2 □ : Gear Type Shaft 9SDD*-180F2: D-Cut Type Shaft 9SDK*-180F2: Key Type Shaft	Output W	Voltage V	Frequency Hz	Poles	Duty	Speed Range r/min	Starting Torque		Permissible Torque				Capacitor μF / VAC
							kgfcm	N.m	1200r/min		90r/min		
Lead Wire Type 9SDG1(A)-180F2 □	180	1 φ 110	60	4	Cont.	90-1700	6.40	0.640	10.00	1.000	3.00	0.300	30.0 / 250
9SDG2(D)-180F2 □	180	1 φ 220	60	4	Cont.	90-1700	6.40	0.640	10.00	1.000	3.00	0.300	8.0 / 450
9SDGE-180F2 □	180	1 φ 220	50	4	Cont.	90-1400	6.40	0.640	10.00	1.000	3.00	0.300	8.0 / 450
		7.00					0.700	11.00	1.100	3.30	0.330		

- 1) 모터 모델명 * 자리에는 전압코드가, □ 안에는 부착되는 감속기의 모델 타입명이 들어갑니다.
- 2) 전압코드 A, D, E는 TP(Termal Protector) 부착 사양입니다.
- 3) Gear Type Shaft는 감속기 부착용이며 D-Cut 및 Key Type Shaft는 모터 단독 사용시의 출력축입니다.

회전속도-토크 특성



감속기 부착 시 최대허용토크

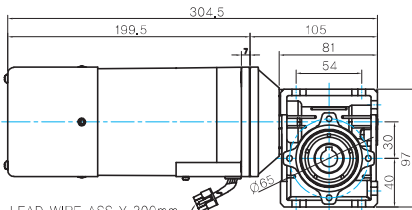
Motor Model	Gear box Model	회전 속도 r/min	전압 V	주파수 Hz	감속비	3	3.6	5	6	7.5	9	10	12.5	15	18	20	25	30	36	40	50	60	75	90	100	120	150	180	200		
9SDG*-180F2H	9HBK □ BH	1200	110	60	kgfcm	24.3	29.2	40.5	48.6	60.8	72.9	81.0	91.3	109.5	131.4	146.0	165.0	198.0	237.6	264.0	300.0	300.0	300.0	300.0	300.0	300.0	300.0	300.0	300.0	300.0	
					N.m	2.38	2.86	3.97	4.76	5.95	7.14	7.94	8.94	10.73	12.88	14.31	16.17	19.40	23.28	25.87	29.40	29.40	29.40	29.40	29.40	29.40	29.40	29.40	29.40	29.40	29.40
		9HFK □ BH	90	110	60	kgfcm	7.3	8.7	12.2	14.6	18.2	21.9	24.3	27.4	32.9	39.4	43.8	49.5	59.4	71.3	79.2	99.0	118.8	132.8	159.3	177.0	212.4	265.5	300.0	300.0	300.0
						N.m	0.71	0.86	1.19	1.43	1.79	2.14	2.38	2.68	3.22	3.86	4.29	4.85	5.82	6.99	7.76	9.70	11.64	13.01	15.61	17.35	20.82	26.02	29.40	29.40	29.40
		9HFK □ BH	90	220	50	kgfcm	7.3	8.7	12.2	14.6	18.2	21.9	24.3	27.4	32.9	39.4	43.8	49.5	59.4	71.3	79.2	99.0	118.8	132.8	159.3	177.0	212.4	265.5	300.0	300.0	300.0
						N.m	0.71	0.86	1.19	1.43	1.79	2.14	2.38	2.68	3.22	3.86	4.29	4.85	5.82	6.99	7.76	9.70	11.64	13.01	15.61	17.35	20.82	26.02	29.40	29.40	29.40

- 1) 모터 모델명 * 자리에는 전압코드가 들어갑니다.
- 2) 감속기 모델명 □ 안에는 감속비가 들어갑니다.
- 3) 위의 표에서 색칠된 범위의 감속비를 선택했을 때 감속기의 출력축은 모터의 출력축과 같은 방향으로 회전합니다. 흰색 바탕 범위의 감속비에서는 감속기 출력축은 모터 출력축의 회전방향과 반대방향으로 회전합니다.
- 4) 회전속도(r/min)는 모터의 동기회전속도(50Hz:1500r/min, 60Hz:1800r/min)를 감속비로 나누어 계산합니다. 실제 회전속도는 부하의 크기에 따라 표시보다 2~20% 정도 느립니다.

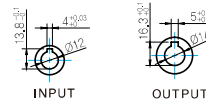
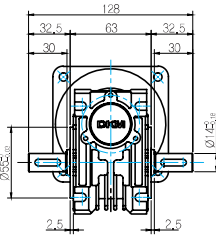
WH TYPE GEARBOX

● MOTOR MODEL:
9SDG□-180F2WH (POWERFUL FAN)

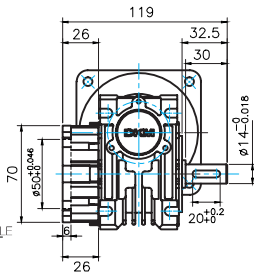
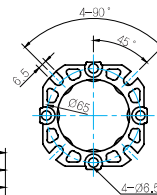
● GEARBOX MODEL:
9WHD□-030



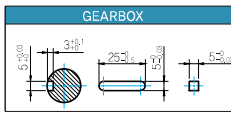
LEAD WIRE ASS Y 300mm
MOTOR UL STYLE NO.3271 AWG No.20
T,G UL STYLE NO.1007 AWG No.22



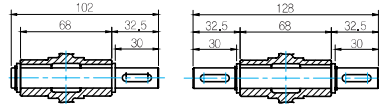
● FLANGE



● KEY SPEC



● SHAFT

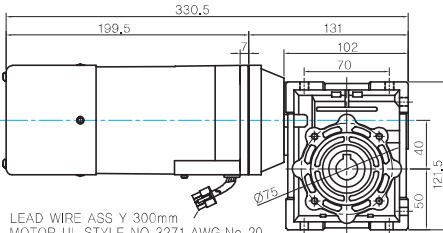


한방향

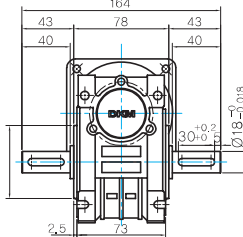
양방향

● MOTOR MODEL:
9SDG□-180F2WH (GENERAL FAN)

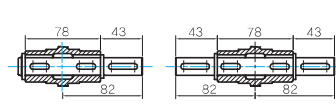
● GEARBOX MODEL:
9WHD□-040



LEAD WIRE ASS Y 300mm
MOTOR UL STYLE NO.3271 AWG No.20
T,G UL STYLE NO.1007 AWG No.22



● SHAFT



한방향

양방향

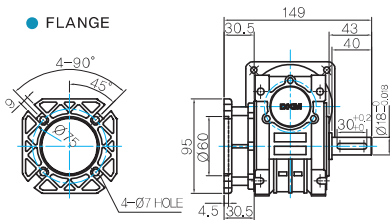


● WEIGHT

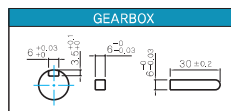
PART		WEIGHT(Kg)
MOTOR		4.25
GEAR BOX	9HB(F)K3BH ~ 9HB(F)K10BH	1.62
	9HB(F)K12.5BH ~ 9HB(F)K20BH	1.68
	9HB(F)K25BH ~ 9HB(F)K60BH	1.73
	9HB(F)K75BH ~ 9HB(F)K200BH	1.78
	9WHD□-030	1.2
	9WHD□-040	2.1
9XD10□□		0.6

* 출력 FLANGE와 SHAFT는 별매입니다.

● FLANGE



● KEY SPEC

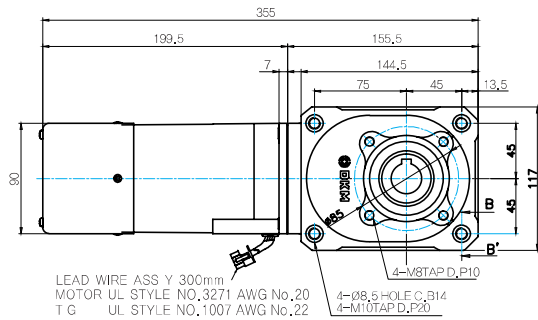


B AC Motors

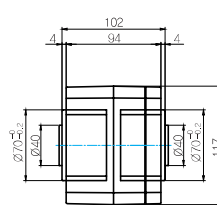
S.C. Induction Motor 180W (□90mm)

HC TYPE GEARBOX

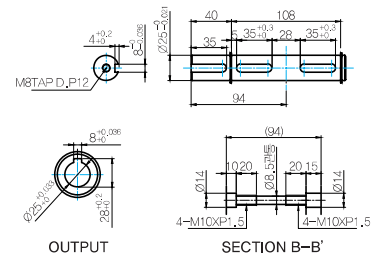
- MOTOR MODEL : 9SDG□-180F2HC-□ (POWERFUL FAN)



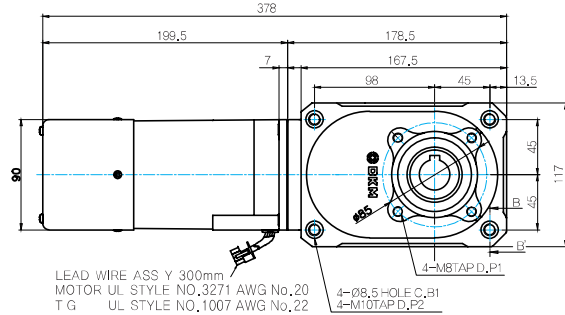
- GEARBOX MODEL: 9HC(15 ~ 60)□



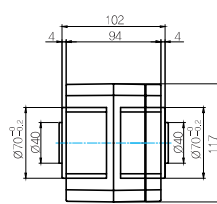
- SHAFT



- MOTOR MODEL : 9SDG□-180F2HC-□ (POWERFUL FAN)



- GEARBOX MODEL : 9HC(80 ~ 240)□

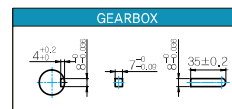


WEIGHT

PART		WEIGHT(Kg)
MOTOR		4,25
GEAR BOX	9HB(F)K3BH - 9HB(F)K10BH	1,62
	9HB(F)K12.5BH - 9HB(F)K20BH	1,68
	9HB(F)K25BH - 9HB(F)K60BH	1,73
	9HB(F)K75BH - 9HB(F)K200BH	1,78
	9WHD□-030	1,2
	9WHD□-040	2,1
	9HC15□	4,05
	9HC20□~9HC60□	4,1
	9HC80□~9HC240□	4,75
	9XD10□	0,6

* 출력 FLANGE와 SHAFT는 별매입니다.

- KEY SPEC



Motor Images

