

S.C. Induction Motor 120W (□ 90mm)

120W

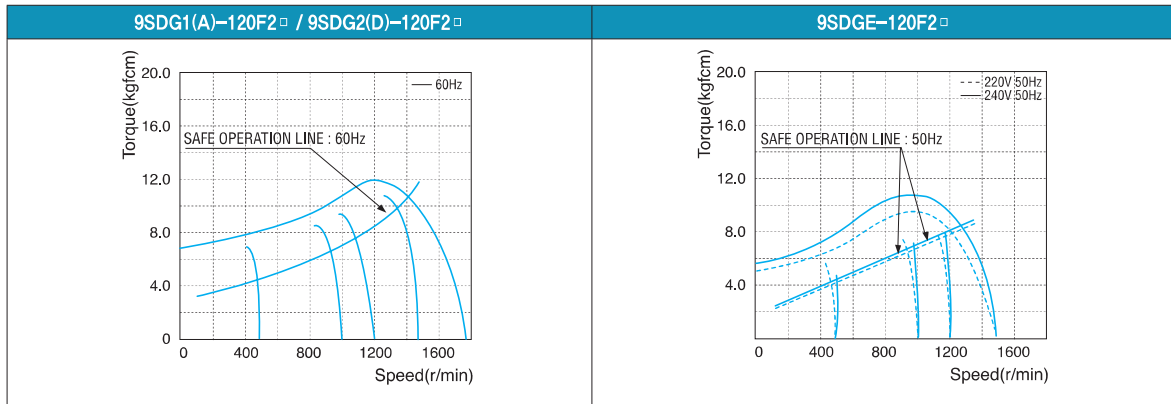
Speed Control Induction Motor 120W(□ 90mm)

Motor 사양

Model 9SDG*-120F2 □ : Gear Type Shaft 9SDD*-120F2: D-Cut Type Shaft 9SDK*-120F2: Key Type Shaft	Output W	Voltage V	Frequency Hz	Poles	Duty	Speed Range r/min	Starting Torque		Permissible Torque				Capacitor μF / VAC
							kgfcm	N.m	1200r/min		90r/min		
9SDG1(A)-120F2 □	120	1 φ 110	60	4	Cont.	90-1700	5.70	0.570	8.30	0.830	2.80	0.280	25.0 / 250
9SDG2(D)-120F2 □	120	1 φ 220	60	4	Cont.	90-1700	5.70	0.570	8.30	0.830	2.80	0.280	6.5 / 450
9SDGE-120F2 □	120	1 φ 220	50	4	Cont.	90-1400	5.70	0.570	8.00	0.800	2.80	0.280	6.5 / 450
		1 φ 240											

- 1) 모터 모델명 * 자리에는 전압코드가, □ 안에는 부착되는 감속기의 모델 타입명이 들어갑니다.
- 2) 전압코드 A, D, E는 TP(Thermal Protector) 부착 사양입니다.
- 3) Gear Type Shaft는 감속기 부착용이며 D-Cut 및 Key Type Shaft는 모터 단독 사용시의 출력축입니다.

회전속도-토크 특성



감속기 부착 시 최대허용토크

Motor Model	Gear box Model	회전 속도 r/min	전압 V	주파 수 Hz	감속비	2	3	3.6	5	6	7.5	9	10	12.5	15	18	20	25	30	36	40	50	60	75	90	100	120	150	180	200			
9SDG*-120F2□	9PBK □ BH	1200	110	60	kgfcm	13.4	20.2	24.2	33.6	40.3	50.4	60.5	67.2	75.7	90.9	109.1	121.2	137.0	164.3	197.2	200.0	200.0	200.0	200.0	200.0	200.0	200.0	200.0	200.0	200.0	200.0		
					N.m	1.32	1.98	2.37	3.29	3.95	4.94	5.93	6.59	7.42	8.91	10.69	11.88	13.42	16.11	19.33	19.60	19.60	19.60	19.60	19.60	19.60	19.60	19.60	19.60	19.60	19.60	19.60	19.60
		90	110	60	kgfcm	4.5	6.8	8.2	11.3	13.6	17.0	20.4	22.7	25.6	30.7	36.8	40.9	46.2	55.4	66.5	73.9	92.4	110.9	123.9	148.7	165.2	198.2	200.0	200.0	200.0	200.0	200.0	
					N.m	0.44	0.67	0.80	1.11	1.33	1.67	2.00	2.22	2.50	3.00	3.61	4.01	4.53	5.43	6.52	7.24	9.06	10.87	12.14	14.57	16.19	19.43	19.60	19.60	19.60	19.60	19.60	
		9PFK □ BH	1200	220/240	50	kgfcm	13.0	19.4	23.3	32.4	38.9	48.6	58.3	64.8	73.0	87.6	105.1	116.8	132.0	158.4	190.1	200.0	200.0	200.0	200.0	200.0	200.0	200.0	200.0	200.0	200.0	200.0	200.0
						N.m	1.27	1.91	2.29	3.18	3.81	4.76	5.72	6.35	7.15	8.58	10.30	11.45	12.94	15.52	18.63	19.60	19.60	19.60	19.60	19.60	19.60	19.60	19.60	19.60	19.60	19.60	19.60
	90		220/240	50	kgfcm	4.5	6.8	8.2	11.3	13.6	17.0	20.4	22.7	25.6	30.7	36.8	40.9	46.2	55.4	66.5	73.9	92.4	110.9	123.9	148.7	165.2	198.2	200.0	200.0	200.0	200.0	200.0	
					N.m	0.44	0.67	0.80	1.11	1.33	1.67	2.00	2.22	2.50	3.00	3.61	4.01	4.53	5.43	6.52	7.24	9.06	10.87	12.14	14.57	16.19	19.43	19.60	19.60	19.60	19.60	19.60	

- 1) 모터 모델명 * 자리에는 전압코드가 들어갑니다.
- 2) 감속기 모델명 □ 안에는 감속비가 들어갑니다.
- 3) 위의 표에서 색칠된 범위의 감속비를 선택했을 때 감속기의 출력축은 모터의 출력축과 같은 방향으로 회전합니다. 흰색 바탕 범위의 감속비에서는 감속기 출력축은 모터 출력축의 회전방향과 반대방향으로 회전합니다.
- 4) 회전속도(r/min)는 모터의 동기회전속도(50Hz:1500r/min, 60Hz:1800r/min)를 감속비로 나누어 계산합니다. 실제 회전속도는 부하의 크기에 따라 표시보다 2~20% 정도 느립니다.

B AC Motors

S.C. Induction Motor 120W (□ 90mm)

Motor Model	Gear box Model	회전속도 r/min	전압 V	주파수 Hz	감속비	3	3.6	5	6	7.5	9	10	12.5	15	18	20	25
9SDG* -120F2H	9HBK □ BH	1200	110	60	kgfcm	20.2	24.2	33.6	40.3	50.4	60.5	67.2	75.7	90.9	109.1	121.2	137.0
					N.m	1.98	2.37	3.29	3.95	4.94	5.93	6.59	7.42	8.91	10.69	11.88	13.42
		220	60	kgfcm	20.2	24.2	33.6	40.3	50.4	60.5	67.2	75.7	90.9	109.1	121.2	137.0	
	220/240	50	kgfcm	19.4	23.3	32.4	38.9	48.6	58.3	64.8	73.0	87.6	105.1	116.8	132.0		
	N.m	1.91	2.29	3.18	3.81	4.76	5.72	6.35	7.15	8.58	10.30	11.45	12.94				
	90	60	kgfcm	6.8	8.2	11.3	13.6	17.0	20.4	22.7	25.6	30.7	36.8	40.9	46.2		
N.m	0.67	0.80	1.11	1.33	1.67	2.00	2.22	2.50	3.00	3.61	4.01	4.53					
220	60	kgfcm	6.8	8.2	11.3	13.6	17.0	20.4	22.7	25.6	30.7	36.8	40.9	46.2			
N.m	0.67	0.80	1.11	1.33	1.67	2.00	2.22	2.50	3.00	3.61	4.01	4.53					
220/240	50	kgfcm	6.8	8.2	11.3	13.6	17.0	20.4	22.7	25.6	30.7	36.8	40.9	46.2			
N.m	0.67	0.80	1.11	1.33	1.67	2.00	2.22	2.50	3.00	3.61	4.01	4.53					

Motor Model	Gear box Model	회전속도 r/min	전압 V	주파수 Hz	감속비	30	36	40	50	60	75	90	100	120	150	180	200
9SDG* -120F2H	9HBK □ BH	1200	110	60	kgfcm	164.3	197.2	219.1	273.9	300.0	300.0	300.0	300.0	300.0	300.0	300.0	300.0
					N.m	16.11	19.33	21.47	26.84	29.40	29.40	29.40	29.40	29.40	29.40	29.40	29.40
		220	60	kgfcm	164.3	197.2	219.1	273.9	300.0	300.0	300.0	300.0	300.0	300.0	300.0	300.0	300.0
	220/240	50	kgfcm	158.4	190.1	211.2	264.0	300.0	300.0	300.0	300.0	300.0	300.0	300.0	300.0	300.0	300.0
	N.m	15.52	18.63	20.70	25.87	29.40	29.40	29.40	29.40	29.40	29.40	29.40	29.40	29.40	29.40	29.40	
	90	60	kgfcm	55.4	66.5	73.9	92.4	110.9	123.9	148.7	165.2	198.2	247.8	297.4	300.0		
N.m	5.43	6.52	7.24	9.06	10.87	12.14	14.57	16.19	19.43	24.28	29.14	29.40					
220	60	kgfcm	55.4	66.5	73.9	92.4	110.9	123.9	148.7	165.2	198.2	247.8	297.4	300.0			
N.m	5.43	6.52	7.24	9.06	10.87	12.14	14.57	16.19	19.43	24.28	29.14	29.40					
220/240	50	kgfcm	55.4	66.5	73.9	92.4	110.9	123.9	148.7	165.2	198.2	247.8	297.4	300.0			
N.m	5.43	6.52	7.24	9.06	10.87	12.14	14.57	16.19	19.43	24.28	29.14	29.40					

Motor Model	Gearbox Model	회전속도 r/min	전압 V	주파수 Hz	감속비	10	12	15	18	25	30	36	50	60
9SDG* -120F2W	9WD □ BL/□ BR/□ BRL	1200	110	60	kgfcm	68.1	79.7	95.9	110.6	145.3	164.3	153.1	142.9	122.4
					N.m	6.67	7.81	9.39	10.83	14.23	16.11	15.00	14.00	12.00
		220	60	kgfcm	68.1	79.7	95.9	110.6	145.3	164.3	153.1	142.9	122.4	122.4
	220/240	50	kgfcm	65.6	76.8	92.4	106.6	140.0	158.4	153.1	142.9	122.4	122.0	
	N.m	6.43	7.53	9.06	10.44	13.72	15.52	15.00	14.00	12.00				
	90	60	kgfcm	23.0	26.9	32.3	37.3	49.0	55.4	64.5	84.0	122.4	122.4	
N.m	2.25	2.63	3.17	3.66	4.80	5.43	6.32	8.23	12.00					
220	60	kgfcm	23.0	26.9	32.3	37.3	49.0	55.4	64.5	84.0	122.4	122.4		
N.m	2.25	2.63	3.17	3.66	4.80	5.43	6.32	8.23	12.00					
220/240	50	kgfcm	23.0	26.9	32.3	37.3	49.0	55.4	64.5	84.0	122.4	122.4		
N.m	2.25	2.63	3.17	3.66	4.80	5.43	6.32	8.23	12.00					

Motor Model	Gearbox Model	회전속도 r/min	전압 V	주파수 Hz	감속비	5	7.5	10	15	20	25	30	40	50	60	80
9SDG* -120F2WH	9WHD □	1200	110	60	kgfcm	28.9	41.8	53.8	75.7	95.6	109.6	127.5	156.7	173.5	163.3	132.7
					N.m	2.83	4.10	5.27	7.42	9.37	10.74	12.49	15.36	17.00	16.00	13.00
		220	60	kgfcm	28.9	41.8	53.8	75.7	95.6	109.6	127.5	156.7	173.5	163.3	132.7	
	220/240	50	kgfcm	29.9	43.3	55.7	78.4	99.1	113.5	132.1	162.4	173.5	163.3	132.7		
	N.m	2.93	4.25	5.46	7.69	9.71	11.12	12.95	15.91	17.00	16.00	13.00				
	90	60	kgfcm	9.7	14.1	18.1	25.5	32.3	37.0	43.0	52.9	60.5	67.2	78.8		
N.m	0.95	1.38	1.78	2.50	3.16	3.62	4.21	5.18	5.93	6.59	7.73					
220	60	kgfcm	9.7	14.1	18.1	25.5	32.3	37.0	43.0	52.9	60.5	67.2	78.8			
N.m	0.95	1.38	1.78	2.50	3.16	3.62	4.21	5.18	5.93	6.59	7.73					
220/240	50	kgfcm	10.1	14.6	18.8	26.4	33.4	38.3	44.5	54.8	62.6	69.6	81.7			
N.m	0.99	1.43	1.84	2.59	3.27	3.75	4.37	5.37	6.14	6.82	8.00					

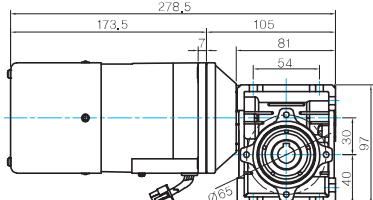
Motor Model	Gearbox Model	회전속도 r/min	전압 V	주파수 Hz	감속비	15	20	25	30	40	50	60	80	100	120	160	200	225	240
9SDG* -120F2HC	9HC □ □	1200	110	60	kgfcm	90.9	121	151	182	242	303	364	485	606	727	969	1212	1363	1454
					N.m	8.91	11.9	14.8	17.8	23.7	29.7	35.7	47.5	59.4	71.2	95	119	134	142
		220	60	kgfcm	90.9	121	151	182	242	303	364	485	606	727	969	1212	1363	1454	
	220/240	50	kgfcm	87.6	117	146	175	234	292	350	467	584	701	934	1168	1314	1402		
	N.m	8.58	11.5	14.3	17.2	22.9	28.6	34.3	45.8	57.2	68.7	91.5	115	129	137				
	90	60	kgfcm	30.7	40.9	51.1	61.3	81.8	102	123	164	204	245	327	409	460	491		
N.m	3.01	4.01	5.01	6.01	8.02	10	12.1	16.1	20	24	32	40.1	45.1	48.1					
220	60	kgfcm	30.7	40.9	51.1	61.3	81.8	102	123	164	204	245	327	409	460	491			
N.m	3.01	4.01	5.01	6.01	8.02	10	12.1	16.1	20	24	32	40.1	45.1	48.1					
220/240	50	kgfcm	30.7	40.9	51.1	61.3	81.8	102	123	164	204	245	327	409	460	491			
N.m	3.01	4.01	5.01	6.01	8.02	10	12.1	16.1	20	24	32	40.1	45.1	48.1					

B AC Motors

S.C. Induction Motor 120W (□ 90mm)

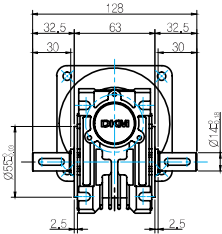
WH TYPE GEARBOX

- MOTOR MODEL : 9SDG□-120F2 WH (POWERFUL FAN)

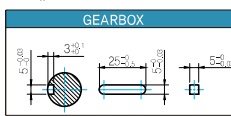


LEAD WIRE ASS'Y 300mm
MOTOR UL STYLE NO.3271 AWG No.20
T.G UL STYLE NO.1007 AWG No.22

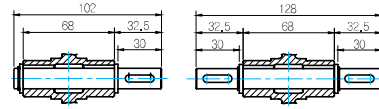
- GEARBOX MODEL : 9WHD□-030



KEY SPEC



- SHAFT

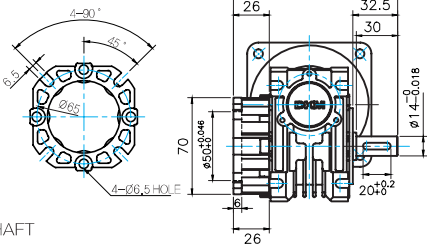


INPUT

한방향

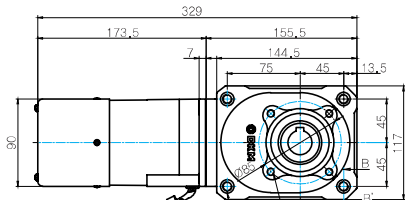
양방향

- FLANGE



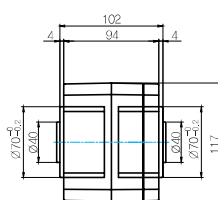
HC TYPE GEARBOX

- MOTOR MODEL : 9SDG□-120F2HC□ (POWERFUL FAN)

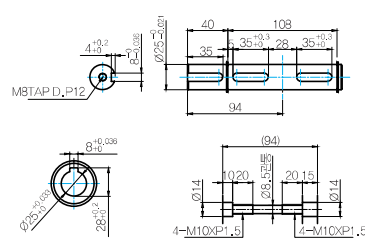


LEAD WIRE ASS'Y 300mm
MOTOR UL STYLE NO.3271 AWG No.20
T.G UL STYLE NO.1007 AWG No.22

- GEARBOX MODEL : 9HC(15 ~ 60)□



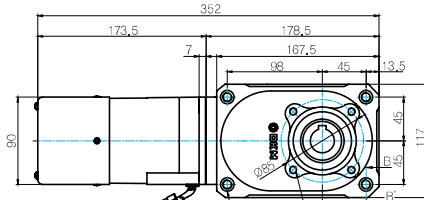
- SHAFT



OUTPUT

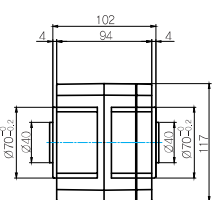
SECTION B-B'

- MOTOR MODEL : 9SDG□-120F2HC□ (POWERFUL FAN)

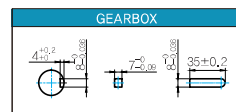


LEAD WIRE ASS'Y 300mm
MOTOR UL STYLE NO.3271 AWG No.20
T.G UL STYLE NO.1007 AWG No.22

- GEARBOX MODEL : 9HC(80 ~ 240)□



KEY SPEC



WEIGHT

PART	WEIGHT(Kg)
MOTOR	3,50
9PB(F)K2BH - 9PB(F)K10BH	1,28
9PB(F)K12.5BH - 9PB(F)K20BH	1,3
9PB(F)K25BH - 9PB(F)K60BH	1,45
9PB(F)K75BH - 9PB(F)K200BH	1,47
9HB(F)K3BH - 9HB(F)K10BH	1,62
9HB(F)K12.5BH - 9HB(F)K20BH	1,68
9HB(F)K25BH - 9HB(F)K60BH	1,73
9HB(F)K75BH - 9HB(F)K200BH	1,78
9WD□BL/BR/BRL	1,0
9WHD□-030	1,2
9HC15□	4,05
9HC20□~9HC60□	4,1
9HC80□~9HC240□	4,75
9XD10□	0,6

* 출력 FLANGE와 SHAFT는 별매입니다.

Motor Images

