

B AC Motors

2 Pole Motor 15W(□ 80mm)

15W

2 Pole Motor
15W(□ 80mm)

Motor 사양

Model		Output	Voltage	Frequency	Poles	Duty	Starting Torque		Rated Load			Capacitor	
8IDD*-15-A(T): D-Cut Type Shaft									Speed	Current	Torque		
Lead Wire Type	Terminal Box Type	W	V	Hz			kgfcm	N.m	r/min	A	kgfcm	N.m	μF / VAC
8IDD1(A)-15-A	8IDD1(A)-15-AT	15	1 ∅ 110	60	2	Cont.	0.75	0.075	3200	0.51	0.46	0.046	6.0 / 250
8IDD2(D)-15-A	8IDD2(D)-15-AT	15	1 ∅ 220	60	2	Cont.	0.58	0.058	3200	0.23	0.46	0.046	1.2 / 450
8IDDE-15-A	8IDDE-15-AT	15	1 ∅ 220	50	2	Cont.	0.58	0.058	2700	0.19	0.54	0.054	1.2 / 450
			1 ∅ 240				0.73	0.073		0.22	0.54	0.054	
8IDD3(G)-15-A	8IDD3(G)-15-AT	15	3 ∅ 220	50	2	Cont.	2.08	0.208	2800	0.13	0.52	0.052	-
				60			1.66	0.166	3300	0.13	0.44	0.044	
			3 ∅ 230	50	2	Cont.	2.24	0.224	2800	0.14	0.52	0.052	-
				60			1.81	0.181	3300	0.14	0.44	0.044	

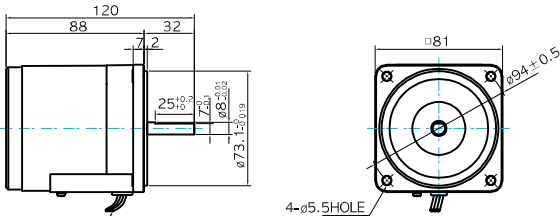
1) 모터 모델명 □ 안에는 전압코드가 들어갑니다.

2) 전압코드 A, D, E, G는 TP(Thermal Protector) 부착 사양입니다.

Dimensions

LEAD WIRE TYPE

- MOTOR MODEL: 8IDD□-15-A (NO FAN)



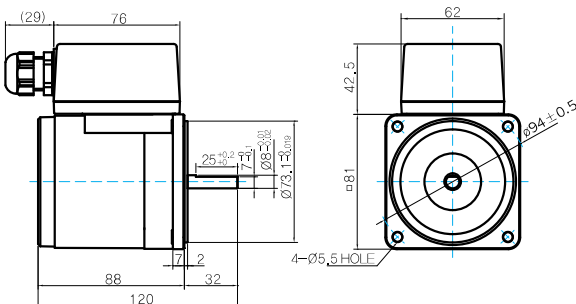
LEAD WIRE 300mm
UL STYLE NO.3271 AWG NO.20

MOTOR OUTPUT SHAFT

MODEL	SPEC
D-CUT TYPE	<p>Technical drawing of the motor output shaft. The shaft diameter is 8mm. The total length is 32mm. The distance from the motor body to the end of the shaft is 23mm. The shaft has a diameter of 8mm ± 0.01mm. The end of the shaft has a diameter of 7mm ± 0.1mm.</p>

TERMINAL BOX TYPE

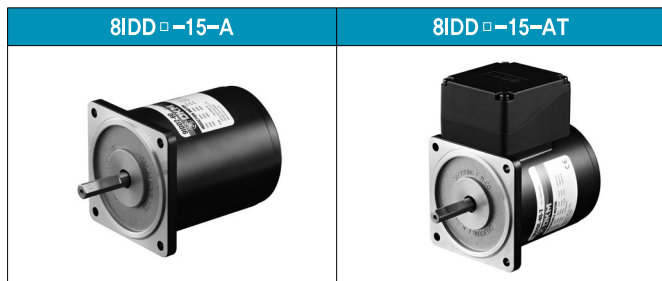
- MOTOR MODEL: 8IDD□-15-AT (NO FAN)



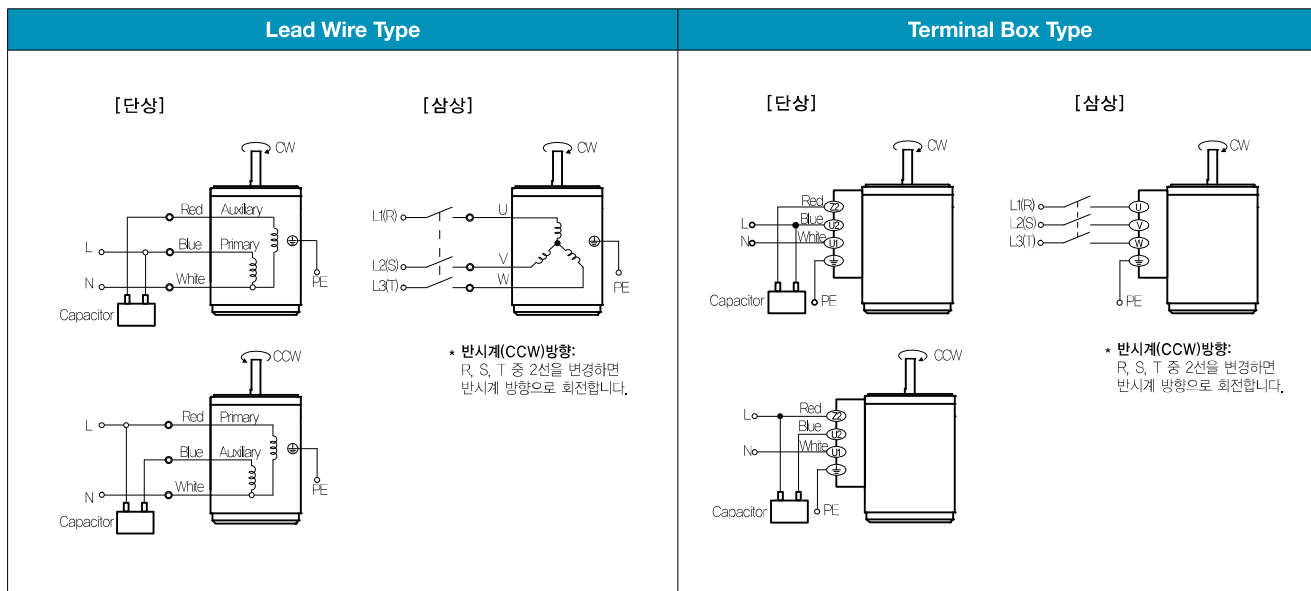
WEIGHT

PART	WEIGHT(Kg)
MOTOR	1.56

Motor Images



결선도



1) 회전방향은 모터 축 측에서 본 방향을 나타냅니다.

2) CW는 시계방향, CCW는 반시계방향입니다.

3) 단상 모터의 회전방향 전환은 모터 정지 후에 실시하여 주십시오. 모터 회전 중에 회전방향을 전환하면 방향이 전환되지 않거나 시간이 지체되어 전환되는 경우가 있습니다.