

B AC Motors

2 Pole Motor 15W(□ 80mm)

15W

2 Pole Motor
15W(□ 80mm)

Motor Specification

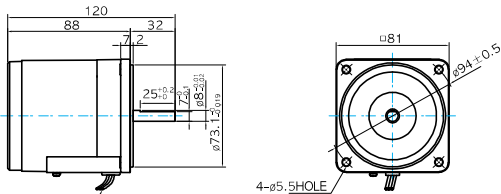
Model		Output	Voltage	Frequency	Poles	Duty	Starting Torque		Rated Load			Capacitor	
Lead Wire Type	Terminal Box Type								Speed	Current	Torque		
8IDD*–15–A(T): D–Cut Type Shaft		W	V	Hz			kgfcm	N.m	r/min	A	kgfcm	N.m	μF / VAC
8IDD1(A)–15–A	8IDD1(A)–15–AT	15	1 φ 110	60	2	Cont.	0.75	0.075	3200	0.51	0.46	0.046	6.0 / 250
8IDD2(D)–15–A	8IDD2(D)–15–AT	15	1 φ 220	60	2	Cont.	0.58	0.058	3200	0.23	0.46	0.046	1.2 / 450
8IDDE–15–A	8IDDE–15–AT	15	1 φ 220	50	2	Cont.	0.58	0.058	2700	0.19	0.54	0.054	1.2 / 450
			1 φ 240				0.73	0.073		0.22	0.54	0.054	
8IDD3(G)–15–A	8IDD3(G)–15–AT	15	3 φ 220	50	2	Cont.	2.08	0.208	2800	0.13	0.52	0.052	–
				60			1.66	0.166	3300	0.13	0.44	0.044	
			3 φ 230	50	2	Cont.	2.24	0.224	2800	0.14	0.52	0.052	–
				60			1.81	0.181	3300	0.14	0.44	0.044	

- 1) Enter the phase & voltage code in the place * within the motor model name. .
2) The phase & voltage code A, D, E, G contain a built-in thermal protector.

Dimensions

LEAD WIRE TYPE

- MOTOR MODEL: 8IDD□–15–A (NO FAN)



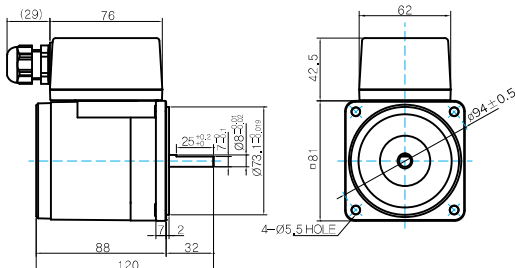
LEAD WIRE 300mm
UL STYLE NO.3271 AWG NO.20

MOTOR OUTPUT SHAFT

MODEL	SPEC
D-CUT TYPE	<p>Technical drawing of the motor output shaft. The shaft diameter is 8.0±0.05mm. The total length is 32mm, with 25.0±0.2mm to the motor body and 7.0±0.1mm to the end. The end diameter is 8.0±0.05mm.</p>

TERMINAL BOX TYPE

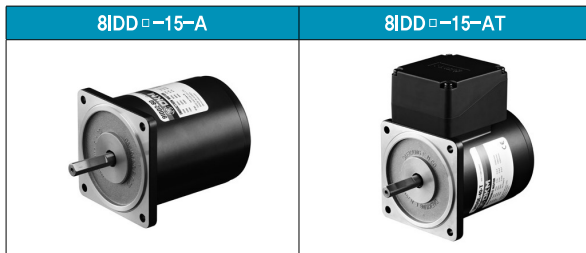
- MOTOR MODEL: 8IDD□–15–AT (NO FAN)



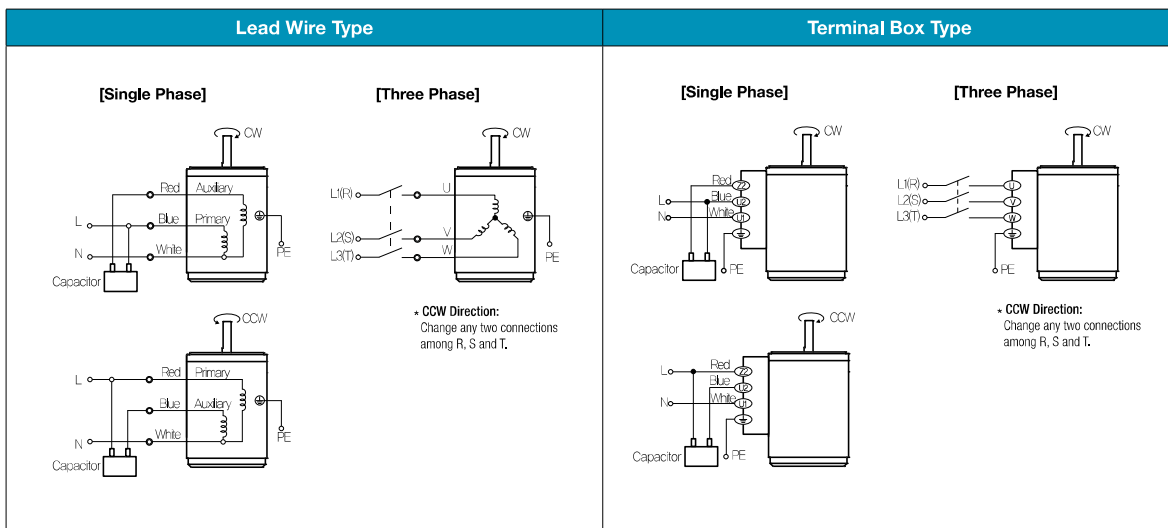
WEIGHT

PART	WEIGHT(Kg)
MOTOR	1.56

Motor Images



Connection Diagrams



- 1) The direction of motor rotation is as viewed from the shaft end of the motor.
- 2) CW represents the clockwise direction, while CCW represents the counterclockwise direction.
- 3) Change the direction of single phase motor rotation **only** after bringing the motor to a stop. If an attempt is made to change the direction of rotation while the motor is rotating, the motor may ignore the reversing command or change its direction after some delay.