

B AC Motors

Induction Motor 250W(□ 104mm)

250W Induction Motor 250W(□ 104mm)

Motor 사양

Model 10IDGE-250F□-T: Gear Type Shaft 10IDDE-250F-T: D-Cut Type Shaft 10IDKE-250F-T: Key Type Shaft	Output W	Voltage V	Frequency Hz	Poles	Duty	Starting Torque		Rated Load			Capacitor μF / VAC	
						kgfcm	N.m	Speed r/min	Current A	Torque kgfcm N.m		
Terminal Box Type												
10IDGE-250F□-T	250	1∅ 220 1∅ 240	50	4	Cont.	11.00 13.50	1,100 1,350	1250 1300	2.29 2.17	19.48 18.74	1,948 1,874	13.0/450

- 1) □ 안에는 부착되는 감속기의 모델 타입명이 들어갑니다.
- 2) 전압코드 T는 TP(Thermal Protector) 부착 사양입니다.
- 3) Gear Type Shaft는 감속기 부착용이며 D-Cut 및 Key Type Shaft는 모터 단독 사용시의 출력축입니다.

감속기 부착 시 최대허용토크

50Hz

Motor Model	Gearbox Model	감속비 r/min	3	5	9	10	15	20	25	30	40	50	60	90	100	120	150	180
			10IDGE-250FU-T	10UBK□BH	kgfcm N.m	50.0 4.90	80.0 7.84	145.0 14.21	150.0 14.70	220.0 21.56	270.0 26.46	335.0 32.83	400.0 39.20	400.0 39.20	400.0 39.20	400.0 39.20	400.0 39.20	400.0 39.20

Motor Model	Gearbox Model	감속비 r/min	5	7.5	10	15	20	25	30	40
			10IDKE-250F-T	10WHD□-040	kgfcm N.m	70.0 6.86	100.0 9.80	130.0 12.74	185.0 18.13	240.0 23.52

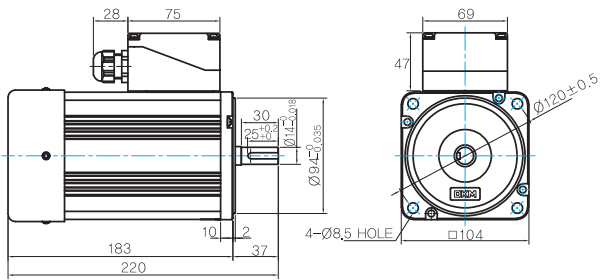
Motor Model	Gearbox Model	감속비 r/min	15	20	25	30	40	50	60	80	100	120	160	200	225	240
			10IDGE-250FHC-T	9HC□□	kgfcm N.m	213 20.9	284 27.8	356 34.9	427 41.8	569 55.8	711 69.7	853 83.6	1138 112	1422 139	1706 167	2275 223

- 1) 감속기 모델명 □ 안에는 감속비가 들어갑니다.
- 2) 위의 표에서 색칠된 범위의 감속비를 선택했을 때 감속기의 출력축은 모터의 출력축과 같은 방향으로 회전합니다. 흰색 바탕 범위의 감속비에서는 감속기 출력축은 모터 출력축의 회전방향과 반대방향으로 회전합니다.
- 4) 회전속도(r/min)는 모터의 동기회전속도(50Hz:1500r/min, 60Hz:1800r/min)를 감속비로 나누어 계산합니다. 실제 회전속도는 부하의 크기에 따라 표시보다 2~20% 정도 느립니다.

Dimensions

MOTOR ONLY

MOTOR MODEL:
10IDKE-250F-T



MOTOR OUTPUT SHAFT

MODEL	SPEC
D-CUT TYPE	
KEY TYPE	

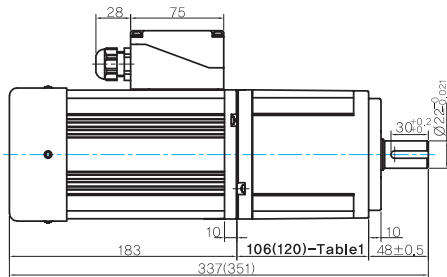
KEY SPEC

MOTOR

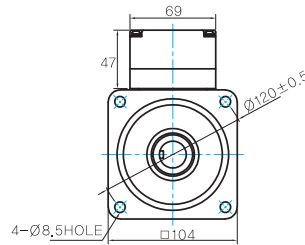
GEARED MOTOR

U TYPE GEARBOX

MOTOR MODEL:
10IDGE-250FU-T



GEARBOX MODEL:
10UBK□BH



GEARBOX OUTPUT SHAFT

MODEL	SPEC
KEY TYPE	

KEY SPEC

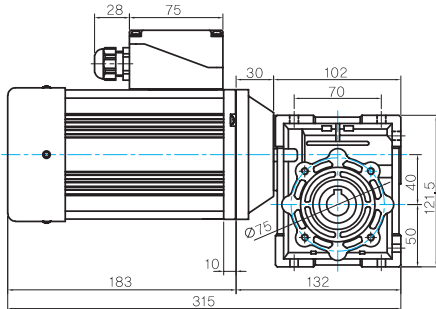
GEARBOX

106(120)-Table1

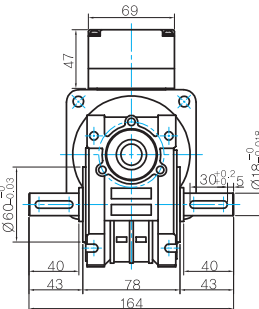
SIZE(mm)	GEAR RATIO
106	10UBK3BH - 10UBK60BH
120	10UBK90BH - 10UBK180BH

WH TYPE GEARBOX

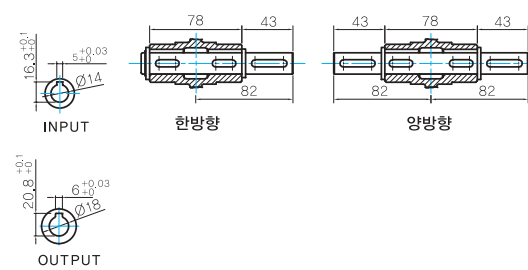
MOTOR MODEL:
10IDKE-250F-T



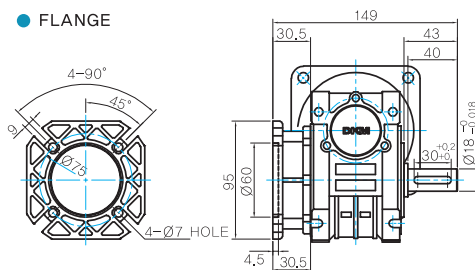
GEARBOX MODEL:
10WHD□-040



SHAFT



FLANGE



KEY SPEC

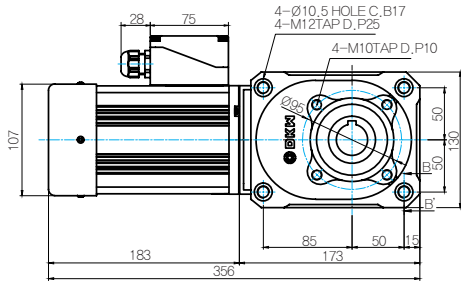
GEARBOX

B AC Motors

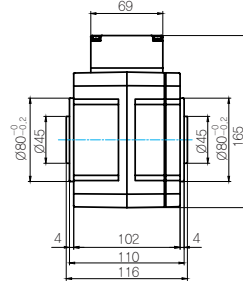
Induction Motor 250W(□ 104mm)

HC TYPE GEARBOX

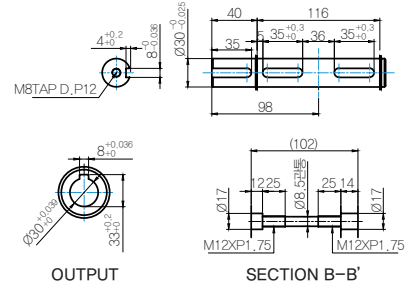
- GEARBOX MODEL : 10IDGE-250FHC-T (GENERAL FAN)



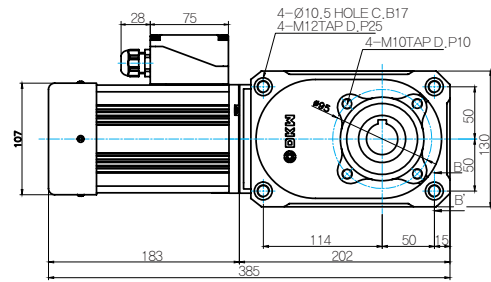
- GEARBOX MODEL : 10HC(15 ~ 60)□



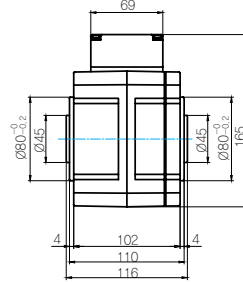
- SHAFT



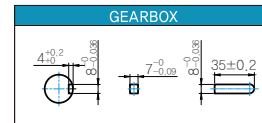
- GEARBOX MODEL : 10IDGE-250FHC-T (GENERAL FAN)



- GEARBOX MODEL : 10HC(80 ~ 240)□



- KEY SPEC

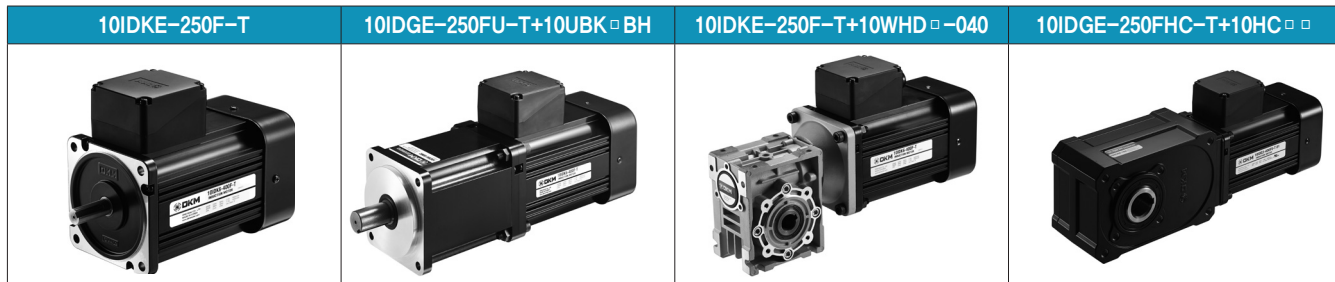


WEIGHT

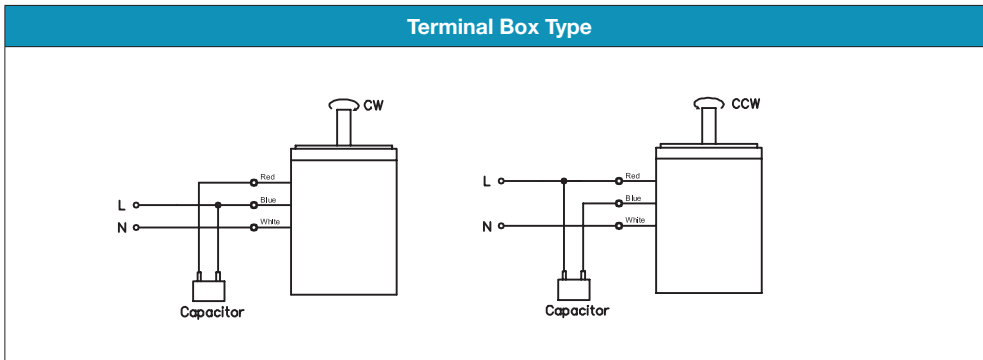
GEARBOX		WEIGHT(Kg)
MOTOR		6.1
GEAR BOX	10UBK3BH ~ 10UBK9BH	2.0
	10UBK10BH ~ 10UBK15BH	2.15
	10UBK20BH ~ 10UBK60BH	2.3
	10UBK90BH ~ 10UBK180BH	2.5
	10HC15□	5.5
	10HC20□~10HC60□	5.6
10HC80□~10HC240□	6.4	

* 출력 FLANGE와 SHAFT는 별매입니다.

Motor Images



Connection Diagrams



- 회전방향은 모터 축 쪽에서 본 방향을 나타냅니다.
- CW는 시계방향, CCW는 반시계방향입니다.