

Induction Motor 120W(□ 90mm)

120W Induction Motor 120W(□ 90mm)

Motor 사양

Model		Output W	Voltage V	Frequency Hz	Poles	Duty	Starting Torque		Rated Load			Capacitor μF / VAC		
9IDG*-120F(-T): Gear Type Shaft 9IDD*-120F(-T): D-Cut Type Shaft 9IDK*-120F(-T): Key Type Shaft	9IDG1(A)-120F□-T 9IDG2(D)-120F□ 9IDGE-120F□ 9IDG3(G)-120F□ 9IDG4(K)-120F□ 9IDG5(L)-120F□						kgfcm	N.m	Speed r/min	Current A	Torque kgfcm N.m			
Lead Wire Type	Terminal Box Type													
9IDG1(A)-120F□	9IDG1(A)-120F□-T	120	1φ 110	60	4	Cont.	6.50	0.650	1600	2.00	7.31	0.731	25.0 / 250	
9IDG2(D)-120F□	9IDG2(D)-120F□-T	120	1φ 220	60	4	Cont.	6.20	0.620	1600	1.04	7.31	0.731	6.0 / 450	
9IDGE-120F□	9IDGE-120F□-T	120	1φ 220	50	4	Cont.	6.40	0.640	1250	0.90	9.35	0.935	6.0 / 450	
			1φ 240				7.50	0.750		1.00	9.35	0.935		
			3φ 220				24.40	2.440		1300	0.88	8.99		0.899
9IDG3(G)-120F□	9IDG3(G)-120F□-T	120	3φ 220	50	4	Cont.	20.00	2.000	1600	0.71	7.31	0.731	-	
			3φ 230				27.00	2.700		1350	0.86	8.66		0.866
			3φ 240				21.70	2.170		1600	0.76	7.31		0.731
9IDG4(K)-120F□	9IDG4(K)-120F□-T	120	3φ 380	50	4	Cont.	24.30	2.430	1300	0.50	8.99	0.899	-	
			3φ 400				19.90	1.990		1600	0.41	7.31		0.731
			3φ 420				27.10	2.710		1350	0.49	8.66		0.866
9IDG5(L)-120F□	9IDG5(L)-120F□-T	120	3φ 415	50	4	Cont.	24.30	2.430	1300	0.47	8.99	0.899	-	
			3φ 430				19.90	1.990		1600	0.37	7.31		0.731
			3φ 440				27.50	2.750		1350	0.47	8.66		0.866
				60		4	22.20	2.220	1600	0.40	7.31	0.731		

- 1) 모터 모델명 * 안에는 전압코드가, □ 안에는 부착되는 감속기의 모델 타입명이 들어갑니다. 2) 전압코드 A, D, E, G, K는 TP(Thermal Protector) 부착 사양입니다.
- 3) Gear Type Shaft는 감속기 부착용이며 D-Cut Type Shaft는 모터 단독 사용시의 출력축입니다.
- 4) 상상 380V~440V 모터에서는 인버터 사용을 할 수 없습니다. 인버터 사용시 권선의 절연이 열화되어 모터가 파손될 수 있습니다.

감속기 부착 시 최대허용토크

60Hz

Motor Model	Gearbox Model	감속비	2	3	3.6	5	6	7.5	9	10	12.5	15	18	20	25	30	36	40	50	60	75	90	100	120	150	180	200	
9IDG*-120FP	9PBK□BH 9PFK□BH	kgfcm N.m	11.8 1.16	17.8 1.74	21.3 2.09	29.6 2.90	35.5 3.48	44.4 4.35	53.3 5.22	59.2 5.80	66.7 6.53	80.0 7.84	96.0 9.41	106.7 10.45	120.5 11.81	144.6 14.17	173.6 17.01	192.9 18.90	200.0 19.60	200.0 19.60	200.0 19.60	200.0 19.60	200.0 19.60	200.0 19.60	200.0 19.60	200.0 19.60	200.0 19.60	200.0 19.60
9IDG*-120FH	9HBK□BH 9HFK□BH	kgfcm N.m	-	17.8 1.74	21.3 2.09	29.6 2.90	35.5 3.48	44.4 4.35	53.3 5.22	59.2 5.80	66.7 6.53	80.0 7.84	96.0 9.41	106.7 10.45	120.5 11.81	144.6 14.17	173.6 17.01	192.9 18.90	200.0 19.60	200.0 19.60	200.0 19.60	200.0 19.60	200.0 19.60	200.0 19.60	200.0 19.60	200.0 19.60	200.0 19.60	200.0 19.60

Motor Model	Gearbox Model	감속비	10	12	15	18	25	30	36	50	60	Motor Model	Gearbox Model	감속비	5	7.5	10	15	20	25	30	40	50	60	80
9IDG*-120FW	9WD□BL/ BR/□BRL	kgfcm N.m	59.9 5.87	70.1 6.87	84.4 8.27	97.3 9.54	127.8 12.53	144.6 14.17	153.1 15.00	142.9 14.00	122.4 12.00	9IDG*-120FWH	9WHD□ -030	kgfcm N.m	25.4 2.49	36.8 3.61	47.3 4.64	66.6 6.53	84.2 8.25	96.4 9.45	112.2 11.00	137.9 13.52	157.8 15.46	163.3 16.00	132.7 13.00

Motor Model	Gearbox Model	감속비	15	20	25	30	40	50	60	80	100	120	160	200	225	240
9IDG*-120FHC	9HC□□	kgfcm N.m	80 7.84	107 10.5	133 13	160 15.7	213 20.9	267 26.2	320 31.4	427 41.8	533 52.2	640 62.7	853 83.6	1067 105	1200 118	1280 125

50Hz

Motor Model	Gearbox Model	감속비	2	3	3.6	5	6	7.5	9	10	12.5	15	18	20	25	30	36	40	50	60	75	90	100	120	150	180	200
9IDG*-120FP	9PBK□BH 9PFK□BH	kgfcm N.m	14.0 1.37	21.0 2.06	25.2 2.47	35.1 3.44	42.1 4.12	52.6 5.15	63.1 6.19	70.1 6.87	79.0 7.74	94.8 9.29	113.8 11.15	126.4 12.39	142.9 14.00	171.4 16.80	200.0 19.60	200.0 19.60	200.0 19.60	200.0 19.60	200.0 19.60	200.0 19.60	200.0 19.60	200.0 19.60	200.0 19.60	200.0 19.60	200.0 19.60
9IDG*-120FH	9HBK□BH 9HFK□BH	kgfcm N.m	-	21.0 2.06	25.2 2.47	35.1 3.44	42.1 4.12	52.6 5.15	63.1 6.19	70.1 6.87	79.0 7.74	94.8 9.29	113.8 11.15	126.4 12.39	142.9 14.00	171.4 16.80	205.7 20.16	228.6 22.40	285.7 28.00	300.0 29.40	300.0 29.40	300.0 29.40	300.0 29.40	300.0 29.40	300.0 29.40	300.0 29.40	300.0 29.40

Motor Model	Gearbox Model	감속비	10	12	15	18	25	30	36	50	60	Motor Model	Gearbox Model	감속비	5	7.5	10	15	20	25	30	40	50	60	80
9IDG*-120FW	9WD□BL/ BR/□BRL	kgfcm N.m	71.0 6.96	83.1 8.15	100.0 9.80	115.3 11.30	151.5 14.85	170.0 16.66	153.1 15.00	142.9 14.00	122.4 12.00	9IDG*-120FWH	9WHD□ -030	kgfcm N.m	30.1 2.95	43.6 4.28	56.1 5.50	79.0 7.74	99.7 9.77	114.3 11.20	133.0 13.03	163.5 16.02	173.5 17.00	163.3 16.00	132.7 13.00

Motor Model	Gearbox Model	감속비	15	20	25	30	40	50	60	80	100	120	160	200	225	240
9IDG*-120FHC	9HC□□	kgfcm N.m	94.8 9.29	126 12.3	158 15.5	190 18.6	253 24.8	316 31	379 37.1	506 49.6	632 61.9	758 74.3	1011 99.1	1264 124	1422 139	1517 149

- 1) 모터 모델명 * 자리에는 전압코드가 들어갑니다. 2) 감속기 모델명 □ 안에는 감속비가 들어갑니다. 3) 위의 표에서 색칠된 범위의 감속비를 선택했을 때 감속기의 출력축은 모터의 출력축과 같은 방향으로 회전합니다. 흰색 바탕 범위의 감속비에서는 감속기 출력축은 모터 출력축의 회전방향과 반대방향으로 회전합니다.
- 4) 회전속도(r/min)는 모터의 동기회전속도(50Hz:1500r/min, 60Hz:1800r/min)를 감속비로 나누어 계산합니다. 실제 회전속도는 부하의 크기에 따라 표시보다 2~20% 정도 느립니다.

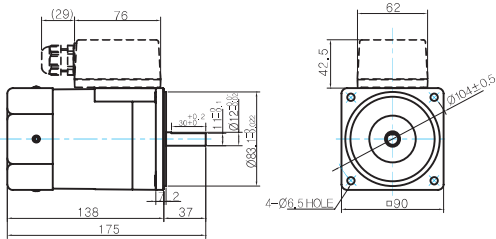
B AC Motors

Induction Motor 120W (□ 90mm)

Dimensions

MOTOR ONLY

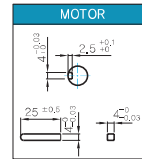
- MOTOR MODEL: 9IDD□-120F(-T) (GENERAL FAN)



MOTOR OUTPUT SHAFT

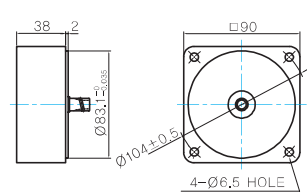
MODEL	SPEC
D-CUT TYPE	
9IDD□-120F	
KEY TYPE	
9IDK□-120F	

KEY SPEC



중간감속기

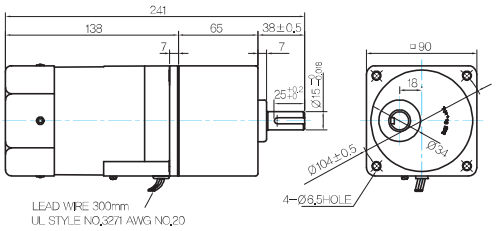
- MODEL: 9XD10□□



GEARED MOTOR

P TYPE GEARBOX

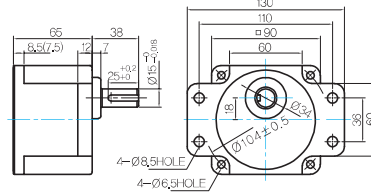
- MOTOR MODEL: 9IDG□-120FP (GENERAL FAN)



LEAD WIRE 300mm
UL STYLE NO.3271 AWG NO.20

- GEARBOX MODEL: 9PBK□BH

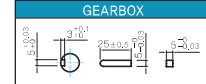
- GEARBOX MODEL: 9PFK□BH



GEARBOX OUTPUT SHAFT

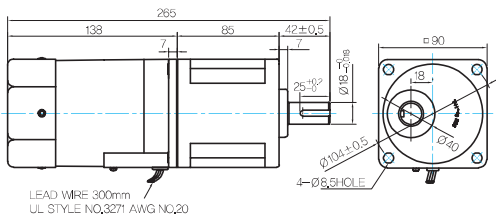
MODEL	SPEC
KEY TYPE	
9PBK□BH	
9PFK□BH	

KEY SPEC



H TYPE GEARBOX

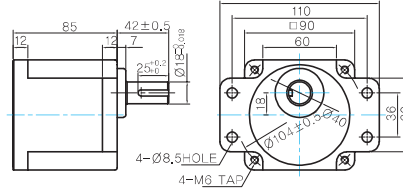
- MOTOR MODEL: 9IDG□-120FH (GENERAL FAN)



LEAD WIRE 300mm
UL STYLE NO.3271 AWG NO.20

- GEARBOX MODEL: 9HBK□BH

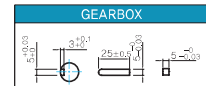
- GEARBOX MODEL: 9HFK□BH



GEARBOX OUTPUT SHAFT

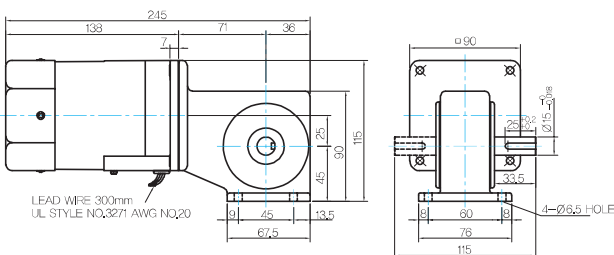
MODEL	SPEC
KEY TYPE	
9HBK□BH	
9HFK□BH	

KEY SPEC



W TYPE GEARBOX

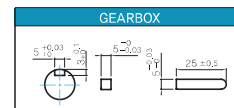
- MOTOR MODEL: 9IDG□-120FW (GENERAL FAN)



LEAD WIRE 300mm
UL STYLE NO.3271 AWG NO.20

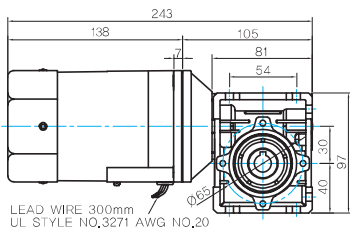
- GEARBOX MODEL: 9WD□BL/BR/BRL

KEY SPEC

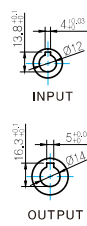
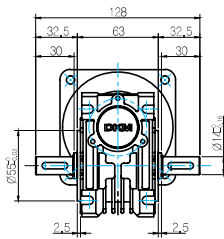


WH TYPE GEARBOX

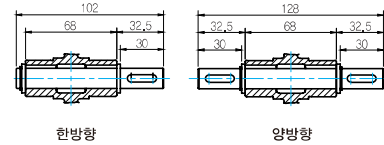
● MOTOR MODEL :
9IDG□-120FWH (GENERAL FAN)



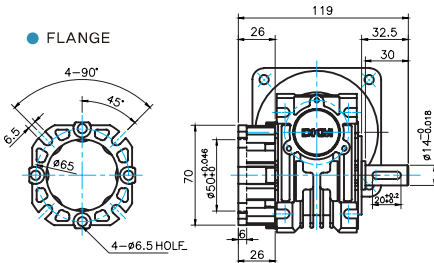
● GEARBOX MODEL :
9WHD□-030



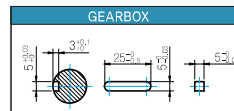
● SHAFT



● FLANGE

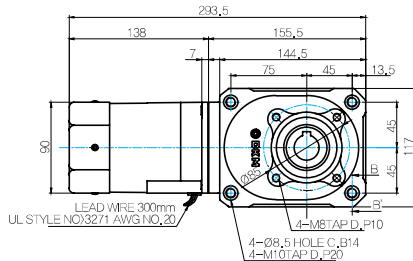


● KEY SPEC

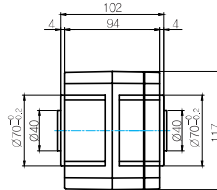


HC TYPE GEARBOX

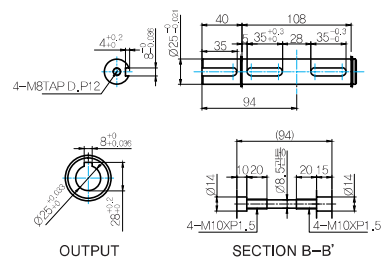
● MOTOR MODEL :
9IDG□-120FHC (GENERAL FAN)



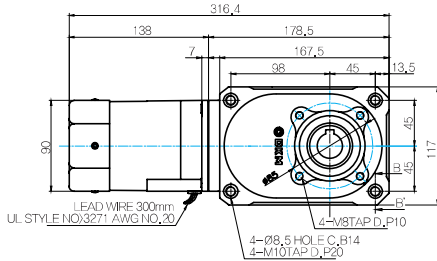
● GEARBOX MODEL :
9HC(15 ~ 60)□



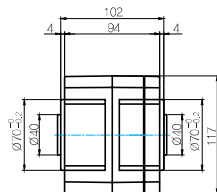
● SHAFT



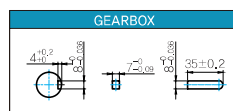
● MOTOR MODEL :
9IDG□-120FHC (GENERAL FAN)



● GEARBOX MODEL :
9HC(80 ~ 240)□



● KEY SPEC



● WEIGHT

	PART	WEIGHT(Kg)
GEAR BOX	MOTOR	3,05
	9PB(F)K2BH - 9PB(F)K10BH	1,28
	9PB(F)K12.5BH - 9PB(F)K20BH	1,3
	9PB(F)K25BH - 9PB(F)K60BH	1,45
	9PB(F)K75BH - 9PB(F)K200BH	1,47
	9HB(F)K3BH - 9HB(F)K10BH	1,62
	9HB(F)K12.5BH - 9HB(F)K20BH	1,68
	9HB(F)K25BH - 9HB(F)K60BH	1,73
	9HB(F)K75BH - 9HB(F)K200BH	1,78
	9WD□BL/BR/BRL	1,0
9WHD□-030	1,2	
9HC15□	4,05	
9HC20□~9HC60□	4,1	
9HC80□~9HC240□	4,75	
9XD10□	0,6	

* 플랜지 FLANGE와 SHAFT는 별매입니다.

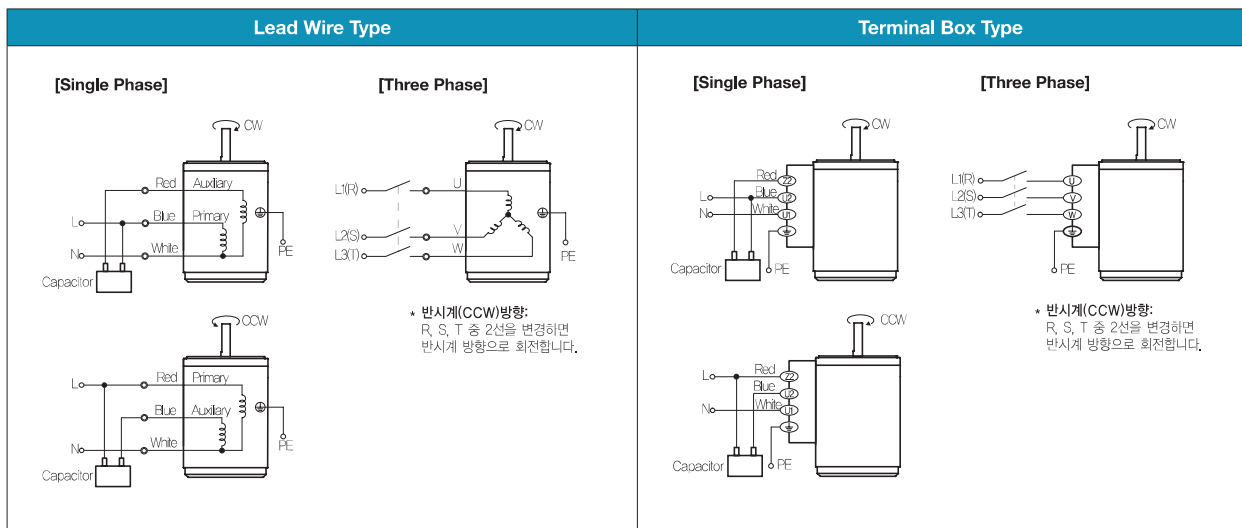
B AC Motors

Induction Motor 120W(□ 90mm)

Motor Images

9IDD□-120F	9IDD□-120F-T	9IDG□-120FP+9PBK□BH	9IDG□-120FP+9PFK□BH
			
9IDG□-120FH+9HBK□BH	9IDG□-120FH+9HFK□BH	9IDG□-120FW+9WD□BL	9IDG□-120FWH+9WHD□-030
			
9IDG□-120FHC+9HC□□			
			

결선도



- 회전방향은 모터 축 측에서 본 방향을 나타냅니다.
- CW는 시계방향, CCW는 반시계방향입니다.
- 단상 모터의 회전방향 전환은 모터 정지 후에 실시하여 주십시오. 모터 회전 중에 회전방향을 전환하면 방향이 전환되지 않거나 시간이 지체되어 전환되는 경우가 있습니다.