

# C DC Motors

## DC Motor 120W(□90mm)

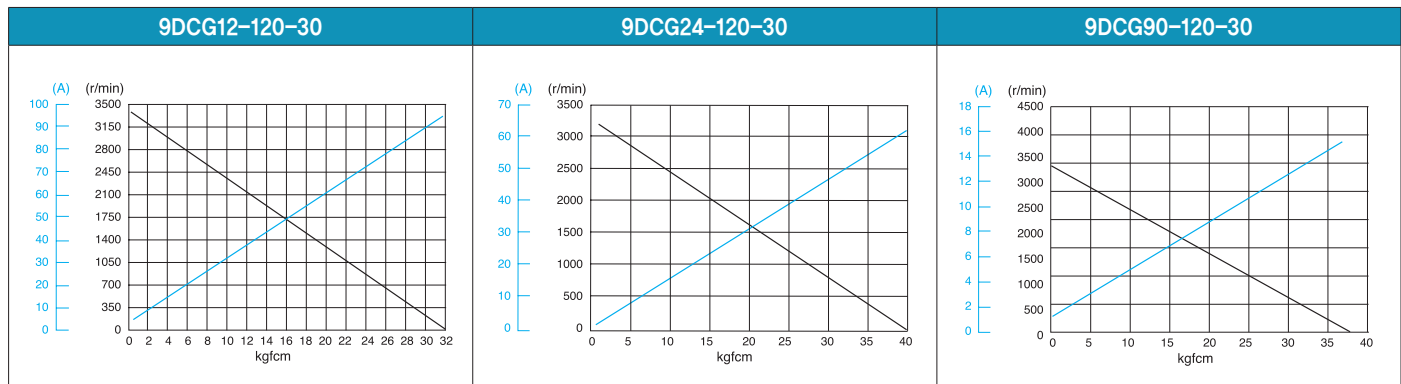
# 120W DC Motor 120W(□90mm)

### Motor 사양

Model 9DCP(W)*-120-30: Gear Type Shaft 9DCD*-120-30: D-Cut Type Shaft 9DCK*-120-30: Key Type Shaft	Output W	Voltage V	No Load		Starting Torque		Starting Current A	Rated Load			
			Speed r/min	Current A	kgfcm	N.m		Speed r/min	Current A	Torque kgfcm N.m	
9DC□12-120-30	120	12	3400	3.50	25.00	2.500	75.00	3000	15.00	3.90	0.390
9DC□24-120-30	120	24	3050	1.30	34.00	3.400	62.00	2800	7.20	3.90	0.390
9DC□90-120-30	120	90	3400	0.50	34.00	3.400	18.00	3000	2.00	3.90	0.390

- 1) 모터 모델명 \* 자리에는 전압코드가, □ 안에는 부착되는 감속기 모델 타입명이 들어갑니다.
- 2) Gear Type Shaft는 감속기 부착용이며 D-Cut Type Shaft는 모터 단독 사용시의 출력축입니다.

### Performance Curve



### 감속기 부착 시 최대허용토크

Motor Model	Gearbox Model	감속비 r/min	2	3	3.6	5	6	7.5	9	10	12.5	15	18	20
			9DCP*-120-30	9PBK□BH 9PFK□BH	kgfcm N.m	6.3 0.62	9.5 0.93	11.4 1.11	15.8 1.55	19.0 1.86	23.7 2.32	28.4 2.79	31.6 3.10	35.6 3.49

Motor Model	Gearbox Model	감속비 r/min	25	30	36	40	50	60	75	90	100	120	150	180	200
			9DCP*-120-30	9PBK□BH 9PFK□BH	kgfcm N.m	64.4 6.31	77.2 7.57	92.7 9.08	103.0 10.09	128.7 12.61	154.4 15.14	172.6 16.91	200.0 19.60	200.0 19.60	200.0 19.60

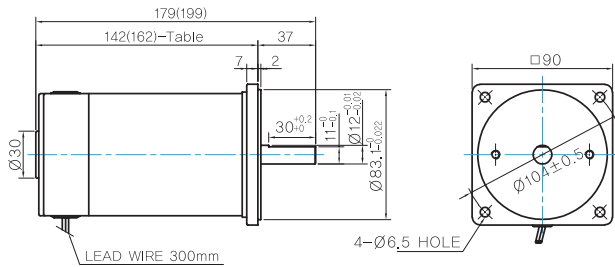
Motor Model	Gearbox Model	감속비 r/min	10	12	15	18	25	30	36	50	60
			9DCW*-120-30	9WD□BL/□BR/□BRL	kgfcm N.m	32.0 3.13	37.4 3.67	45.0 4.41	51.9 5.09	68.3 6.69	77.2 7.57

- 1) 모터 모델명 \* 자리에는 전압코드가 들어갑니다.
- 2) 감속기 모델명 □ 안에는 감속비가 들어갑니다.
- 3) 위의 표에서 색칠된 범위의 감속비를 선택했을 때 감속기의 출력축은 모터의 출력축과 같은 방향으로 회전합니다. 흰색 바탕 범위의 감속비에서는 감속기 출력축은 모터 출력축의 회전방향과 반대방향으로 회전합니다.
- 4) 회전속도(r/min)는 모터의 동기회전속도(50Hz:1500r/min, 60Hz:1800r/min)를 감속비로 나누어 계산합니다. 실제 회전속도는 부하의 크기에 따라 표시보다 2~20% 정도 느립니다.

## Dimensions

### MOTOR ONLY

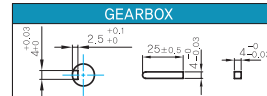
- MOTOR MODEL: 9DCD□-120-30



### MOTOR OUTPUT SHAFT

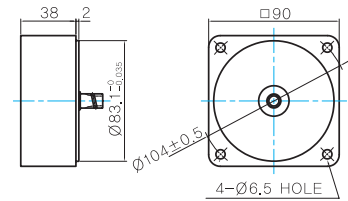
MODEL	SPEC
D-CUT TYPE	
9DCD□-120-30	
KEY TYPE	
9DCK□-120-30	

### KEY SPEC



### 중간감속기

- MODEL: 9XD10□□



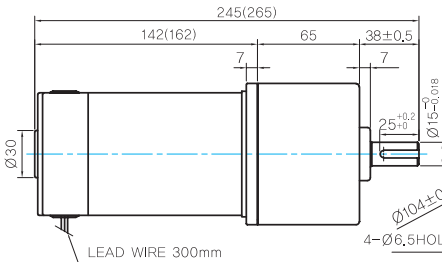
### 142(162)-Table1

SIZE(mm)	MOTOR VOLTAGE
142	24V,90V
162	12V

## GEARED MOTOR

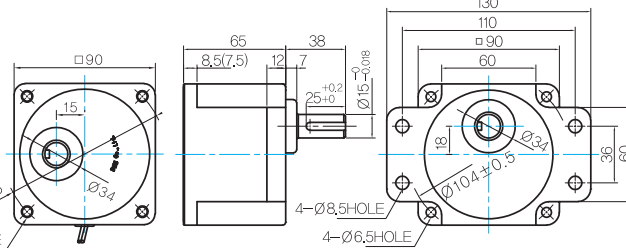
### P TYPE GEARBOX

- MOTOR MODEL: 9DCP□-120-30



- GEARBOX MODEL: 9PBK□BH

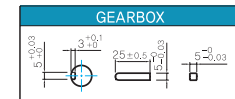
- GEARBOX MODEL: 9PFK□BH



### GEARBOX OUTPUT SHAFT

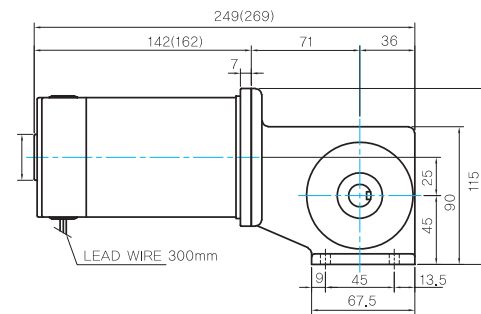
MODEL	SPEC
KEY TYPE	
9PBK□BH	
9PFK□BH	

### KEY SPEC



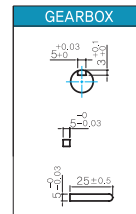
### W TYPE GEARBOX

- MOTOR MODEL: 9DCW□-120-30



- GEARBOX MODEL: 9WD□BL/BR/BRL

### KEY SPEC



### WEIGHT

PART	WEIGHT(Kg)	
MOTOR	2,1	
GEAR BOX	9PB(F)K2BH ~ 9PB(F)K10BH	1,28
	9PB(F)K12.5BH ~ 9PB(F)K20BH	1,3
	9PB(F)K25BH ~ 9PB(F)K60BH	1,45
	9PB(F)K75BH ~ 9PB(F)K200BH	1,47
	9WD□BL/BR/BRL	1,0
9XD10□□	0,6	

## Motor Images

