

C DC Motors

DC Motor 90W(□90mm)

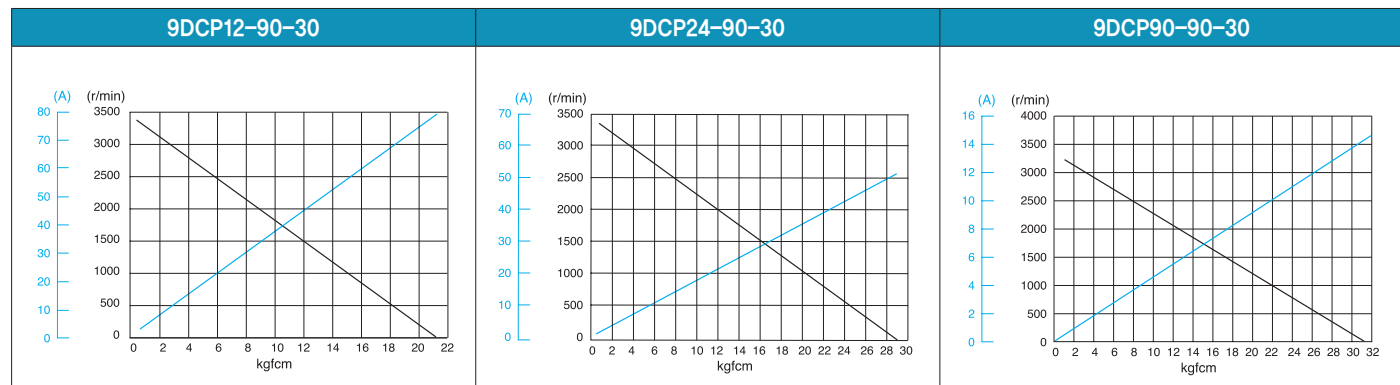
90W DC Motor 90W(□90mm)

Motor 사양

Model 9DCP(W)*-90-30: Gear Type Shaft 9DCD*-90-30: D-Cut Type Shaft 9DCK*-90-30: Key Type Shaft	Output W	Voltage V	No Load		Starting Torque		Starting Current A	Rated Load			
			Speed r/min	Current A	kgfcm	N.m		Speed r/min	Current A	Torque kgfcm N.m	
9DC□12-90-30	90	12	3400	3.50	21.00	2.100	67.00	3000	11.00	2.92	0.292
9DC□24-90-30	90	24	3050	1.10	25.50	2.550	33.00	2700	5.00	2.92	0.292
9DC□90-90-30	90	90	3200	0.30	31.90	3.190	14.50	3000	1.50	2.92	0.292

- 1) 모터 모델명 * 자리에는 전압코드가, □ 안에는 부착되는 감속기 모델 타입명이 들어갑니다.
- 2) Gear Type Shaft는 감속기 부착용이며 D-Cut Type Shaft는 모터 단독 사용시의 출력축입니다.

Performance Curve



감속기 부착 시 최대허용토크

Motor Model	Gearbox Model	감속비 r/min	2	3	3.6	5	6	7.5	9	10	12.5	15	18	20
			9DCP*-90-30	9PBK□BH 9PFK□BH	kgfcm N.m	4.7 0.46	7.1 0.70	8.5 0.83	11.8 1.16	14.2 1.39	17.7 1.74	21.3 2.09	23.7 2.32	26.6 2.61

Motor Model	Gearbox Model	감속비 r/min	25	30	36	40	50	60	75	90	100	120	150	180	200
			9DCP*-90-30	9PBK□BH 9PFK□BH	kgfcm N.m	48.2 4.72	57.8 5.67	69.4 6.80	77.1 7.55	96.4 9.44	115.6 11.33	129.2 12.66	155.1 15.20	172.3 16.88	200.0 19.60

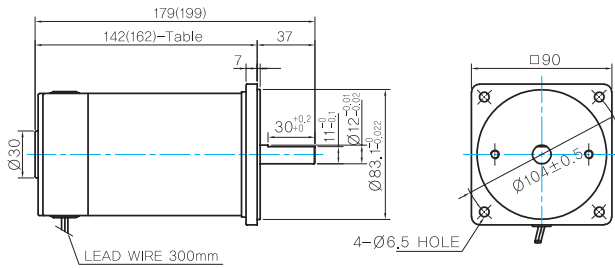
Motor Model	Gearbox Model	감속비 r/min	10	12	15	18	25	30	36	50	60
			9DCW*-90-30	9WD□BL/□BR/□BRL	kgfcm N.m	23.9 2.35	28.0 2.75	33.7 3.31	38.9 3.81	51.1 5.01	57.8 5.67

- 1) 모터 모델명 * 자리에는 전압코드가 들어갑니다.
- 2) 감속기 모델명 □ 안에는 감속비가 들어갑니다.
- 3) 위의 표에서 색칠된 범위의 감속비를 선택했을 때 감속기의 출력축은 모터의 출력축과 같은 방향으로 회전합니다. 흰색 바탕 범위의 감속비에서는 감속기 출력축은 모터 출력축의 회전방향과 반대방향으로 회전합니다.
- 4) 회전속도(r/min)는 모터의 동기회전속도(50Hz:1500r/min, 60Hz:1800r/min)를 감속비로 나누어 계산합니다. 실제 회전속도는 부하의 크기에 따라 표시보다 2~20% 정도 느립니다.

Dimensions

MOTOR ONLY

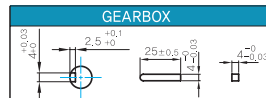
- MOTOR MODEL: 9DCD□-90-30



MOTOR OUTPUT SHAFT

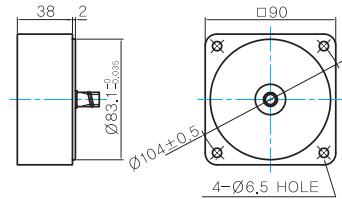
MODEL	SPEC
D-CUT TYPE	
9DCD□-90-30	
KEY TYPE	
9DCK□-90-30	

KEY SPEC



중간감속기

- MODEL: 9XD10□□



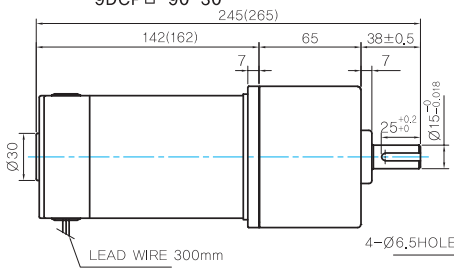
142(162)-Tablet

SIZE(mm)	MOTOR VOLTAGE
142	24V,90V
162	12V

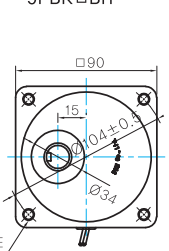
GEARED MOTOR

P TYPE GEARBOX

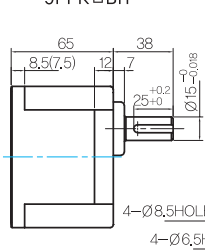
- MOTOR MODEL: 9DCP□-90-30



- GEARBOX MODEL: 9PBK□BH



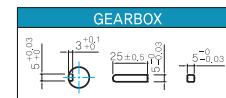
- GEARBOX MODEL: 9PFK□BH



GEARBOX OUTPUT SHAFT

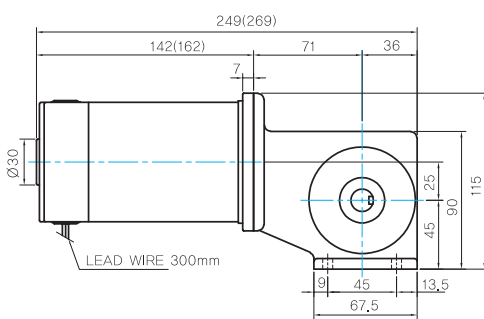
MODEL	SPEC
KEY TYPE	
9PBK□BH	
9PFK□BH	

KEY SPEC

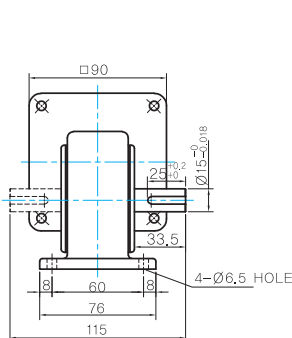


W TYPE GEARBOX

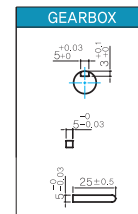
- MOTOR MODEL: 9DCW□-90-30



- GEARBOX MODEL: 9WD□BL/BR/BRL



KEY SPEC



WEIGHT

PART	WEIGHT(Kg)	
MOTOR	2.1	
GEAR BOX	9PB(F)K2BH ~ 9PB(F)K10BH	1.28
	9PB(F)K12.5BH ~ 9PB(F)K20BH	1.3
	9PB(F)K25BH ~ 9PB(F)K60BH	1.45
	9PB(F)K75BH ~ 9PB(F)K200BH	1.47
	9WD□BL/BR/BRL	1.0
9XD10□□	0.6	

Motor Images

